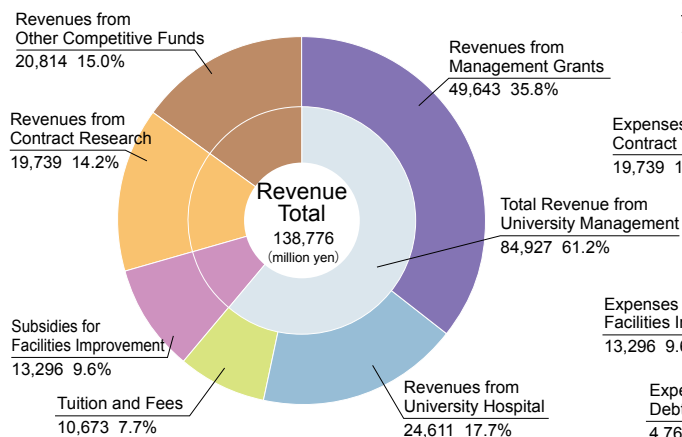
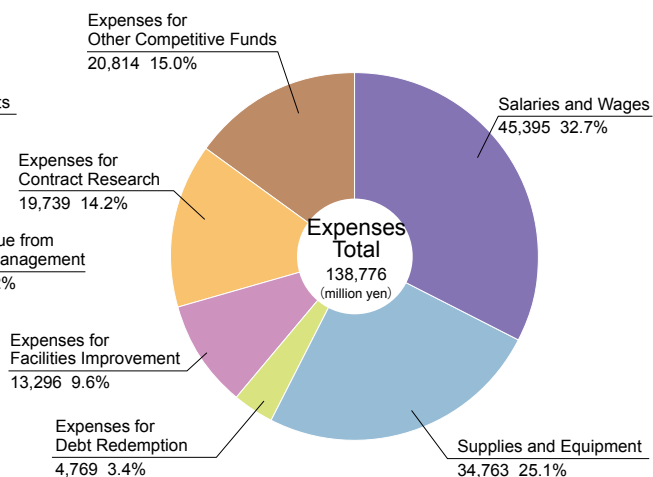


FY2009 Financial Summary

Revenue FY2009



Expenditure FY2009

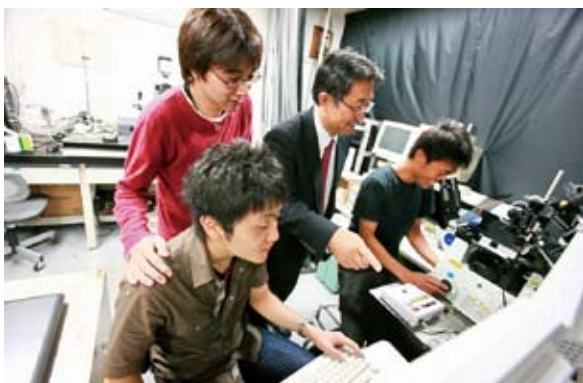


Research Funds

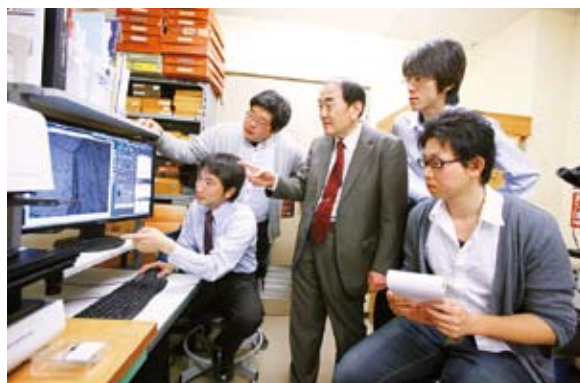
Grants-in-Aid for Scientific Research

(FY2009)

Categories	Number of Projects	Amount of Grants (thousand yen)		
		Direct Expenses	Indirect Expenses	Total
Specially Promoted Research	12	939,800	281,940	1,221,740
Scientific Research in Priority Areas	138	1,036,900	—	1,036,900
New Academic Field Research	48	460,700	138,210	598,910
Scientific Research (S) or (A) or (B) or (C)	902	4,005,000	1,201,500	5,206,500
Challenging Exploratory Research	199	285,100	—	285,100
Young Scientists (S) or (A) or (B)	604	1,211,690	363,507	1,575,197
Encouragement of Scientists	10	5,280	—	5,280
Publication of Scientific Research Results (Scientific Literature and Databases)	7	13,100	—	13,100
JSPS Fellows	340	267,300	—	267,300
Creative Scientific Research	5	304,300	91,290	395,590
Total	2,265	8,529,170	2,076,447	10,605,617



Biomechanical Engineering (Prof. Masaaki Sato)



Department of Archaeology (Prof. Kaoru Akoshima)

Research Funds

(FY2009)

Donations and Commissioned Research

Categories		Number of Recipients	Amount Received (thousand yen)
Donations		2,925	4,240,892
Funds for Commissioned Research	Joint Research with Industry	837	2,691,876
	General Funds	369	3,651,809
	Commissioned Research	242	5,910,956
	Competitive Funds	611	9,562,765
	Sub Total	1,448	12,254,641
Academic Consulting		144	100,124
Total		4,517	16,595,657

(FY2009)

Other Grants

Categories	Number of Projects	Amount of Funds (thousand yen)		
		Direct Expenses	Indirect Expenses	Total
Special Coordination Funds for Promoting Science and Technology	8	625,214	172,563	797,777
Global COE Program (MEXT)	12	2,580,530	774,159	3,354,689
Industrial Technology Research and Development Projects (NEDO)	9	132,700	39,810	172,510
Health and Labour Sciences Research Grant (MHLW)	40	1,561,120	412,555	1,973,675
Grant-in-Aid for Waste Management (MOE)	3	42,446	12,734	55,180
Subsidy for Promoting University Reform (MEXT)	7	349,433	0	349,433
Grant-in-Aid for Cancer Research (MHLW)	1	12,800	0	12,800
Grant-in-Aid for Research Base Formation, etc. (except for 21st Century COE Program and Global COE Program)	5	113,350	9,712	123,062
Grant for Promotional Expenses for Shared Research and Development Facilities (MEXT)	1	16,460	0	16,460
Grant for World Premier International Research Center (WPI) Initiative (MEXT)	1	1,038,462	311,538	1,350,000
Grant for Practical Application of University R&D Results under the Matching Fund Method (NEDO)	1	9,228	2,769	11,997
Project for the Improvement of Facilities for the Advanced Medical Care Development Zone (MEXT, MHLW, METI)	4	618,269	0	618,269
Grant for Improving Facilities for Industrial Technology Research and Development (METI)	1	564,606	0	564,606
Grant for Prevention of Disease Operation etc Fund	2	39,920	0	39,920
Total	95	7,704,538	1,735,840	9,440,378

Notes:

JST: Japan Science and Technology Agency

NEDO: New Energy and Industrial Technology Development Organization

MHLW: Ministry of Health, Labour and Welfare

MOE: Ministry of the Environment

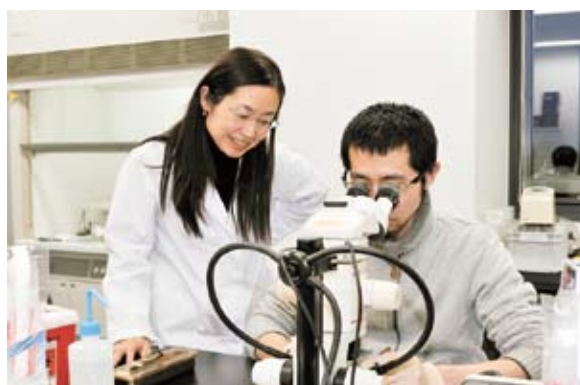
MEXT: Ministry of Education, Culture, Sports, Science and Technology

METI: Ministry of Economy, Trade and Industry

MLIT: Ministry of Land, Infrastructure and Transport



Nanoscientific Materials in Atomic Control (Laboratory in World Premier Institute
Research Center: Advanced Institute for Materials Science)



GCOE Program "Basic & Translational Research Center for Global Brain Science"
(Prof. Noriko Osumi: left)