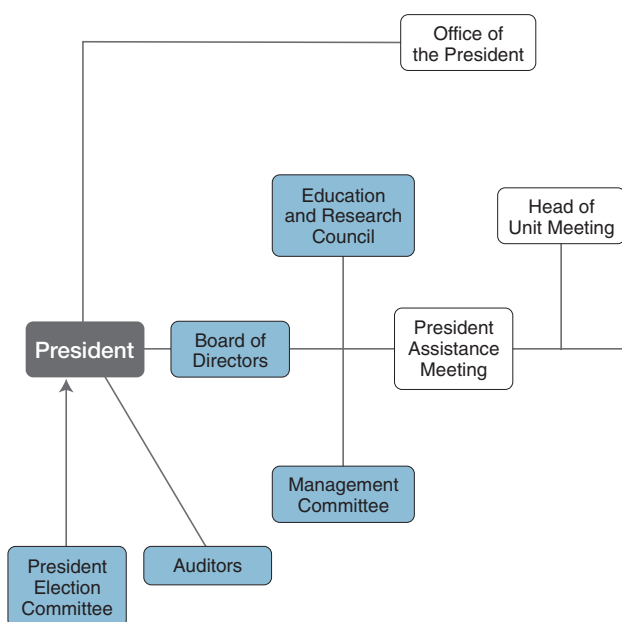


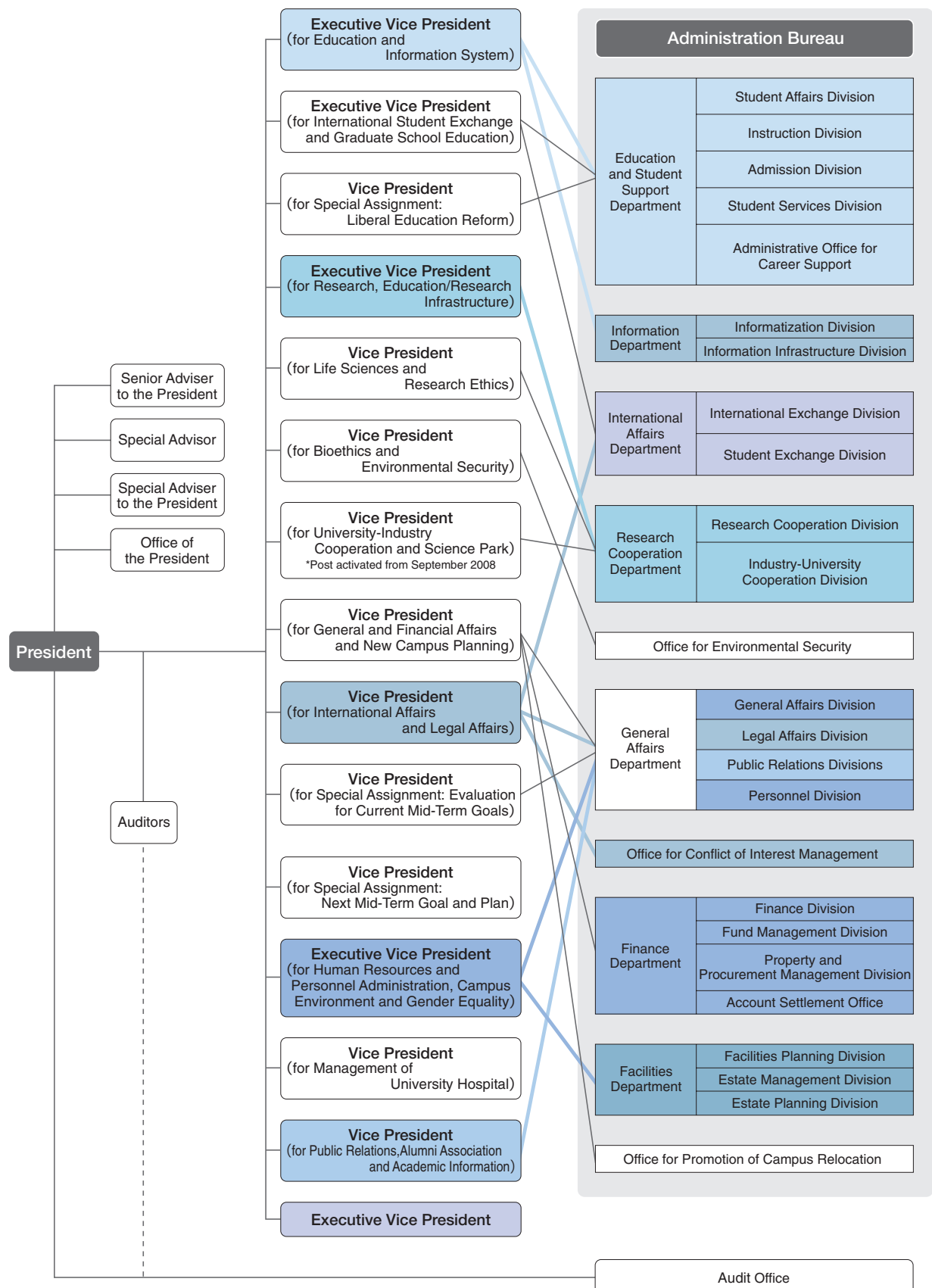
University Governance and Academic Units



	Administration Bureau
	University Library
	University Hospital
Faculties (10)	Arts and Letters
	Education
	Law
	Economics
	Science
	Medicine
	Dentistry
	Pharmacy and Pharmaceutical Sciences
	Engineering
	Agriculture
Graduate Schools (16)	Arts and Letters
	Education
	Law
	Economics and Management
	Science
	Medicine
	Dentistry
	Pharmaceutical Sciences
	Engineering
	Agricultural Science
	International Cultural Studies
	Information Sciences
	Life Sciences
	Environmental Studies
	Biomedical Engineering
	Educational Informatics Research Division, Education Division
Professional Graduate Schools (3)	Law School
	School of Public Policy
	Accounting School
Research Institutes (5)	Institute for Materials Research
	Institute of Development, Aging and Cancer
	Institute of Fluid Science
	Research Institute of Electrical Communication
	Institute of Multidisciplinary Research for Advanced Materials
	Inter-Department Institutes for Education and Research (9)
	University Collaborating Institutions (9)

(as of April 1, 2008)

Administration



Organization Chart

(as of April 1, 2008)

National University Corporation Tohoku University

