

Tohoku University Fact Book 2006

東北大学概要 2006



TOHOKU
UNIVERSITY

CREATIVITY



CONTENTS

<Introduction>

Historical Background	01
Mission Statement and Towards Tohoku University 2016	02
Message from the President	03
Principles of Strategy for International Exchange	04
Tohoku University Official Logo	04
Presidents of Tohoku University	05
The 100 th Anniversary Projects	06
Chronological Chart	07
Prize Winners	09
University Awards	12

<Organization>

Organizational Charts	15
Administrative Staff	18
President Election Committee	20
Board of Directors	20
Management Committee	20
Education and Research Council	21
University Personnel	22
Undergraduate Schools	23
Graduate Schools	23
Research Institutes	24
Inter-Department Institutes for Education and Research	24
University Collaborating Institutions	25
Biomedical Engineering Research Organization	25
University Library	26
University Hospital	27

<Students>

Number of Students	29
Result of Entrance Examination	30
Number of Degrees Conferred	31
After Graduation Status	32

<Finance>

Summary of Financial Statements of FY2005	35
Research Funds	36
Land and Buildings	37

<Major Research Projects>

Research Programs	39
Education Programs	42
Endowed Chairs and Research Divisions	43
Cooperation with Industry	44
Cooperation with Community	45
Citations	45

<International Exchange>

Agreements on Academic Exchange with Foreign Institutions	47
Academic Exchange	53
Number of International Students	55
Statistics on Personnel Exchange	57
Overseas Office	57
International Symposium	58
Activities for International Exchange	58
Students Exchange Programs	59

<Campuses>

Sendai City	61
Location of the Campuses in Sendai City	62
International House	64
Campus Map	65

Historical Background

Tohoku University was founded in 1907 as the third Imperial University of Japan, following the Tokyo Imperial University and Kyoto Imperial University; and from its start, it displayed to the world an unwavering commitment of an “Open-Door” policy. Departing from the norms of other imperial universities, it has accepted graduates from higher technical schools and higher normal schools, and despite the opposition from the government at that time, becoming Japan’s First National University to admit female students in 1913 (admitting three in that year).

At the time of its founding, Tohoku University was able to attract a group of young and brilliant researchers who had trained around the world to serve on its faculty. As part of this reason, a “Research First” principle came to develop, which calls upon their scholars to not only pursue highly productive research but to also put their findings to work in the teaching of their students. In addition to this, Tohoku University has nurtured a tradition of “Practice-Oriented Research and Education,” in which their results of cutting-edge research are being put to use for the good of society and the improvement of life style. Evident of our pioneering practice (before the World War II period), are the set up in local venture businesses which foster regional industry and our status as the nation’s center for research on family law; the domestic branch of law which is closely associated with our daily lives.

This spirit, which continued strongly through World War II and the rapid economic growth of the postwar period, still remains alive and can be seen in today’s new era of advanced globalization. As Tohoku University prepares to celebrate its centennial in 2007, we are confident that our traditions be nourished and that with the help of students and researchers from all over the world, it will not only survive but will flourish even more during the coming 100 years.

■ Mission Statement

Tohoku University is committed to the “Research First” principle and “Open-Door” policy since its foundation, and is internationally recognized for its outstanding standards in education and research. The university contributes to world peace and equity by devoting itself to research useful in the solutions of societal problems and for the education of human resources in the capacities of leadership.

■ Towards Tohoku University 2016

In order to fulfill this mission, Tohoku University will carry out the following objectives within the following 10 years.

Establish an internationally recognized university and research center

- Consistently produce top research in a broad spectrum of fields, including the natural sciences, humanities and social sciences.
- Create cutting edge research institutions and other forums capable of responding to the rapid dissemination of knowledge and a knowledge-based society.
- Establish the presence and reputation as an international locus in general research by maintaining intimate relationships with major national and international research networks.

Nurture human resources capable of leadership contributing to the knowledge and advancement of society

- The faculty’s cutting edge research will be reflected in their teaching.
- Content and pedagogy of all courses will be that of a top level educational institution.
- Establish an educational foundation which enables students to explore new avenues of human knowledge and to become aware of responsibilities in leadership.
- Develop educational programs and institutions that foster outstanding, internationally-minded specialists with theoretical and practical knowledge.

Contributions to the community and to the world

- Contribute to the development of community and humanity by making available to the world the benefits of research and of human resources with exceptional leadership abilities.
- Giving out equal opportunity to all capable, highly motivated students and faculty, regardless of nationality, race or religion, age or gender, or any other social standing.
- In keeping with our tradition of practice-oriented research and education, create a science park by further promoting university-industry collaboration.
- Dramatically increase the quality and availability of public education, and the consultative services requiring specialized knowledge.
- Open the campus to the general public and consider ways in which the university’s intellectual and material resources such as the libraries, academic materials and facilities can be beneficially utilized.

Establish a culture, environment and management system appropriate for an internationally renowned research and education institution

- Maintain and further develop a university culture that will stimulate the creation of world-class research and education.
- Create an atmosphere conducive to intellectual activities by bringing aesthetic unity to campus and to its natural surroundings.
- Establish a human, material and financial base in a management system which allows a world-class research and educational institution to develop quickly and flexibly.

Message from the President

Welcome to Tohoku University! Situated in the beautiful city of Sendai, our university was founded in 1907 as the third imperial university of Japan. At the time of its inauguration, Tohoku Imperial University was composed of the College of Agriculture and the College of Science. Today, the university boasts ten undergraduate schools, fifteen graduate schools, five research institutes, and many educational and research centers. Our student body, including both graduate and undergraduate students, numbers 17,900 in total, of whom 4,100 are women and 1,200 are international students. Tohoku University today has 5,000 faculty and administrative and technical staff.



Renamed Tohoku University in 1947, our institution today maintains the traditions, values, and ideals established at the time of our founding. We continue to pursue the policies and principles of *“Research First,” “Open Door”* and *“Practice-Oriented Research and Education,”* and we have also developed the new policy of *“A University Open to the World and the Community”* with the aim of *“The Development of Future Leaders.”*

Our educational goal is to foster students who have strong interpersonal skills, personal integrity, a proactive and pioneering spirit, creativity based on mastery of core academic knowledge and skills, and the ability to promote bold and innovative ideas. In research, our primary aim is to realize our ambitions as a *“Research-Intensive University”* and a top-level, world-class research institution. We make every effort to maximize research funding for our core academic activities through support from the government as well as from various foundations and private-sector organizations, thus fortifying our education and research infrastructures which advance our strategic plan for the future of our university. At the same time, we hope to develop new frontiers by strengthening the features of our university in the areas of both research and education.

On April 1, 2004, our university became a national university corporation which means that we are now an independent entity. While continuing to be a “creator and transmitter of knowledge,” Tohoku University is revolutionizing the conventional concept of a university as a “community of knowledge” into the vision of the university as an all-encompassing “enterprise of knowledge.” The steady implementation of this reform is a critical issue for the future of Tohoku University. As Tohoku University is an “enterprise of knowledge,” it is vital that our faculty and administrative and technical staff all work together as a dynamic team to contribute to the enhancement of the university, while moving forward in concert with our alumni and interacting with the world community.

As I assume the office of president, I look forward to obtaining the cooperation and support of the faculty and friends of the university and am delighted to share my thoughts regarding the university’s future. In 2007, our university will hold celebratory events to mark our centenary and will invite many of our domestic and international partner institutions and friends. With the support of our partners, we will promote our education and research as well as our professional programs for the betterment of all humankind. Our daily progress is our most important asset, and we will continue to share our achievements with the world community.

Akihisa INOUE, Ph.D.
President of Tohoku University

Principles of Strategy for International Exchange

The mission of Tohoku University is to search for truth and create and disseminate human knowledge, thereby contributing to the realization of a society where humanity can live in peace and dignity. More specifically, as an inclusive university, bringing together a collaborative and mutually stimulating mix of academic fields, our aims are to honor the wisdom of the world throughout history, identify current and future agendas for scholarship, share our knowledge and discoveries with the community and the world, and actively cultivate individuals with the desire and capability to contribute to humanity.

Throughout the last century, this university upheld three principles: "Research First," "Open-Door," and "Practice-Oriented Research and Education," demonstrating that the members of this institution have been keenly aware that internationalization in research and education is an indispensable condition for achieving our mission and aims.

In August 2000, Tohoku University stated its intention of becoming a world-class research and educational institution through international exchanges. Subsequently, when Tohoku University became a legally independent institution in April 2004, it was decided that the highest priority would henceforth be granted to the "realization of internationally competitive research and education." Furthermore, in November of 2004, Tohoku University declared that it is striving for global excellence under the slogan "Tohoku University, Creating Global Excellence (Tohoku University provides opportunities for world-class research and education)."

As evident from these statements, the promotion of international exchange has become increasingly pivotal to accomplishing the university's mission and aims. Clearly required in the planning and carrying out of international exchanges are the strategies by which we can promote the above mission and goals.

In keeping with this mission to foster both breadth and depth of strategic international exchange and collaboration, Tohoku University is committed to the following basic goals:

- 1) Promote research of the highest world standards through active participation in an international academic network.
- 2) Invite highly motivated, capable and talented individuals from all over the globe and cultivate international leaders who can contribute to the advancement of world development.
- 3) Communicate our accomplishments in education and research internationally and contribute them to the international community.
- 4) Strengthen the foundations of research and education and increase the university's international recognition to support realization of the above three goals.

Tohoku University Official Logo



June 2007 will mark the 100th Anniversary of the founding of Tohoku University. In April of 2005, the university created an official logo to enhance its international recognition and status. The key concepts in the creation of the logo are creativity, globality and tradition. Hagi, or bush clover, is the traditional symbol for Sendai and Miyagino, and is a long associated image of our university. As the university official logo, it is our hope that hagi will become a dignified and familiar image throughout the world.



Presidents of Tohoku University

Number	President	Took office	Left office
1st	Masataro Sawayanagi	March 24, 1911	May 8, 1913
2nd	Tokiyuki Hojo	May 9, 1913	August 24, 1917
(Acting President)	Masataka Ogawa	August 25, 1917	October 14, 1917
3rd	Ryojiro Fukuhara	October 15, 1917	June 20, 1919
4th	Masataka Ogawa	June 21, 1919	June 14, 1928
5th	Jinkichi Inoue	June 15, 1928	June 14, 1931
6th	Kotaro Honda	June 15, 1931	May 30, 1940
7th	Taizo Kumagai	May 31, 1940	February 11, 1946
8th	Yasutaro Satake	February 12, 1946	March 31, 1949
9th	Satomi Takahashi	April 1, 1949	June 30, 1957
10th	Toshio Kurokawa	July 1, 1957	June 30, 1963
11th	Teruji Ishizu	July 1, 1963	October 4, 1965
(Acting President)	Isao Motomura	October 5, 1965	November 19, 1965
12th	Koichi Motokawa	November 20, 1965	February 2, 1971
(Acting President)	Yahiko Mizuno	February 3, 1971	April 30, 1971
13th	Mutsuo Kato	May 1, 1971	April 30, 1977
14th	Shiro Maeda	May 1, 1977	April 30, 1983
15th	Nakao Ishida	May 1, 1983	April 30, 1989
16th	Shigemori Ohtani	May 1, 1989	September 30, 1990
(Acting President)	Kaoru Yoshinaga	October 1, 1990	November 5, 1990
17th	Junichi Nishizawa	November 6, 1990	November 5, 1996
18th	Hiroyuki Abé	November 6, 1996	November 5, 2002
19th	Takashi Yoshimoto	November 6, 2002	November 5, 2006
20th	Akihisa Inoue	November 6, 2006	



1st
Masataro Sawayanagi
(Education)



2nd
Tokiyuki Hojo
(Mathematics)



3rd
Ryojiro Fukuhara
(Education)



4th
Masataka Ogawa
(Chemistry)



5th
Jinkichi Inoue
(Chemistry)



6th
Kotaro Honda
(Physics)



7th
Taizo Kumagai
(Medicine)



8th
Yasutaro Satake
(Medicine)



9th
Satomi Takahashi
(Philosophy)



10th
Toshio Kurokawa
(Medicine)



11th
Teruji Ishizu
(Philosophy)



12th
Koichi Motokawa
(Medicine)



13th
Mutsuo Kato
(Biology)



14th
Shiro Maeda
(Engineering)



15th
Nakao Ishida
(Medicine)



16th
Shigemori Ohtani
(Engineering)



17th
Junichi Nishizawa
(Engineering)



18th
Hiroyuki Abé
(Engineering)



19th
Takashi Yoshimoto
(Medicine)

The 100th Anniversary Projects

As part of the 100th Anniversary Campaign, Tohoku University presented “The 100th Anniversary Seminars” in Tokyo, held jointly with Nihon Keizai Shimbun, Inc (NIKKEI) to provide comprehensible information to the public on the most advanced research developments at the University which includes the 21st Century COE Programs. In addition to those events, “The 100th Anniversary Satellite Seminars” were held in several cities other than Tokyo in collaboration with the branches of Tohoku University Alumni Association.

The 100th Anniversary Seminars of Tohoku University “What Science Can Create in the Next 100 Years”

Organizers: Tohoku University & Nihon Keizai Shimbun, Inc.

	Date	Theme
1	January 25, 2005	“The Future World Created through Nanotechnology: Our Challenges in Mechanical Engineering”
2	April 14, 2005	“Adventure in the Sciences and Human Life: Space, Earth, Life and Future Civilization”
3	August 5, 2005	“Mind, Language, Brain and Electronic Information: How Far Can Science Approach Mankind”
4	December 5, 2005	“Great Advancement in the Quality of Life: Advanced Science for the New-Generation of Medical Treatment”
5	February 10, 2006	“Scientific Approaches on How We Live, Age and Die”

The 100th Anniversary Satellite Seminars of Tohoku University

	Date	Place
1	July 20, 2005	Nagoya
2	October 16, 2005	Yamagata
3	November 26, 2005	Akita
4	December 3, 2005	Utsunomiya
5	December 6, 2005	Fukushima

Seminars for New Students of Tohoku University “Message for New Students who will lead the Next 100 years”

Date	Theme
April 5, 2006	Tohoku University’s Leading Edge and Its Future

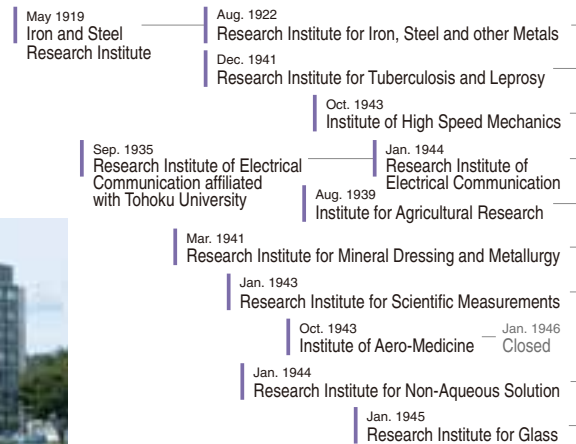
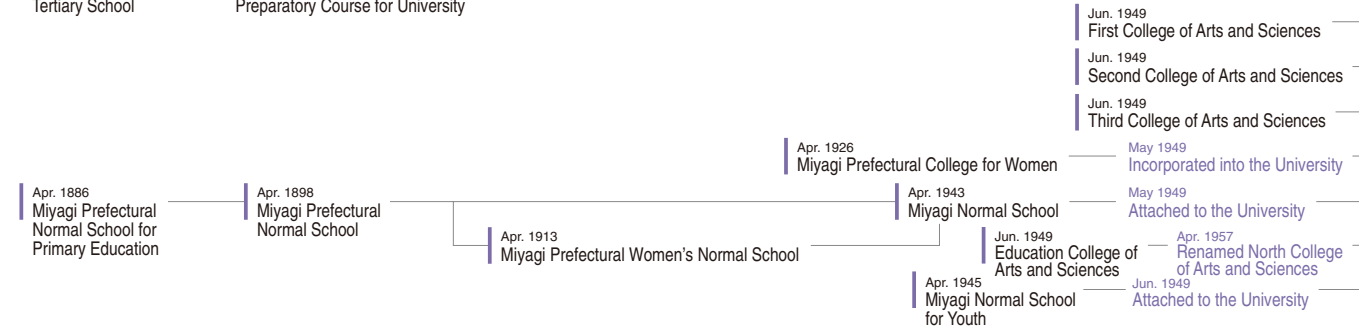
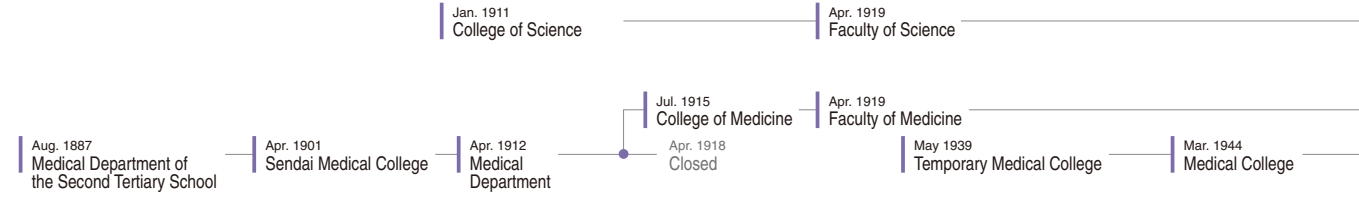
The 100th Anniversary Projects organized by Department

Date	Project	Department
April 12, 2005	Public Symposium on “The Role Played by Science Technology in the 21 st Century”	General Affairs Department
December 9, 2005	International Symposium on “Asia’s Impressions of the Academic Culture in Tohoku University”	Graduate School of Education
February 22, 2006	Presentation of Tohoku University’s Original New Sake “Hagimaru”	Graduate School of Agricultural Science
March 20, 2006	International Symposium on “Creation of Expected Humanity and Humanity Education in the Age of Globalization”	Graduate School of Education
March 22, 2006	The 1 st Seminar on Mechanical Engineering	Graduate School of Engineering

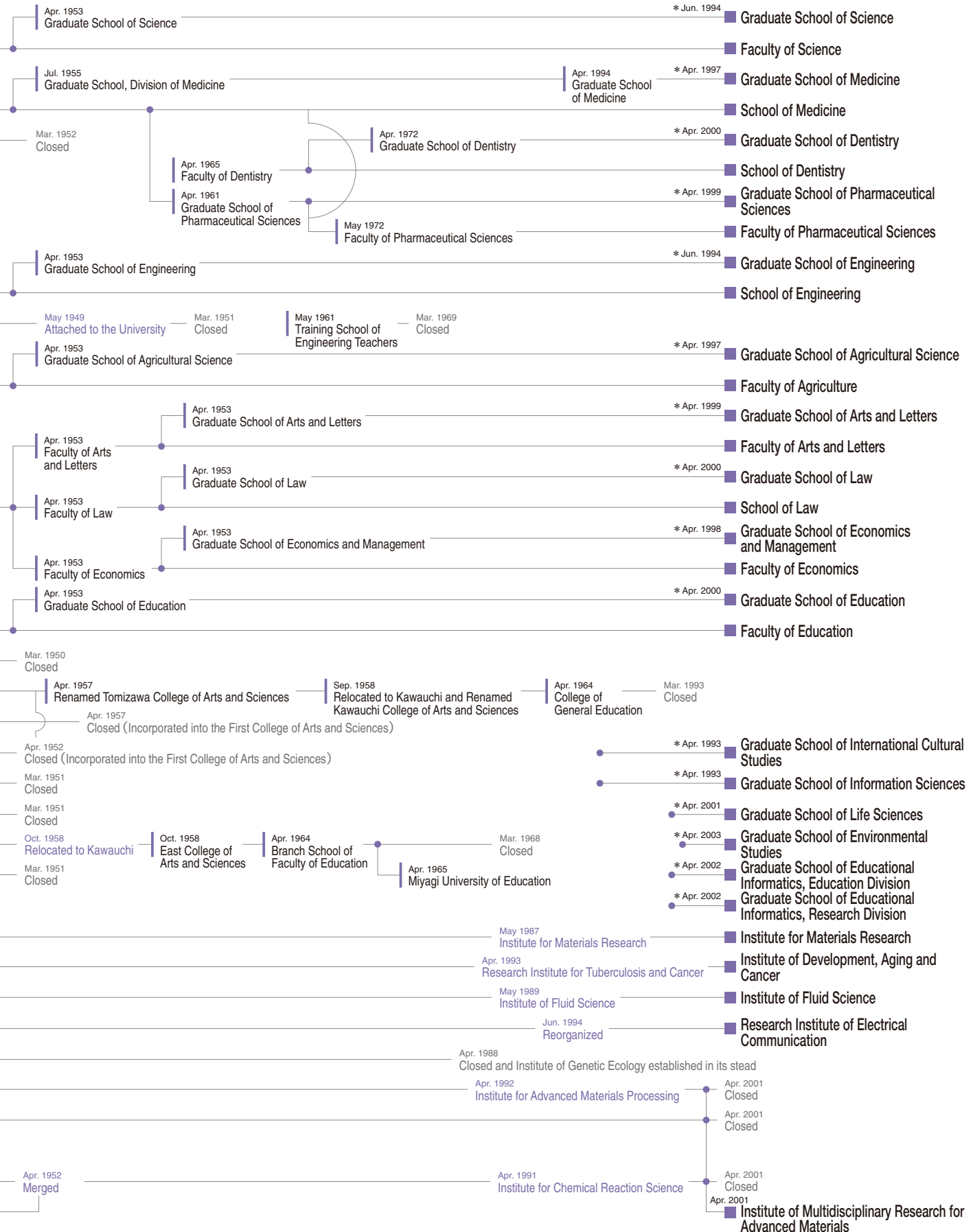


Tohoku University's
Original New Sake
“Hagimaru”

Chronological Chart



Apr. 1953 Graduate Schools established under the new educational system — 1957 The 50th Anniversary of the Foundation — 1982 The 75th Anniversary of the Foundation — 1987 The 80th Anniversary of the Foundation — Apr. 2004 National University Corporation — **Tohoku University**



* Programs for expansion of Graduate Schools

Introduction

Organization

Students

Finance

Major Research Projects

International Exchange

Campuses

Nobel Laureate

Year Awarded	Recipient	Affiliation
1987	Hans Heinrich Rohrer	Visiting Professor, Institute for Materials Research; Honorary Doctor
1999	Ahmet H. Zewail	University Professor; Honorary Doctor
2002	Koichi Tanaka	Visiting Professor, Graduate School of Engineering; Honorary Doctor

Recipients of the Japan's Order of Culture / The Persons of Cultural Merit Award

Japan's Order of Culture honors significant contributions to the advancement or improvement of science, technology, the arts, or culture. The conferment ceremony held yearly on November 3rd (Culture Day) at the Imperial Palace, the Matsu-no-Ma State Room, and is awarded by His Majesty the Emperor of Japan.

The Person of Cultural Merit Award is the second highest cultural honor in Japan in precedence only to the Japan's Order of Culture and is awarded to individuals who have made particularly notable achievements related to the development or refinement of culture.

Order of Culture (Year Awarded)	Persons of Cultural Merit Award	Recipient	Affiliation	Order of Culture (Year Awarded)	Persons of Cultural Merit Award	Recipient	Affiliation
1st (1937)	1st	Kotaro Honda	Research Institute for Iron, Steel and other Metals	49th (1987)	32nd	Takeo Kuwabara	Faculty of Law and Letters
4th (1944)	1st	Kinjiro Okabe	Faculty of Engineering	51st (1989)	36th	Junichi Nishizawa	Research Institute of Electrical Communication
6th (1946)		Kingo Miyabe	College of Agriculture	64th (2002)	55th	Koichi Tanaka	School of Engineering; Honorary Doctor
8th (1949)	1st	Riko Majima	Faculty of Science	—	4th	Shonen Matsumura	College of Agriculture
8th (1949)	1st	Takematsu Okada	Faculty of Science	—	8th	Satomi Takahashi	Faculty of Law and Letters
9th (1950)	1st	Hajime Tanabe	Faculty of Science	—	9th	Seiya Ito	College of Agriculture
9th (1950)	1st	Bansui Tsuchii	Faculty of Law and Letters	—	10th	Yoshio Takeuchi	Faculty of Law and Letters
11th (1952)	2nd	Taizo Kumagai	Research Institute for Tuberculosis and Leprosy	—	13th	Ryuzaburo Hara	Research Institute for Non-Aqueous Solution
12th (1953)	2nd	Hisakatsu Yabe	Faculty of Science	—	17th	Masaichi Majima	Faculty of Science
12th (1953)	2nd	Hakuju Ui	Faculty of Law and Letters	—	22nd	Yasushi Watanabe	Research Institute of Electrical Communication
13th (1954)	4th	Yusuke Hagihara	Faculty of Science	—	28th	Tetsu Sakamura	College of Agriculture
14th (1955)	5th	Hakaru Masumoto	Research Institute for Iron, Steel and other Metals	—	28th	Fukusaburo Numachi	Institute of High Speed Mechanics
15th (1956)	6th	Takejiro Murakami	Research Institute for Iron, Steel and other Metals	—	31st	Takeshi Takei	Faculty of Science
15th (1956)	6th	Hidetsugu Yagi	Faculty of Engineering	—	38th	Yensho Kanakura	Faculty of Arts and Letters
16th (1957)	3rd	Yoshio Yamada	Faculty of Law and Letters	—	39th	Yorio Hinuma	School of Dentistry
17th (1958)	8th	Tetsuo Nozoe	Faculty of Science	—	40th	Shunichi Iwasaki	Research Institute of Electrical Communication
18th (1959)	9th	Tomizo Yoshida	Faculty of Medicine	—	45th	Yunoshin Imai	Institute for Materials Research
24th (1964)	15th	Seiji Kaya	Research Institute for Iron, Steel and other Metals	—	45th	Kinji Shimada	Faculty of Law and Letters
25th (1965)	17th	Shiro Akabori	Faculty of Science	—	52nd	Koji Nakanishi	Faculty of Science
28th (1968)	20th	Toshio Kurokawa	Faculty of Medicine	—	53rd	Takeo Yokobori	School of Engineering
32nd (1971)	23rd	Takuma Yasui	Faculty of Economics	—	53rd	Tsuyoshi Masumoto	Institute for Materials Research
34th (1973)	12th	Ken Ishihara	Faculty of Arts and Letters	—	55th	Donald Keene	Visiting Professor, Faculty of Arts and Letters; Honorary Doctor
36th (1975)	27th	Heisuke Hironaka	Faculty of Science	—	56th	Yasuo Iwata	Faculty of Arts and Letters
45th (1984)	32nd	Shinji Takahashi	Faculty of Medicine	—	56th	Sumio Iijima	Research Institute for Scientific Measurements

Japan Academy Prize (Imperial Prize)

Of all the awards the Japan Academy presents, the Imperial Prize is particularly esteemed. A maximum of nine recipients are selected yearly for the Japan Academy Prize. Both the Imperial and Japan Academy Prizes were established in 1910 and from among the nine recipients, up to one in each of the program's two sections (Section I: Humanities and Social Sciences and Section II: Pure Sciences and Their Applications) is selected for the Imperial Prize. Recipients of the Imperial Prize receive a certificate and a vase presented as an imperial gift by His Majesty the Emperor of Japan.

Year Awarded	Recipient	Affiliation	Year Awarded	Recipient	Affiliation
1918	Keita Shibata	College of Agriculture	1960	Tsugio Miya	Faculty of Arts and Letters
1919	Jun Ishihara	Faculty of Science	1977	Shinji Takahashi	Faculty of Medicine
1921	Gennosuke Fuse	Faculty of Medicine	1982	Shizuo Kakutani	Faculty of Science
1928	Soichi Kakeya	Faculty of Science	1989	Yorio Hinuma	School of Dentistry
1936	Tomizo Yoshida	Faculty of Medicine	1990	Koji Nakanishi	Faculty of Science
1941	Kinjiro Okabe	Faculty of Engineering	1994	Hideki Sakurai	Faculty of Science
1946	Hakaru Masumoto	Research Institute for Iron, Steel and other Metals	2002	Sumio Iijima	Research Institute for Scientific Measurements
1953	Tomizo Yoshida	Faculty of Medicine	2004	Takeshi Yasumoto	Faculty of Agriculture
1960	Osamu Takata	Faculty of Arts and Letters			

Japan Academy Prize

The Japan Academy is an honorary organization composed of scientists and academics who possess distinguished records of academic achievement. The Academy operates under the auspices of the Ministry of Education, Culture, Sports, Science and Technology and initiates and conducts activities that contribute to scientific and academic progress, while providing benefits to its members. The Japan Academy awards prizes to persons who have achieved notable research or who have authored particularly outstanding academic papers or books. The prizes conferred by the Japan Academy are the most prestigious of Japan's Academic Awards.

Year Awarded	Recipient	Affiliation	Year Awarded	Recipient	Affiliation
1914 (4th)	Shirota Kusakabe	Faculty of Science	1940 (30th)	Tario Kikuta	Research Institute for Iron, Steel and other Metals
1916 (6th)	Kotaro Honda	Research Institute for Iron, Steel and other Metals	1941 (31st)	Terutaro Ogata	Faculty of Science
1917 (7th)	Riko Majima	Faculty of Science	1942 (32nd)	Seiji Kaya	Research Institute for Iron, Steel and other Metals
1919 (9th)	Koichi Ichikawa	Faculty of Agriculture	1943 (33rd)	Gyokujo Kihara	Faculty of Medicine
1921 (11th)	Hikoshichiro Matsumoto	Faculty of Science	1944 (34th)	Munio Kotake	Faculty of Science
1925 (15th)	Shinkishi Hatai	Faculty of Science	1947 (37th)	Masaichi Majima	Faculty of Science
1927 (17th)	Takejiro Murakami	Research Institute for Iron, Steel and other Metals	1950 (40th)	Fukusaburo Numachi	Institute of High Speed Mechanics
1931 (21st)	Hakuju Ui	Faculty of Law and Letters	1951 (41st)	Teizo Ogawa	Faculty of Medicine
1931 (21st)	Hakaru Masumoto	Research Institute for Iron, Steel and other Metals	1952 (42nd)	Jitsusaburo Sameshima	Faculty of Science
1932 (22nd)	Shintaro Uda	Faculty of Engineering	1953 (43rd)	Yensho Kanakura	Faculty of Arts and Letters
1933 (23rd)	Hiroshi Nomura	Faculty of Science	1953 (43rd)	Tetsuo Nozoe	Faculty of Science
1934 (24th)	Yoshiaki Tadokoro	Faculty of Science	1953 (43rd)	Masao Naruse	Faculty of Engineering
1935 (25th)	Saburo Unno	Faculty of Science	1954 (44th)	Koichi Motokawa	Faculty of Medicine
1936 (26th)	Toshio Hoshino	Faculty of Science	1955 (45th)	Yensho Kanakura	Faculty of Arts and Letters

* Continued on page 11.

Japan Academy Prize

Year Awarded	Recipient	Affiliation	Year Awarded	Recipient	Affiliation
1955 (45th)	Ryujo Yamada	Faculty of Arts and Letters	1975 (65th)	Hidesato Ito	Institute of High Speed Mechanics
1955 (45th)	Hakuyu Hadano	Faculty of Arts and Letters	1975 (65th)	Takashi Kubota	Faculty of Science
1955 (45th)	Tokan Tada	Faculty of Arts and Letters	1977 (67th)	Kinji Shimada	Faculty of Law and Letters
1955 (45th)	Shiro Akabori	Faculty of Science	1977 (67th)	Shunichi Akasofu	Faculty of Science
1956 (46th)	Ichiro Hori	Faculty of Arts and Letters	1979 (69th)	Taketoshi Sato	Faculty of Law and Letters
1957 (47th)	Yutaka Orimo	Faculty of Law	1980 (70th)	Tetsuji Kametani	Faculty of Pharmaceutical Sciences
1959 (49th)	Osamu Takada	Faculty of Arts and Letters	1981 (71st)	Akira Kinoshita	Faculty of Economics
1960 (50th)	Eizo Kanda	Research Institute for Iron, Steel and other Metals	1983 (73rd)	Tsuyoshi Masumoto	Research Institute for Iron, Steel and other Metals
1961 (51st)	Tomoo Sato	Faculty of Engineering	1987 (77th)	Nakao Ishida	School of Medicine
1961 (51st)	Eikichi Iso	Faculty of Agriculture	1987 (77th)	Shunichi Iwasaki	Research Institute of Electrical Communication
1963 (53rd)	Harujiro Sekiguchi	Research Institute for Iron, Steel and other Metals	1987 (77th)	Yoshikatsu Tsuboi	Faculty of Engineering
1967 (57th)	Yunoshin Imai	Research Institute for Iron, Steel and other Metals	1990 (80th)	Hiroshi Tsuji	Faculty of Engineering
1968 (58th)	Yoshio Kato	Faculty of Science	1992 (82nd)	Hideji Suzuki	Institute for Materials Research
1968 (58th)	Makoto Kandatsu	Institute for Agricultural Research	1993 (83rd)	Hajime Yamamoto	School of Dentistry
1969 (59th)	Mitsuo Miyata	Faculty of Law	1993 (83rd)	Keiya Tada	School of Medicine
1969 (59th)	Usaburo Mizushima	Faculty of Agriculture	1993 (83rd)	Goro Kikuchi	Research Institute for Tuberculosis and Cancer
1970 (60th)	Giichi Yamamoto	Faculty of Science	1994 (84th)	Yasunari Maruyama	Faculty of Arts and Letters
1970 (60th)	Heisuke Hironaka	Faculty of Science	1998 (88th)	Takane Sugihara	Faculty of Law
1971 (61st)	Takeo Yokobori	Faculty of Engineering	2002 (92nd)	Akihisa Inoue	Institute for Materials Research
1972 (62nd)	Kozo Okamoto	Faculty of Medicine	2002 (92nd)	Kokichi Hinata	Faculty of Agriculture
1973 (63rd)	Zenji Nishiyama	Research Institute for Iron, Steel and other Metals	2003 (93rd)	Hiroshi Okamoto	Graduate School of Medicine
1974 (64th)	Junichi Nishizawa	Research Institute of Electrical Communication	2003 (93rd)	Makoto Endo	School of Medicine
1975 (65th)	Toshio Kitazumi	Faculty of Arts and Letters	2005 (95th)	Hideo Ohno	Research Institute of Electrical Communication
1975 (65th)	Yoichi Higuchi	Faculty of Law	2006 (96th)	Atsuto Suzuki	Graduate School of Science

Japan Academy Prize (Duke of Edinburgh Prize)

The Duke of Edinburgh Prize was adopted as a Japan Academy conferment in 1987 in honor of His Royal Highness Prince Philip, Duke of Edinburgh, an Honorary Fellow of the Japan Academy. This prize is awarded once every two years to an individual who has posted outstanding achievements in the area of wildlife protection and species preservation, to date there has been nine people presented with this award.

Year Awarded	Recipient	Affiliation
1988	Makoto Numata	Institute for Agricultural Research
2002	Yasushi Kurihara	Faculty of Science

University Awards

Recipients of the President's Special Award

This award honors current members of the Tohoku University faculty for outstanding achievements and for important contributions leading to the development of academic culture for the advancement of education and research at the University.

Date	Name	Affiliation	Achievement
June 29, 2005	Hideo Ohno	Professor, Research Institute of Electrical Communication	For receiving the 2005 Japan Academy Prize on June 13th 2005, for his Studies in Quantum Control of Electrons by Semiconductor Nanostructures and Ferromagnetism
November 26, 2005	Motoko Kotani	Professor, Graduate School of Science	For receiving the 25th Saruhashi Prize (recognizing outstanding achievement by a woman in natural sciences) on May 28th 2005, for her work in Discrete Geometric Analysis on a Crystal Lattice
March 24, 2006	Atsuto Suzuki	Deputy President Professor, Graduate School of Science	For receiving the 2006 Japan Academy Prize on March 13th 2006, for his research work in the field of antineutrino science

Recipients of the President's Education Award

This award honors faculty members for outstanding educational achievement in regards to instruction, teaching methods, and educational support seen in the classes, extracurricular activities, international exchange, and other university interactions.

FY2005

Name	Affiliation	Achievement
Toshiaki Muramoto	Associate Professor, Graduate School of Information Sciences	For outstanding class instruction in the subjects common across campus: Raising Educational Outcomes through Improvement and Innovation of Class Instruction
Yasuaki Onoda	Associate Professor, Graduate School of Engineering	For implementation of education classes jointly designed with American counterparts through the project "Cross Cultural Lessons in Architecture: A Pacific Rim Exchange Studio"
Working Group for Compilation of an Information Research Guide	Library	For outstanding educational support through the project "Compilation of the Guide for Attainment of Information Literacy"

FY2004

Name	Affiliation
Working Group for the Implementation of Interdisciplinary Science Experiments	Graduate School of Science
Yuko Watarai Michiko Ito	Educational Affairs Assistant, Graduate School of Science
Katsuhiko Kida	Technical Assistant, Graduate School of Dentistry

FY2003

Name	Affiliation
Katsutoshi Mizuhara	Professor, Graduate School of Education
Izumi Saita	Professor, Graduate School of Arts and Letters
Kenichi Sato	Technical Expert, Graduate School of Science
Toshiyuki Ohtomo	Technical Assistant, Education and Student Support Department
Mikiko Nakajima	Lecturer, Graduate School of Engineering

Recipients of the President's Award (FY2005)

The President's Award recognizes students for their outstanding academic achievement.

Undergraduate

Yuichi Konno	Faculty of Arts and Letters
Suzuka Saeki	Faculty of Arts and Letters
Fumie Komatsu	Faculty of Education
Ruiko Ando	School of Law
Chie Araki	School of Law
Yuka Motosugi	Faculty of Economics
Tomoe Yoshida	Faculty of Economics
Tomoaki Shimada	Faculty of Economics
Koichi Kaizuka	Faculty of Science
Ai Yamakage	Faculty of Science
Yoshiyuki Manabe	Faculty of Science
Shunsuke Tsuzuki	School of Medicine
Ayumi Ito	School of Dentistry
Yasuo Uchida	Faculty of Pharmaceutical Sciences
Yusuke Miura	School of Engineering
Shun Yokoyama	School of Engineering
Yuki Okuyama	School of Engineering
Belmoubarik Mohamed	School of Engineering
Ai Sasaki	School of Engineering
Taeho Kim	School of Engineering
Tetsuya Kawano	School of Engineering
Shiro Kikuchi	School of Engineering
Makoto Honma	School of Engineering
Ayaka Hoshi	Faculty of Agriculture
Mutsumi Fukuda	Faculty of Agriculture

Graduate (Master)

Katsuyoshi Kubota	Graduate School of Law
Momoyo Ogawa	Graduate School of Science
Manabu Kanno	Graduate School of Science
Shunsuke Yamaki	Graduate School of Engineering
Aya Miyazaki	Graduate School of Engineering
Francisco Eduardo Arrecis Sosa	Graduate School of Engineering
Jinko Sugawara	Graduate School of Educational Informatics, Education Division

Graduate (Doctor)

Miho Suzuki	Graduate School of Arts and Letters
Xi Chen	Graduate School of Education
Wirawan Dony Dahana	Graduate School of Economics and Management
Shinya Okabe	Graduate School of Science
Jun Muto	Graduate School of Science
Asuka Suzuki	Graduate School of Medicine
Motoko Maekawa	Graduate School of Medicine
Zhiqian Yu	Graduate School of Dentistry
Tsuyoshi Mikkaichi	Graduate School of Pharmaceutical Sciences
Takashi Yamaguchi	Graduate School of Engineering
Mio Sakuma	Graduate School of Engineering
Chang-ho Jung	Graduate School of Engineering
Hirokazu Kaji	Graduate School of Engineering
Takeshi Shimosato	Graduate School of Agricultural Science
Seung Hoon Cho	Graduate School of International Cultural Studies
Takehiro Ito	Graduate School of Information Sciences
Akira Sato	Graduate School of Life Sciences
Giichiro Kawauchi	Graduate School of Environmental Studies

University Awards

Recipients of the Sawayanagi Prize

The Sawayanagi Prize (Tohoku University Prize for the Encouragement of Gender Equality) aims to promote equality between men and women by honoring individuals and groups that have carried out research and other activities related to gender equality.

FY2005

Name	Affiliation	Category	Theme
Emi Yano	21 st Century COE, Gender Law and Policy Center Fellow, Graduate School of Law	Research	Swedish Policies to Combat Domestic Violence – A Perspective on Domestic Violence and the Pursuit of Gender Equality
Masahiro Ishigaki	Research Associate, Graduate School of Economics and Management	Activity	Organizing and Expanding a Dads' Network to Encourage the Father Involvement in Family Education
Masato Hatakeyama	Doctoral Student, Graduate School of Economics and Management	Project	A Survey Study Involving the Rural Women, their Growth and Advancements Learned through the Process of Entrepreneurial Activity
Rumi Matsuzaki	Doctoral Student, Graduate School of Arts and Letters	Project (Special Award)	The Pre-modern Samurai Society's Gender System and the Women's Role

FY2004

Name	Affiliation	Category
In ja Lee	Lecturer, Graduate School of Education	Research
Aki Tashiro	Research Student, Graduate School of Law	Research (Special Award)
Akane Kamei	Doctoral Student, Graduate School of Information Sciences	Activity
Shin Fukudo	Professor, Graduate School of Medicine	Project
Taeko Misumi	Doctoral Student, Graduate School of Arts and Letters	Project (Special Award)

FY2003

Name	Affiliation	Category
Shigeto Tanaka	Lecturer, Graduate School of Arts and Letters	Research
Kenji Nemoto	Lecturer, Graduate School of Medicine	Empowerment
Yoshikazu Ogawa	Associate Professor, Graduate School of Education	Project
Rihoko Katsumata	Undergraduate Student, Faculty of Economics	Project (Special Award)

Recipients of the Tohoku University's Professor Fujino Award (Lu Xun Award)

This award recognizes Chinese individuals and groups for contributing to the advancement of education and research through academic exchange at Tohoku University.

Tohoku University's Professor Fujino Award

Year	Name	Affiliation	Achievement
FY2005	Sun Yi	Director, Beijing Lu Xun Museum	For his diligent efforts leading to the publication of a Chinese translation "Lu Xun and Sendai," the product of research by persons affiliated with Tohoku University; and for his hard work as a Chinese organizer for The International Symposium on Lu Xun—"His Starting Point and Memories of Sendai," jointly sponsored by Tohoku University and Beijing Lu Xun Museum.

Tohoku University's Lu Xun Award

Year	Name	Affiliation
FY2004	Gu Binglin	President, Tsinghua University

Recipients of the Tohoku University's Professor Fujino Incentive Award (Lu Xun Incentive Award)

This award is presented to outstanding and promising Chinese exchange students currently enrolled in the graduate school of Tohoku University.

Tohoku University's Professor Fujino Incentive Award

Year	Name	Affiliation
FY2005	Rina Sa	Graduate School of Arts and Letters
	Guangyu Jin	Graduate School of Economics and Management
	Hongmei Dai	Graduate School of Medicine
	Zhiqian Yu	Graduate School of Dentistry
	Chen Lu	Graduate School of Engineering

Tohoku University's Lu Xun Incentive Award

Year	Name	Affiliation
FY2004	Jianjun Wang	Graduate School of Engineering
	Minghao Jin	Graduate School of Economics and Management
	Li Lan	Graduate School of Medicine
	Jun Feng	Graduate School of Pharmaceutical Sciences

Recipients of the Honda Kotaro Memorial Prize

This award is presented on an occasional basis to honor foreign individuals or groups for outstanding contributions in the advancement of education and research at Tohoku University through international exchange.

Honda Kotaro Memorial Prize

Year	Name	Nationality	Affiliation
FY2004	John L. Stollery	United Kingdom	Emeritus Professor, Cranfield University
	A. Lindsay Greer	United Kingdom	Professor, University of Cambridge
	Sir Robert Yewdall Jennings	United Kingdom	Former President, International Court of Justice

Year	Name	Nationality	Affiliation
FY2003	Hans-Ludwig Schreiber	Germany	Former President, University of Göttingen
	Hans Grönig	Germany	Professor Emeritus, University RWTH Aachen
	Reiner Kirchheim	Germany	Professor, University of Göttingen
	Konrad Samwer	Germany	Professor, University of Göttingen

Recipients of the Students' Friendship Association Award (FY2005)

This award aims to honor students for outstanding athletic achievement and who epitomize the reputation of Tohoku University.

Students' Friendship Association President's Award

Name	Affiliation
Daisuke Goto	Orienteering Club
Ryu Ohishi	Tennis Club
Tasuku Nakamura	Tennis Club
Baku Nishikawa	Track and Field Club
Hironori Ito	Baseball Club (Semihard ball use)

Students' Friendship Association Special Award

Name	Affiliation
Tomoko Izumo	Cheer Group

Organization

Introduction

Organization

Students

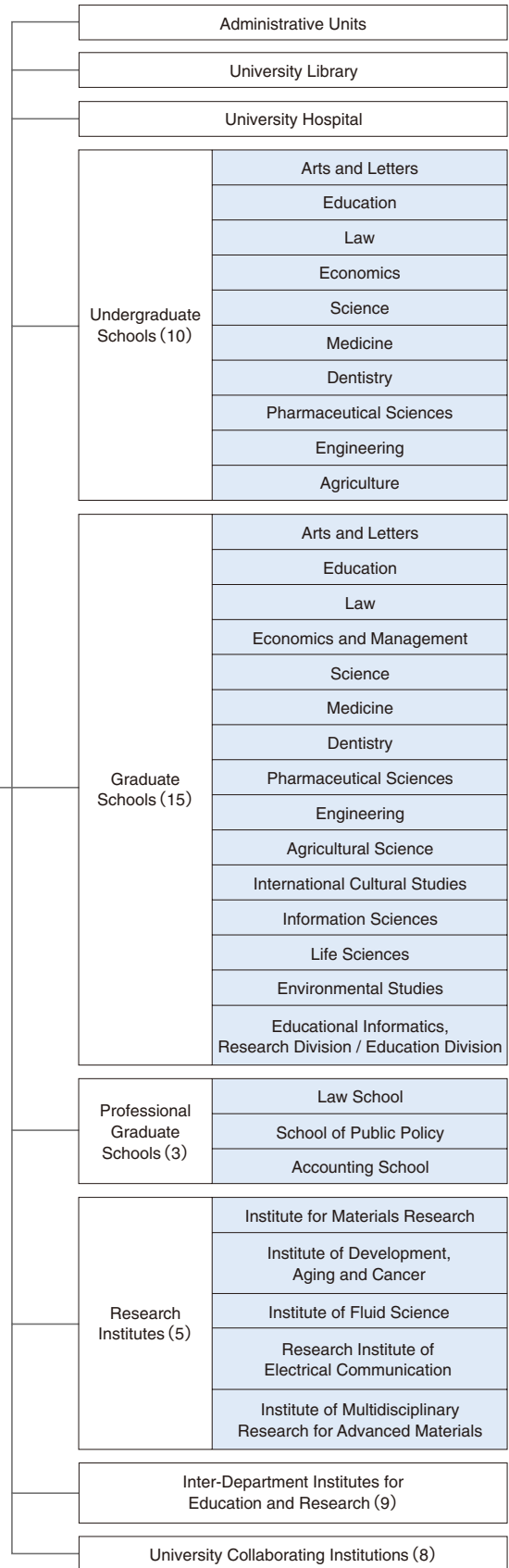
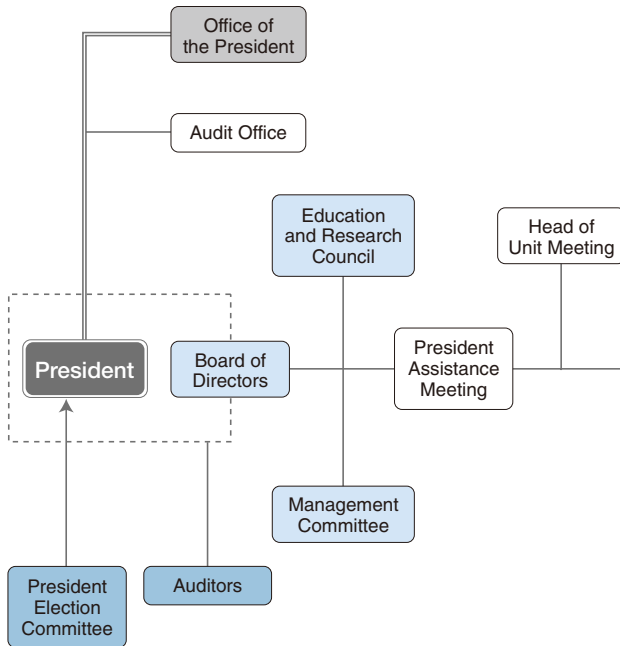
Finance

Major Research Projects

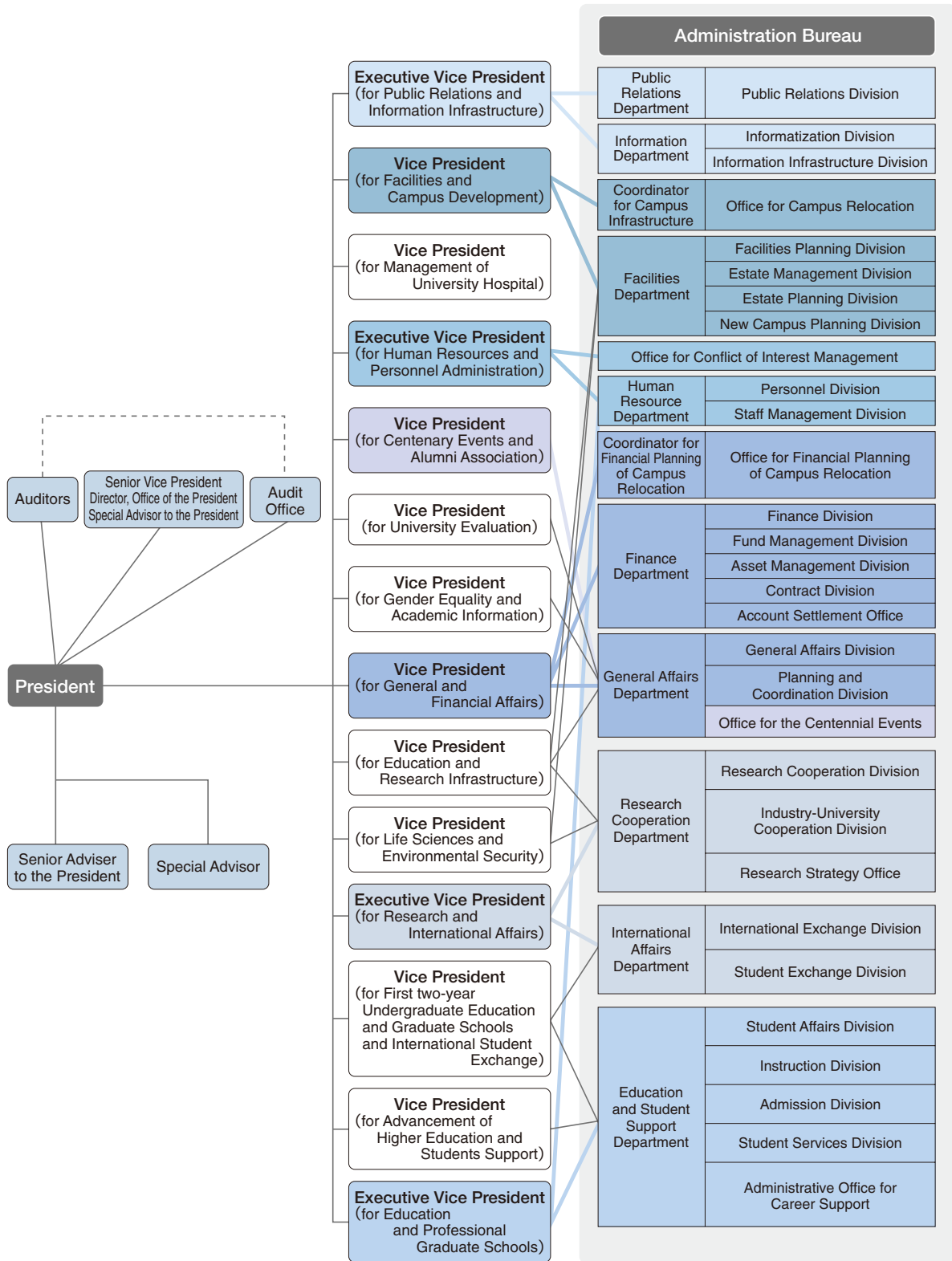
International Exchange

Campuses

University Governance and Academic Units



Administration



Introduction

Organization

Students

Finance

Major Research Projects

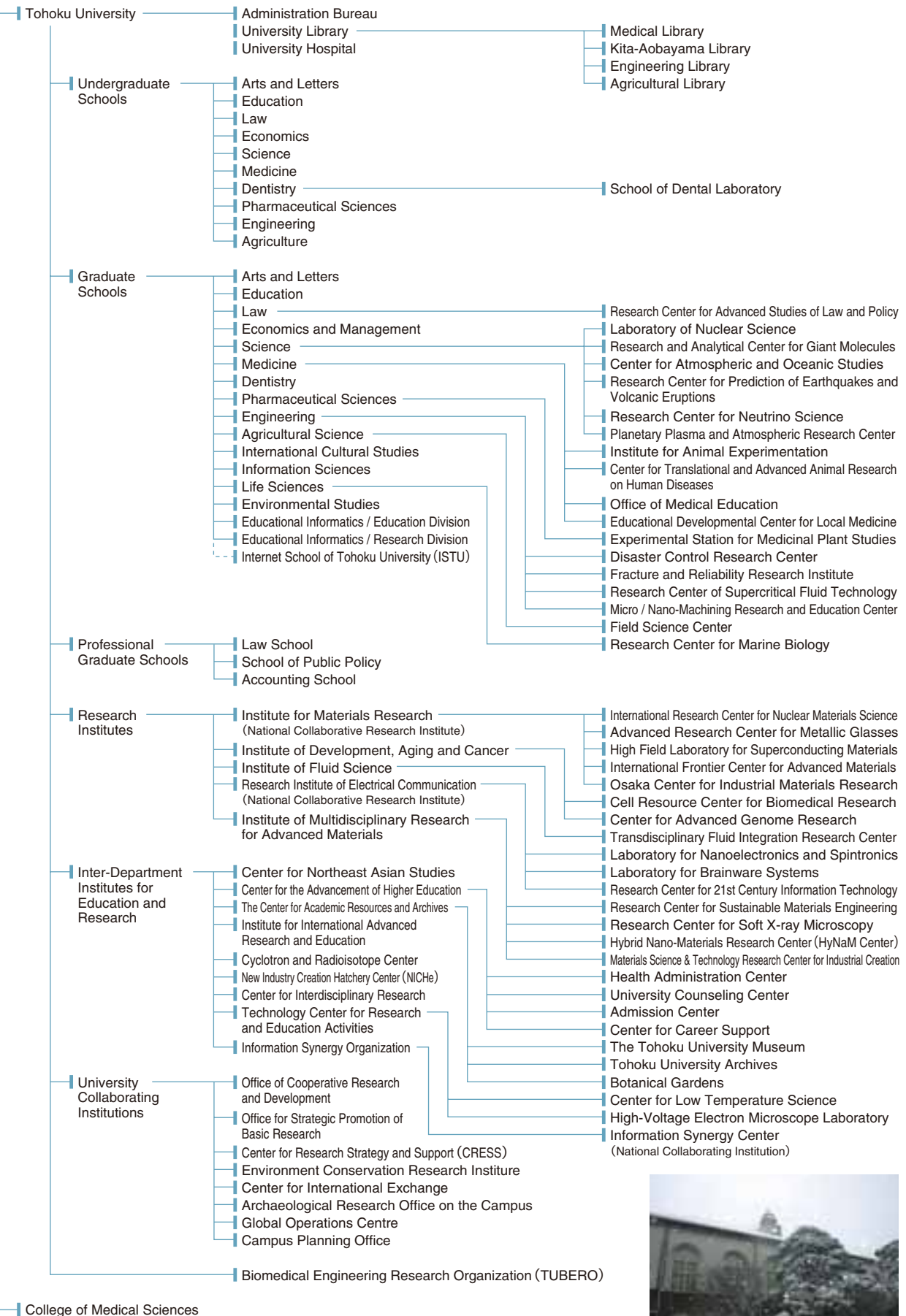
International Exchange

Campuses

Organizational Charts

(as of May 1, 2006)

National University Corporation Tohoku University



Administrative Staff

(as of January 12, 2007)

President	Akihisa INOUE	Senior Advisor to the President	Richard DASHER
Executive Vice President (for Education and Professional Graduate Schools)	Toshiya UEKI	Senior Advisor to the President	Masud BEHNIA
Executive Vice President (for Research and International Affairs)	Tetsuo SHOJI	Senior Advisor to the President	Takashi YOSHIMOTO
Executive Vice President (for Public Relations and Information Infrastructure)	Kazuhiko SUGIYAMA	Special Advisor (for Entrance Exam)	Osamu KAMOIKE
Executive Vice President (for Human Resources and Personnel Administration)	Michiteru TOKUSHIGE	Special Advisor (for Student Life)	Atsushi HIGASHITANI
Executive Vice President	Hiroyuki YOSHIKAWA	Special Advisor (for COI Management)	Akio NISHIZAWA
Executive Vice President	Hiromitsu ISHI	Special Advisor (for Centenary History Book)	Takao IMAIZUMI
Executive Vice President	Masuo HOSOKAWA	Special Advisor (for Centenary Events)	Shigenao MARUYAMA
Auditor	Hiroshi OKAMOTO	Special Advisor (for Regional and International Affairs)	Hiroshi FUKUNISHI
Auditor	Tomoo NISHIKAWA	Special Advisor (for Database)	Hideaki SONE
Vice President (for General and Financial Affairs)	Yukihisa KITAMURA	Special Advisor (for Transport Planning)	Yasuo MORITA
Vice President (for Advancement of Higher Education and Students Support)	Katsuhiko ARAI	Special Advisor (for Gender Equality)	Noriko OSUMI
Vice President (for First two-year Undergraduate Education and Graduate Schools and International Student Exchange)	Osamu HASHIMOTO	Special Advisor to the President	Ken-ichi OHBUCHI
Vice President (for Life Sciences and Environmental Security)	Kazuo SUGAMURA	Special Advisor to the President	Katsutoshi MIZUHARA
Vice President (for Gender Equality and Academic Information)	Keiichi NOE	Special Advisor to the President	Hiroshi YOSHIDA
Vice President (for Education and Research Infrastructure)	Makoto WATANABE	Special Advisor to the President	Motoko KOTANI
Vice President (for Management of University Hospital)	Susumu SATOMI	Special Advisor to the President	Sadayoshi ITO
Vice President (for Facilities and Campus Development)	Hisakazu HAGIWARA	Special Advisor to the President	Shunji SUGAWARA
Vice President (for University Evaluation)	Yoshinori YAMAMOTO	Special Advisor to the President	Tetsuya TERASAKI
Vice President (for Centenary Events and Alumni Association)	Hitoshi OHNISHI	Special Advisor to the President	Masuo OKADA
■ Administration Bureau			
Senior Vice President Director, Office of the President	Yukihisa KITAMURA	[Human Resource Department]	
Specially Appointed Professor (for University Management)	Eiji HYOUDO	Director	Toshimitsu ISHIYAMA
Specially Appointed Professor (for University Management)	Yoshiyuki SATO	[Finance Department]	
Coordinator for Financial Planning of Campus Relocation	Takayuki IDE	Director	Hiroshi SAITO
Coordinator for Campus Infrastructure	Osamu YAMASHITA	[Facilities Department]	
[General Affairs Department]		Director	Osamu YAMASHITA
Director	Hisao OOTOMO	[Public Relations Department]	
[Education and Student Support Department]		Director	Hisao OOTOMO
Director	Minoru SATO	[Information Department]	
[Graduate Schools / Undergraduate Schools]		Director	Yoshiyuki KAWAZOE
[Graduate School / Faculty of Arts and Letters]		[International Affairs Department]	
Dean	Junsuke HARA	Director	Yasuo KAINAI
[Graduate School / Faculty of Education]		[Graduate School / School of Engineering]	
Dean	Katsuhiko ARAI	Dean	Tatsuo UCHIDA
[Graduate School / School of Law]		[Graduate School of Agricultural Science / Faculty of Agriculture]	
Dean	Kaoru INABA	Dean	Yukio AKIBA
[Graduate School of Economics and Management / Faculty of Economics]		[Graduate School of International Cultural Studies]	
Dean	Shuitsu HINO	Dean	Teruo ASAKAWA
[Graduate School / Faculty of Science]		[Graduate School of Information Sciences]	
Dean	Osamu HASHIMOTO	Dean	Komei SASAKI
[Graduate School / School of Medicine]		[Graduate School of Life Sciences]	
Dean	Kazuo SUGAMURA	Dean	Toshio IJIMA
[Graduate School / School of Dentistry]		[Graduate School of Environmental Studies]	
Dean	Makoto WATANABE	Dean	Shoji TANIGUCHI
[Graduate School / Faculty of Pharmaceutical Sciences]		[Graduate School of Educational Informatics, Education Division]	
Dean	Hideo TAKEUCHI	Dean	Shin IWASAKI
		[Graduate School of Educational Informatics, Research Division]	
		Dean	Shin IWASAKI

Administrative Staff

Research Institutes

【Institute for Materials Research】

Director Kazuo NAKAJIMA

【Institute of Development, Aging and Cancer】

Director Hiroshi FUKUDA

【Institute of Fluid Science】

Director Toshiaki IKOHAGI

【Research Institute of Electrical Communication】

Director Hiromasa ITO

【Institute of Multidisciplinary Research for Advanced Materials】

Director Fumio SAITO

University Library

【University Library】

Director Keiichi NOE

University Hospital

【University Hospital】

Director Susumu SATOMI

Inter-Department Institutes for Education and Research

【Center for Northeast Asian Studies】

Director Arata HIRAKAWA

【Center for the Advancement of Higher Education】

Director Takao SAKAMOTO

【Health Administration Center】

Director Wataru HIDA

【University Counseling Center】

Director Takao SAKAMOTO

【Admission Center】

Director Osamu KAMOIKE

【Center for Career Support】

Director Takao SAKAMOTO

【The Center for Academic Resources and Archives】

Director Mitsuo SUZUKI

【The Tohoku University Museum】

Director Masayuki EHIRO

【Tohoku University Archives】

Director Takao IMAIZUMI

【Botanical Gardens】

Director Mitsuo SUZUKI

【Institute for International Advanced Research and Education】

Director Satoshi IHARA

【Cyclotron and Radioisotope Center】

Director Keizo ISHII

【New Industry Creation Hatchery Center (NICHe)】

Director Ichiro NAKAJIMA

【Center for Interdisciplinary Research】

Director Kazuo NAKAJIMA

【Technology Center for Research and Education Activities】

Director Yoshinori YAMAMOTO

【Center for Low Temperature Science】

Director Haruyoshi AOKI

【High-Voltage Electron Microscope Laboratory】

Director Toyohiko KONNO

【Information Synergy Organization】

Director Kazuhiko SUGIYAMA

【Information Synergy Center】

Director Yoshiyuki KAWAZOE

University Collaborating Institutions

【Office of Cooperative Research and Development】

Director Tetsuo SHOJI

【Office for Strategic Promotion of Basic Research】

Director Makoto WATANABE

【Center for Research Strategy and Support (CRESS)】

Director Tetsuo SHOJI

【Environment Conservation Research Institute】

Director Muneyoshi YAMADA

【Center for International Exchange】

Director Tetsuo SHOJI

【Archaeological Research Office on the Campus】

Director Kaoru AKOSHIMA

【Global Operations Centre】

Director Tetsuo SHOJI

【Campus Planning Office】

Director Susumu SUGIYAMA

Biomedical Engineering Research Organization

【Biomedical Engineering Research Organization (TUBERO)】

Director Makoto TAMAI

College of Medical Science

【College of Medical Science】

President Akihisa INOUE

Dean Masayuki ZUGUCHI

President Election Committee / Board of Directors / Management Committee

(as of November 6, 2006)

President Election Committee

External Members	
Syun-Ichi AKASOFU	Director, International Arctic Research Center, University of Alaska
Shigeru ODA	Lawyer
	Member of the Japan Academy
	Former Judge, International Court of Justice
Kyuzo NAKAMURA	President and CEO, ULVAC, Inc.
Toshiaki YASHIMA	Honorary Chairman, Tohoku Economic Federation
Akio YAMANOI	Senior Corporate Advisor, AJINOMOTO, Co., Inc.
Teruo KISHI	President, National Institute for Materials Science

Internal Members	
Katsuhiro ARAI	Vice President
Osamu HASHIMOTO	Vice President
Kazuo SUGAMURA	Vice President
Toshiaki IKOHAGI	Director, Institute of Fluid Science
Kaoru INABA	Dean, Graduate School of Law
Tatsuo UCHIDA	Dean, Graduate School of Engineering

Board of Directors

Akihisa INOUE	President
Toshiya UEKI	Executive Vice President
Tetsuo SHOJI	Executive Vice President
Kazuhiko SUGIYAMA	Executive Vice President

Michiteru TOKUSHIGE	Executive Vice President
Hiroyuki YOSHIKAWA	Executive Vice President
Hiromitsu ISHI	Executive Vice President
Masuo HOSOKAWA	Executive Vice President

Management Committee

External Members	
Syun-Ichi AKASOFU	Director, International Arctic Research Center, University of Alaska
Yuichiro ANZAI	President, Keio University
Katsuhiko UMEHARA	Mayor of Sendai
Shigeru ODA	Lawyer
	Member of the Japan Academy
	Former Judge, International Court of Justice
Motoyuki ONO	President, Japan Society for the Promotion of Science
Tadashi ONODERA	President and Chairman, KDDI Corporation
Teruo KISHI	President, National Institute for Materials Science
Reiko KURODA	Professor, Graduate School of Arts and Sciences, University of Tokyo
Ryoki SUGITA	President and CEO, NIHON KEIZAI SHIMBUN, Inc.
Richard DASHER	Director, US-Asia Technology Management Center, School of Engineering, Stanford University
Atsuko TOYAMA	President, New National Theatre Foundation Former Minister of Education, Culture, Sports, Science and Technology
Kyuzo NAKAMURA	President and CEO, ULVAC, Inc.
Yoshihiro MURAI	Governor of Miyagi Prefecture
Toshiaki YASHIMA	Honorary Chairman, Tohoku Economic Federation
Akio YAMANOI	Senior Corporate Advisor, AJINOMOTO, Co., Inc.

Internal Members	
Akihisa INOUE	President
Toshiya UEKI	Executive Vice President
Tetsuo SHOJI	Executive Vice President
Kazuhiko SUGIYAMA	Executive Vice President
Michiteru TOKUSHIGE	Executive Vice President
Yukihisa KITAMURA	Senior Vice President Director, Office of the President
Katsuhiro ARAI	Vice President Dean, Graduate School of Education
Osamu HASHIMOTO	Vice President Dean, Graduate School of Science
Kazuo SUGAMURA	Vice President Dean, Graduate School of Medicine
Keiichi NOE	Vice President Director, University Library
Makoto WATANABE	Vice President Dean, Graduate School of Dentistry
Susumu SATOMI	Vice President Director, University Hospital
Hisakazu HAGIWARA	Vice President
Yoshinori YAMAMOTO	Vice President
Tatsuo UCHIDA	Dean, Graduate School of Engineering
Yukio AKIBA	Dean, Graduate School of Agricultural Science



Education and Research Council

Akihisa INOUE	President
Toshiya UEKI	Executive Vice President
Tetsuo SHOJI	Executive Vice President
Kazuhiko SUGIYAMA	Executive Vice President
Michiteru TOKUSHIGE	Executive Vice President
Hiroyuki YOSHIKAWA	Executive Vice President
Hiromitsu ISHI	Executive Vice President
Masuo HOSOKAWA	Executive Vice President
Yukihisa KITAMURA	Senior Vice President Director, Office of the President
Katsuhiro ARAI	Vice President Dean, Graduate School of Education
Osamu HASHIMOTO	Vice President Dean, Graduate School of Science
Kazuo SUGAMURA	Vice President Dean, Graduate School of Medicine
Keiichi NOE	Vice President Director, University Library
Makoto WATANABE	Vice President Graduate School of Dentistry
Susumu SATOMI	Vice President Director, University Hospital
Hisakazu HAGIWARA	Vice President
Yoshinori YAMAMOTO	Vice President
Hitoshi OHNISHI	Vice President
Junsuke HARA	Dean, Graduate School of Arts and Letters
Kaoru INABA	Dean, Graduate School of Law
Shuitsu HINO	Dean, Graduate School of Economics and Management
Hideo TAKEUCHI	Dean, Graduate School of Pharmaceutical Sciences
Tatsuo UCHIDA	Dean, Graduate School of Engineering
Yukio AKIBA	Dean, Graduate School of Agricultural Science
Teruo ASAKAWA	Dean, Graduate School of International Cultural Studies
Komei SASAKI	Dean, Graduate School of Information Sciences
Toshio IJIMA	Dean, Graduate School of Life Sciences
Shoji TANIGUCHI	Dean, Graduate School of Environmental Studies
Kazuo NAKAJIMA	Director, Institute for Materials Research
Hiroshi FUKUDA	Director, Institute of Development, Aging and Cancer

Toshiaki IKOHAGI	Director, Institute of Fluid Science
Hiromasa ITO	Director, Research Institute of Electrical Communication
Fumio SAITO	Director, Institute of Multidisciplinary Research for Advanced Materials
Shin IWASAKI	Dean, Graduate School of Educational Informatics, Research Division
Arata HIRAKAWA	Director, Center for Northeast Asian Studies
Masaru NAKAMURA	Professor, Graduate School of Arts and Letters
Katsutoshi MIZUHARA	Professor, Graduate School of Education
Hideaki SERIZAWA	Professor, Graduate School of Law
Jiro AKITA	Professor, Graduate School of Economics and Management
Kenshiro OTSUKI	Professor, Graduate School of Science
Shigeki SHIBAHARA	Professor, Graduate School of Medicine
Haruhiko TAKADA	Professor, Graduate School of Dentistry
Akira NAGANUMA	Professor, Graduate School of Pharmaceutical Sciences
Masaaki INUTAKE	Professor, Graduate School of Engineering
Teruo MIYAZAWA	Professor, Graduate School of Agricultural Science
Fumio KOBAYASHI	Professor, Graduate School of International Cultural Studies
Takao NISHIZEKI	Professor, Graduate School of Information Sciences
Kensaku MIZUNO	Professor, Graduate School of Life Sciences
Yoshihiro KIMURA	Professor, Graduate School of Environmental Studies
Sadamichi MAEKAWA	Professor, Institute for Materials Research
Akira YASUI	Professor, Institute of Development, Aging and Cancer
Shigenao MARUYAMA	Professor, Institute of Fluid Science
Masafumi YANO	Professor, Research Institute of Electrical Communication
Yukio NODA	Professor, Institute of Multidisciplinary Research for Advanced Materials
Takashi SASANO	Vice Director, University Hospital
Wataru HIDA	Professor, Inter-Department Institutes for Education
Keizo ISHII	Professor, Inter-Department Institutes for Research



University Personnel

(as of May 1, 2006)

Classification	President	Executive Vice Presidents	Auditors	Professors	Associate Professors	Lecturers	Research Associates	Sub Total	Administrative/ Technical Staff	Grand Total
President	1							1		1
Executive Vice President		6 (1)						6 (1)		7
Auditor			2					2		2
Chief Presidential Secretary									1	1
Secretarial Assistant to the Executive Vice President									3	3
Deputy President									1	1
Coordinator for Financial Planning of Campus Relocation									1	1
General Affairs Department							1	1	26	27
Education and Student Support Department									68	68
Human Resource Department									43	43
Finance Department									67	67
Research Cooperation Department									18	18
Administration Bureau									45	45
Facilities Department									7	7
Public Relations Department									35	35
Information Department									16	16
International Affairs Department									1	1
Office for Conflict of Interest Management									2	2
Office for Financial Planning of Campus Relocation									4	4
Office for Campus Relocation									5	5
Audit Office									5	5
Graduate School of Arts and Letters				49	20	9	18	96	18	114
Graduate School of Education				19	10	2	2	33	11	44
Graduate School of Law				30	19	1	13	63	16	79
Graduate School of Economics and Management				36	21	1	7	65	15	80
Graduate School of Science				85	79	7	99	270	101	371
Graduate School of Medicine				97	66	18	86	267	44	311
Biomedical Engineering Research Organization				10	15		19	44		44
Graduate School of Dentistry				24	10	8	65	107	24	131
School for Dental Laboratory Technicians						3		3		3
Graduate School of Pharmaceutical Sciences				16	14	5	33	68	18	86
Graduate School of Engineering				114	97	9	131	351	189	540
Graduate School of Agricultural Science				39	38	1	35	113	61	174
Graduate School of International Cultural Studies				29	27			56	10	66
Graduate School of Information Sciences				38	27	9	24	98	14	112
Graduate School of Environmental Studies				24	12	1	20	57	5	62
Graduate School of Life Sciences				26	23	2	17	68	19	87
Graduate School of Educational Informatics				4	4		3	11		11
Institute for Materials Research				28	35	3	67	133	91	224
Institute of Development, Aging and Cancer				17	8	2	17	44	20	64
Institute of Fluid Science				16	8	3	13	40	25	65
Research Institute of Electrical Communication				27	17		29	73	30	103
Institute of Multidisciplinary Research for Advanced Materials				47	20	7	66	140	76	216
University Library									25	25
Main Library									8	8
Medical Library									4	4
Kita-Aobayama Library									11	11
Engineering Library									4	4
Agricultural Library									4	4
University Hospital				4	17	66	210	297	1,178	1,475
Center for Northeast Asian Studies				12	7		6	25		25
Center for the Advancement of Higher Education				12	14	10	21	57	13	70
The Center for Academic Resources and Archives				3	3		8	14	4	18
Institute for International Advanced Research and Education									1	1
Cyclotron and Radioisotope Center				4	1	1	6	12	1	13
New Industry Creation Hatchery Center				8	1	1	2	12	5	17
Center for Interdisciplinary Research				4	4			8	1	9
Information Synergy Organization				4	4		2	10	1	11
Office of Cooperative Research and Development					1			1	3	4
Environment Conservation Research Institute				1			4	5		5
Center for International Exchange				2	1			3		3
Archaeological Research Office on the Campus									3	3
Global Operations Centre									1	1
Campus Planning Office									3	3
College of Medical Science									12	12
Regular Personnel	1	6 (1)	2	829	623	169	1,024	2,655	2,408	5,063

※ Counts include employees on leave status.

※ A research associate in General Affairs Department is affiliated with Committee for University Evaluation System Management.

※ () indicates the number of part-time personnel.

Undergraduate Schools

Majors

Arts and Letters

Humanities and Social Sciences

Education

Educational Science

Law

Law

Economics

Economics
Business Administration

Science

Mathematics
Physics
Astronomy and Geophysics
Chemistry
Geoenvironmental Science, Geography
Mineralogy, Petrology and Economic Geology
Biology

Majors

Medicine

Medicine
Health Sciences

Dentistry

Dentistry

Pharmaceutical Sciences

Pharmacy
Pharmaceutical Sciences

Engineering

Mechanical and Aerospace Engineering
Electrical, Information and Physics Engineering
Applied Chemistry, Chemical Engineering and Biomolecular Engineering
Materials Science and Engineering
Civil Engineering and Architecture

Agriculture

Applied Bio-Sciences
Applied Biological Chemistry

Graduate Schools

Majors

Arts and Letters

Humane Studies
Linguistic Studies
Historical Studies
Human Sciences

Education

Educational Science

Law

Law and Society (Law School)
Public Law and Policy (School of Public Policy)
Legal and Political Studies

Economics and Management

Economics and Management
Accountancy (Accounting School)

Science

Mathematics
Physics
Astronomy
Geophysics
Chemistry
Earth Science

Medicine

Medical Sciences
Disability Science

Dentistry

Dental Sciences

Pharmaceutical Sciences

Pharmaceutical Chemistry
Bio-Pharmaceutical Science
Life Science

Engineering

Mechanical Systems and Design
Nanomechanics
Aerospace Engineering
Quantum Science and Energy Engineering
Electrical and Communication Engineering
Electronic Engineering
Applied Physics
Applied Chemistry
Chemical Engineering
Biomolecular Engineering
Metallurgy
Materials Science
Materials Processing
Civil Engineering
Architecture and Building Science
Management of Science and Technology
Bioengineering and Robotics

Majors

Agricultural Science

Biological Resource Sciences
Life Science
Bioscience and Biotechnology for Future Bioindustries

International Cultural Studies

Area Studies
Intercultural Relations
Language Studies

Information Sciences

Computer and Mathematical Sciences
System Information Sciences
Human-Social Information Sciences
Applied Information Sciences

Life Sciences

Biomolecular Sciences
Developmental Biology and Neurosciences
Environmental Life Sciences

Environmental Studies

Environmental Studies

Educational Informatics Education Division

Educational Informatics

Educational Informatics Research Division

IT Education System Theory
IT Cognitive Science
IT Educational Architecture
Theory of an Open University
Theory of Comparative IT Education

Professional Graduate Schools

Law School
School of Public Policy
Accounting School



Research Institutes

Institute	Department	Mission
Institute for Materials Research (National Collaborative Research Institute)	28 divisions	Experimental and Theoretical Studies of New Materials and their applications
Institute of Development, Aging and Cancer	6 divisions	Basic and Clinical Studies of Cancer and Brain Diseases related to the aging process
Institute of Fluid Science	5 divisions	Theoretical and Experimental Studies of Fluid Flows
Research Institute of Electrical Communication (National Collaborative Research Institute)	5 divisions	Theory and Application of Intelligent Information Science and Communications
Institute of Multidisciplinary Research for Advanced Materials	5 divisions	Systematic and Futuristic Studies of a New Generation Concepts, Methodologies and Processes

Inter-Department Institutes for Education and Research

Institute	Mission
Center for Northeast Asian Studies	Referring to areas on North and East Asia, including Japan where the regional interdisciplinary and integrated studies are carried out.
Center for the Advancement of Higher Education	Plan, promote, and support research development, and to raise the level of educational knowledge and pedagogy in the universities.
The Center for Academic Resources and Archives	To collect and store scholarly materials belonging to the University, include specimens and records relating to the University's history; to preserve biological resources grown within the Botanical Gardens; and to carry out research pertaining to these scholarly materials and biological resources, thereby contributing to education and research at the University while also disseminating and making available such knowledgeable materials widely for the advancement of education in society.
Institute for International Advanced Research and Education	In cooperation with the University's various graduate schools, it conducts, plans, and supports educational research and development based on research findings in new fields created through the fusion of academic disciplines. Its aim is to create integrated knowledge and nurture young researchers who can compete internationally.
Cyclotron and Radioisotope Center	To conduct research studies in various energy fields using the cyclotron and high-level, short-lived radioisotopes, as well as to carry out training in the safe handling of radiation and radioisotopes. Interdisciplinary research is carried out in nuclear biology with an accelerator and instrumentations, as well as in radiopharmaceutical chemistry, cyclotron nuclear medicine, and radiation protection and safety control.
New Industry Creation Hatchery Center (NICHe)	To respond to society by creating new technologies and products as well as by exploring new uses and industries. Original and cutting edge research is carried out in collaboration with industry.
Center for Interdisciplinary Research	Conduct interdisciplinary studies in unexplored areas and to further internationalism by creating innovative new fields of study.
Technology Center for Research and Education Activities	Establish large-scale research facilities which contribute to the advancement of research and education. To manage these facilities in order to make them available for common use by faculty and other qualified persons, and to offer a stable supply of low-temperature liquid and providing guidance in cryogenic technology.
Information Synergy Organization	Practical research on and design and operation of cyber infrastructure based-on high-performance computing, networking and the information-related technologies to promote the use of advanced information technology in research and education.



Laboratory for Nanoelectronics and Spintronics of RIEC and Laboratories for Advanced Materials Research of IMRAM



New Industry Creation Hatchery Center (NICHe)

University Collaborating Institutions

Institution	Mission
Office of Cooperative Research and Development	Promotion of wide-ranging academic research, contribution to the creation of knowledge, and management/utilization of the research results as an university intellectual property are our mission. They contribute to the establishment of mutually beneficial collaboration between industry, academia and government, and the further development of our society as well as support for the creation of new business.
Office for Strategic Promotion of Basic Research	This office supports the advancement of research at the University through strategic and competitive fund-raising. It is also involved in the planning, collecting and disseminating of information within the university.
Center for Research Strategy and Support (CRESS)	To promote several kinds of programs that is organized for accelerate the affiliation in all of the university totally and strategically, and through these accelerations, this center will contribute to create the knowledge and promote the innovation based on the research activities.
Environment Conservation Research Institute	To protect the environment by the correct disposal of all waste products including wastewater, spent oil and other harmful waste (excluding radioactive waste) resulting from research activities conducted at this university. In addition, to conduct research on the technologies needed to deal with the different types of waste, it also develops technologies free from secondary pollution for the utilization of waste as raw chemical materials.
Center for International Exchange	To promote international exchange, by assisting in the receptions and departures of scholars and students, by supporting the development of international activities and again by assisting foreign scholars and students in their orientation classes on Japan and the Japanese educational system.
Archaeological Research Office on the Campus	Investigate and research archeological findings on campus and plan for their preservation and use.
Global Operations Centre	The aim of this center is assisting the university to become an internationally competitive educational center with world-class research and instruction. To strategically direct the university's international activities and to assure that it is suitably endowed to assume its role as a recognized member of the global academic community.
Campus Planning Office	To conduct surveys and research, accumulate materials and draft proposals relating to the faculty and of the future plans for the Tohoku University campus, and also provide expert support to committees involved in campus planning.

Biomedical Engineering Research Organization (TUBERO)

Mission	The aims of TUBERO are to bring together researchers in the fields of medicine and engineering for interdisciplinary work in biomedical engineering, and to establish the new system of personnel training. Twenty-one different research projects which are now being pursued in four different areas: biomaterials science, nanomedicine, biofunctional science, and telecommunications and information technology.
----------------	---



University Library

Number of Volumes

(as of March 31, 2006)

Classification	Types of Materials	Main Library	Medical Library	Kita-Aobayama Library	Engineering Library	Agricultural Library	Total	
Number of Volumes	Books	Japanese	1,352,770	160,280	72,857	148,875	70,678	1,805,460
		Foreign	1,096,526	255,525	286,891	168,567	59,041	1,866,550
		Total	2,449,296	415,805	359,748	317,442	129,719	3,672,010
	Periodicals	Japanese	21,696	4,939	1,845	3,522	3,021	35,023
		Foreign	16,407	9,769	6,819	4,042	1,661	38,698
		Total	38,103	14,708	8,664	7,564	4,682	73,721

Usage Statistics

(FY 2005)

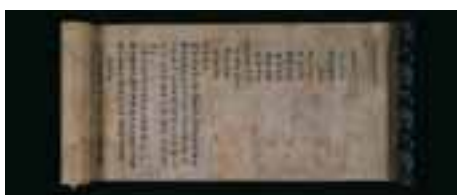
Classification	Main Library	Medical Library	Kita-Aobayama Library	Engineering Library	Agricultural Library	Total
Visitors	495,844	171,295	73,815	116,093	28,618	885,665
External Readers	18,248	1,389	256	293	128	20,314
Books for Loan	138,283	7,251	12,674	33,482	5,084	196,774
Reference Services	7,522	3,271	3,555	7,520	1,144	23,012
Information Retrieval Services	15,294	6,967	1,422	2,089	514	26,286
Literature Duplication	10,901	72,987	9,940	13,867	6,629	114,324

Collections

1. National Treasures	Shiki Kobun Hongi / Shiji Xiao Wen benji di shi v.10 (Heian Period) Ruiju kokushi v.25 (Heian Period)
2. Cherished Books (Total: 930 items)	Japanese books: 820 items (including 574 items of Kano Collection) Foreign books: 110 items
3. Major and Special Collections	Kano Collection (consisted of about 108,000 books including the above two national treasures), Kushida (Tamizo) Collection, Soseki Collection, Haseda (Taizo) Collection, Sunaga (Shigemitsu) Collection, Wada (Saichirou) Collection, Kojima (Kikuo) Collection, Orui (Noburu) Collection, Abe (Jiro) Collection, Bansui Collection, Umehara (Sueji) Collection, Ishizu (Teruji) Collection, Yajima (Genryo) Collection, Kinoshita (Akira) Collection, Kouno (Yoichi) Collection, Yanase (Yoshimoto) Collection, Ito (Nobuo) Collection, Nakano (Tadashi) Collection, Nakamura (Kichiji) Collection, Matsumoto (Kinju) Collection, Takayanagi (Shinzo) Collection, Miyata (Mitsuo) Collection, Wasan (native mathematics of Japan) Collection, The Akita archive, Documents of the Haruyama family, Wundt Collection (Wilhelm Wundt), Koeber Collection (Raphael von Koeber), Stein Collection (Friedrich Stein), Seckel Collection (Emil Seckel), Zitelmann Collection (Ernst Zitelmann), Tibetan Tripitaka (sde dge edition), Würfel Collection (Georg Würfel)



Shiki Kobun Hongi / Shiji Xiao Wen benji di shi v.10



Ruiju kokushi v.25



Soseki Sensei (Dear Soseki) by Ippei Okamoto



University Hospital

(as of May 1, 2006)

Divisions	Clinical Departments	Beds
Medicine	Internal Medicine	1,268
	Surgery	
	Obstetrics, Gynecology and Urology	
	Neurological and Psychiatric Disorders	
	Pediatrics	
	Sense Organ and Rehabilitation Medicine	
	Radiology	
Dentistry	Oral Health Enhancement	40
	Oral Medicine and Surgery	
	Oral Reconstruction	
	Rehabilitation of Oral Function	

Number of Patients

(FY 2005)

Divisions / Inpatient Treatments	Total Number of Inpatients	Average Number of Inpatients per day
Medicine	372,392	1,020.3
Dentistry	9,974	27.3
Divisions / Outpatient Treatments	Total Number of Outpatients	Average Number of Outpatients per day
Medicine	491,676	2,015.1
Dentistry	139,422	571.4

Most-advanced Medical Care

Functional electrical nerve stimulation with percutaneous implantable electrodes

Living-donor, lobar lung transplantation

Laparoscopic lymph node excision for the treatment of retroperitoneal lymph node metastasis urogenital tumors



Medical College in the 1930s and 1940s



University Hospital in the present day

Students

Introduction

Organization

Students

Finance

Major Research Projects

International Exchange

Campuses

Number of Students

(as of May 1, 2006)

Total Number

Categories	Number of Quota	Number of Students		Number of International Students included in counts			Research Students Special Auditors Special Research Students Special Students Intensive Japanese Language Program
				Japanese Government Scholarships	Private Means	Sub Total	
Undergraduate Students	9,684	10,815	(2,508)	55	71	126	285
Graduate Students (Master Course / Master's Program / Profession Degree Program)	3,676	4,175	(899)	64	237	301	251
Graduate Students (Doctoral Program)	2,922	2,870	(695)	191	286	477	
Sub Total	16,282	17,860	(4,102)	310	594	904	536
Attached School	40	39	(27)	—	—	—	—
College	20	20	(20)	—	—	—	0
Research Institutes	—	—	—	—	—	—	48
Others	—	—	—	—	—	—	17
Grand Total	16,342	17,919	(4,149)	310	594	904	601

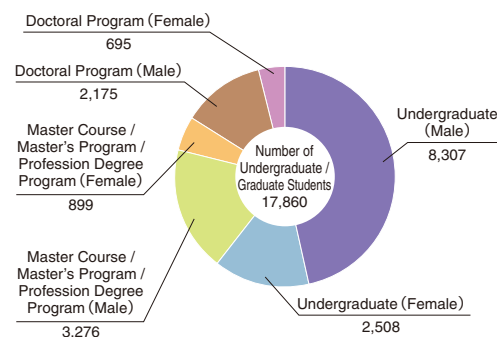
1. () indicates the number of female students included in counts.
2. "Private Means" include foreign government funds.

Undergraduate Schools

(as of May 1, 2006)

Faculties / Schools	Number of Quota	Number of Students	
Arts and Letters	840	973	(520) [11]
Education	280	316	(161) [2]
Law	640	734	(210) [3]
Economics	1,080	1,201	(270) [17]
Science	1,296	1,475	(231) [9]
Medicine	1,048	1,074	(376) [5]
Dentistry	340	342	(114) [1]
Pharmaceutical Sciences	320	350	(98) [4]
Engineering	3,240	3,692	(296) [72]
Agriculture	600	658	(232) [2]
Total	9,684	10,815	(2,508) [126]

1. () indicates the number of female students included in counts.
2. [] indicates the number of international students included in counts.



Graduate Schools

(as of May 1, 2006)

Graduate Schools	Master Course / Master's Program / Profession Degree Program				Doctoral Program			
	Number of Quota	Number of Students		Number of Quota	Number of Students			
Arts and Letters	178	184	(73) [17]	135	268	(80) [28]		
Education	80	82	(50) [2]	60	90	(45) [12]		
Law	400	315	(71) [8]	60	59	(23) [11]		
Economics and Management	180	210	(76) [57]	73	75	(27) [29]		
Science	524	532	(67) [14]	390	308	(44) [44]		
Medicine	96	100	(59) [11]	612	581	(188) [63]		
Dentistry	12	19	(14) [0]	188	165	(44) [7]		
Pharmaceutical Sciences	114	171	(59) [4]	78	71	(10) [9]		
Engineering	1,198	1,468	(119) [71]	653	638	(56) [162]		
Agricultural Sciences	194	234	(84) [4]	138	127	(27) [17]		
International Cultural Studies	96	108	(69) [49]	114	114	(69) [36]		
Information Sciences	238	308	(31) [36]	169	148	(25) [26]		
Life Sciences	212	235	(76) [7]	141	100	(27) [4]		
Environmental Studies	130	190	(41) [16]	96	109	(26) [27]		
Educational Informatics	24	19	(10) [5]	15	17	(4) [2]		
Total	3,676	4,175	(899) [301]	2,922	2,870	(695) [477]		

1. () indicates the number of female students included in counts.
2. [] indicates the number of international students included in counts.

Attached School

(as of May 1, 2006)

School	Number of Quota	Number of Enrollees	Number of Students
School of Dental Laboratory Technicians	20 x 2 years	19 (12)	39 (27)

1. () indicates the number of female students included in counts.

College of Medical Science

(as of May 1, 2006)

Course	Number of Quota	Number of Enrollees	Number of Students
Course of Maternity Nursing	20	20 (20)	20 (20)

1. () indicates the number of female students included in counts.

Result of Entrance Examination

Undergraduate Schools

(FY 2006)

Faculties / Schools		Number of Quota	Number of Applicants		Number of Registered Students	
Arts and Letters		210	719	(375)	216	(133)
Education		70	223	(108)	73	(39)
Law		160	807	(238)	165	(54)
Economics		260	1,009	(234)	264	(61)
		20	69	(23)	19	(7)
Science		324	991	(184)	355	(54)
	Medicine	100	1,054	(176)	104	(10)
Medicine	Health Sciences	144	476	(285)	144	(93)
		16	113	(45)	16	(14)
Dentistry		55	324	(108)	58	(18)
Pharmaceutical Sciences		80	466	(153)	86	(26)
Engineering		810	2,897	(243)	898	(72)
Agriculture		150	657	(227)	162	(50)
Total		2,363	9,623	(2,331)	2,525	(610)
		36	182	(68)	35	(21)

- () indicates the number of female students included in counts.
- The numbers indicated in lower lines are the 3rd year transfer students.
- () indicates the number of female students included in counts.

Graduate Schools

(FY 2006)

Graduate Schools		Number of Quota	Number of Applicants		Number of Registered Students	
Arts and Letters	Master Course / Master Program	89	131	(43)	77	(23)
	Doctoral Program	45	60	(18)	43	(13)
Education	Master Course / Master Program	40	76	(47)	38	(25)
	Doctoral Program	20	32	(16)	18	(10)
Law	Master Course / Master Program	20	26	(7)	9	(3)
	Doctoral Program	20	11	(3)	5	(2)
	Profession Degree Program	130	525	(100)	124	(32)
Economics and Management	Master Course / Master Program	50	100	(36)	45	(19)
	Doctoral Program	20	15	(7)	11	(5)
	Profession Degree Program	40	83	(20)	35	(11)
Science	Master Course / Master Program	262	359	(49)	258	(36)
	Doctoral Program	130	82	(11)	76	(11)
Medicine	Master Program	20	28	(12)	21	(10)
	Doctoral Program	144	110	(38)	101	(34)
	Master Course / Master Program	28	22	(15)	16	(11)
	Doctoral Program	12	12	(7)	12	(7)
Dentistry	Master Program	6	9	(8)	9	(8)
	Doctoral Program	47	21	(7)	20	(7)
Pharmaceutical Sciences	Master Course / Master Program	57	106	(34)	81	(28)
	Doctoral Program	26	29	(4)	29	(4)
Engineering	Master Course / Master Program	598	996	(64)	707	(45)
	Doctoral Program	217	149	(14)	138	(13)
Agricultural Science	Master Course / Master Program	97	149	(59)	121	(46)
	Doctoral Program	46	33	(10)	32	(9)
International Cultural Studies	Master Course / Master Program	48	71	(50)	42	(28)
	Doctoral Program	38	38	(23)	27	(14)
Information Sciences	Master Course / Master Program	120	207	(23)	153	(18)
	Doctoral Program	57	38	(4)	37	(4)
Life Sciences	Master Course / Master Program	106	203	(59)	105	(33)
	Doctoral Program	47	29	(7)	27	(7)
Environmental Studies	Master Course / Master Program	65	118	(25)	91	(17)
	Doctoral Program	32	28	(10)	23	(8)
Educational Informatics, Education Division	Master Course / Master Program	12	12	(5)	9	(3)
	Doctoral Program	5	4	(2)	3	(1)
Total	Master Program	26	37	(20)	30	(18)
	Doctoral Program	191	131	(45)	121	(41)
	Master Course / Master Program	1,592	2,576	(516)	1,752	(335)
	Doctoral Program	715	560	(136)	481	(108)
	Profession Degree Program	170	608	(120)	159	(43)

- () indicates the number of female students included in counts.



Number of Degrees Conferred

Bachelor's Degree

(as of March 31, 2006)

Categories	Old System	New System	
		FY 2005	Cumulative Total
Bachelor of Letters	1,277	218	8,871
Bachelor of Education	—	68	6,069
Bachelor of Law	3,844	174	10,915
Bachelor of Economics	1,446	262	11,438
Bachelor of Science	2,747	317	13,195
Bachelor of Medicine	3,290	99	5,437
Bachelor of Dentistry	—	54	2,029
Bachelor of Pharmaceutical Sciences	—	76	2,637
Bachelor of Engineering	3,953	910	38,744
Bachelor of Agriculture	620	152	7,449
Bachelor of Forestry	59	—	—
Total	17,236	2,330	106,784

Master's Degree

(as of March 31, 2006)

Graduate Schools	FY 2005	Cumulative Total
Arts and Letters	77	2,749
Education	38	864
Law	30	520
Economics and Management	54	828
Science	233	7,306
Medicine	29	268
Dentistry	5	5
Pharmaceutical Sciences	84	1,638
Engineering	670	16,960
Agricultural Science	112	2,799
International Cultural Studies	54	469
Information Sciences	127	1,558
Life Sciences	100	403
Environmental Studies	94	199
Educational Informatics, Education Division	12	33
Total	1,719	36,599

Profession Degree

(as of March 31, 2006)

Categories	FY 2005	Cumulative Total
Master of Public Policy (School of Public Policy, established in 2004)	23	24
Juris Doctor (Law School, established in 2004)	45	45
Master of Accountancy (Accounting School, established in 2005)	1	1
Total	69	70

Doctor's Degree

(as of March 31, 2006)

Graduate Schools	Old System	New System (Doctor's Course)		New System (Doctor's Thesis)	
		FY 2005	Cumulative Total	FY 2005	Cumulative Total
Arts and Letters	96	15	215	15	230
Education	—	9	81	0	108
Law	38	3	62	2	51
Economics and Management	50	19	150	2	102
Science	944	71	2,284	8	1,221
Medicine	3,715	123	2,468	21	3,389
Dentistry	—	38	392	5	191
Pharmaceutical Sciences	—	18	385	14	510
Engineering	554	179	3,643	20	2,162
Agricultural Science	152	36	871	18	712
International Cultural Studies	—	14	65	1	5
Information Sciences	—	36	381	3	47
Life Sciences	—	38	79	2	3
Environmental Studies	—	33	53	4	7
Total	5,549	632	11,129	115	8,738

Doctor's Degree ... By completing the Doctor's Course requirements or by presenting a Doctor's thesis

Old System ... 1921-1962

New System ... 1995-present



After Graduation Status

Undergraduate Schools

(as of April 1, 2006)

Categories Faculties / Schools	Number of graduates		Number of students going on to higher stage of education		Number of medical / dental students employed as interns		Number of the employed		Others	
Arts and Letters	218	(112)	47	(12)	0	(0)	128	(80)	43	(20)
Education	68	(39)	18	(13)	0	(0)	29	(15)	21	(11)
Law	174	(51)	42	(16)	0	(0)	60	(18)	72	(17)
Economics	262	(63)	22	(8)	0	(0)	187	(43)	53	(12)
Science	317	(50)	257	(36)	0	(0)	39	(10)	21	(4)
Medicine	99	(16)	1	(0)	96	(16)	0	(0)	2	(0)
Dentistry	54	(18)	0	(0)	54	(18)	0	(0)	0	(0)
Pharmaceutical Sciences	76	(29)	59	(21)	0	(0)	12	(6)	5	(2)
Engineering	910	(67)	761	(51)	0	(0)	114	(14)	35	(2)
Agriculture	152	(60)	120	(43)	0	(0)	27	(13)	5	(4)
Total	2,330	(505)	1,327	(200)	150	(34)	596	(199)	257	(72)

1. () indicates the number of female students included in counts.

2. "Others" include research students; special students; graduates preparing for the exam for National Public Service; graduates unemployed; and others.

Graduate Schools (Master Course / Master's Program)

(as of April 1, 2006)

Categories Graduate Schools	Number of graduates		Number of students going on to higher stage of education		Number of the employed		Others	
Arts and Letters	77	(39)	26	(9)	30	(18)	21	(12)
Education	38	(20)	10	(5)	22	(13)	6	(2)
Law	30	(10)	5	(2)	4	(2)	21	(6)
Economics and Management	55	(23)	9	(5)	25	(6)	21	(12)
Science	232	(35)	71	(13)	148	(21)	13	(1)
Medicine	14	(7)	10	(5)	2	(0)	2	(2)
Dentistry	5	(2)	2	(1)	3	(1)	0	(0)
Pharmaceutical Sciences	84	(23)	28	(5)	49	(17)	7	(1)
Engineering	670	(61)	90	(9)	566	(47)	14	(5)
Agricultural Science	112	(37)	20	(3)	81	(32)	11	(2)
International Cultural Studies	54	(35)	18	(10)	13	(8)	23	(17)
Information Sciences	127	(13)	21	(2)	94	(9)	12	(2)
Life Sciences	100	(37)	29	(8)	54	(22)	17	(7)
Environmental Studies	94	(11)	11	(1)	76	(8)	7	(2)
Educational Informatics	12	(5)	2	(1)	4	(1)	6	(3)
Professional Graduate Schools	68	(16)	0	(0)	24	(2)	44	(14)
Total	1,772	(374)	352	(79)	1,195	(207)	225	(88)

1. () indicates the number of female students included in counts.

2. "Others" include research students; special students; graduates preparing for the exam for National Public Service; graduates unemployed; and others.



After Graduation Status

(as of April 1, 2006)

Graduate Schools (Doctoral Program)

Categories	Number of graduates	Number of students going on to higher stage of education	Number of the employed	Others	Number of postdoctoral fellows included in counts
Graduate Schools					
Arts and Letters	15 (9)	0 (0)	4 (2)	11 (7)	2 (1)
Education	9 (5)	0 (0)	7 (3)	2 (2)	0 (0)
Law	3 (1)	0 (0)	2 (0)	1 (1)	0 (0)
Economics and Management	19 (3)	0 (0)	13 (2)	6 (1)	0 (0)
Science	71 (10)	0 (0)	24 (3)	47 (7)	8 (2)
Medicine	5 (3)	0 (0)	3 (1)	2 (2)	0 (0)
Dentistry	—	—	—	—	—
Pharmaceutical Sciences	18 (5)	0 (0)	12 (3)	6 (2)	0 (0)
Engineering	173 (13)	0 (0)	130 (8)	43 (5)	16 (1)
Agricultural Science	36 (8)	0 (0)	14 (2)	22 (6)	2 (1)
International Cultural Studies	14 (6)	0 (0)	12 (4)	2 (2)	0 (0)
Information Sciences	36 (3)	0 (0)	18 (0)	18 (3)	0 (0)
Life Sciences	38 (11)	0 (0)	11 (3)	27 (8)	9 (3)
Environmental Studies	33 (4)	0 (0)	24 (1)	9 (3)	2 (0)
Total	470 (81)	0 (0)	274 (32)	196 (49)	39 (8)

1. () indicates the number of female students included in counts.

2. "Others" include research students; special students; graduates preparing for the exam for National Public Service; graduates unemployed; and others.

(as of April 1, 2006)

Graduate School (Master's Program)

Categories	Number of graduates	Number of students going on to higher stage of education	Number of the employed	Others
Graduate Schools				
Medicine	15 (6)	6 (2)	9 (4)	0
Total	15 (6)	6 (2)	9 (4)	0

1. () indicates the number of female students included in counts.

2. "Others" include research students; special students; graduates preparing for the exam for National Public Service; graduates unemployed; and others.

(as of April 1, 2006)

Graduate Schools (Doctoral Program)

Categories	Number of graduates	Number of students going on to higher stage of education	Number of medical / dental students employed as interns	Number of the employed	Others	Number of postdoctoral fellows included in counts
Graduate Schools						
Medicine	118 (27)	2	2	93 (16)	21 (11)	5 (2)
Dentistry	38 (10)	0	0	30 (8)	8 (2)	1 (1)
Total	156 (37)	2	2	123 (24)	29 (13)	6 (3)

1. () indicates the number of female students included in counts.

2. "Others" include research students; special students; graduates preparing for the exam for National Public Service; graduates unemployed; and others.





Finance

Introduction

Organization

Students

Finance

Major Research Projects

International Exchange

Campuses



Summary of Financial Statements of FY2005

(March 31, 2006, million yen)

Balance Sheet

Assets	
Fixed Assets	297,478
Land	133,685
Buildings and structures	108,126
Machinery and equipment	30,012
Books and collections	24,618
Vessels and vehicles	170
Construction in progress	163
Others	702
Current Assets	38,411
Cash and cash equivalents	32,978
Accounts receivable	4,549
Inventories	883
Total Assets	335,890

Liabilities	
Long-term Liabilities	101,635
Accumulated depreciation	45,290
Long-term debt	56,345
Current Liabilities	36,431
Main liabilities	11,531
Current portion of long-term debt	3,456
Accounts payable	20,038
Others	1,404
Total Liabilities	138,067

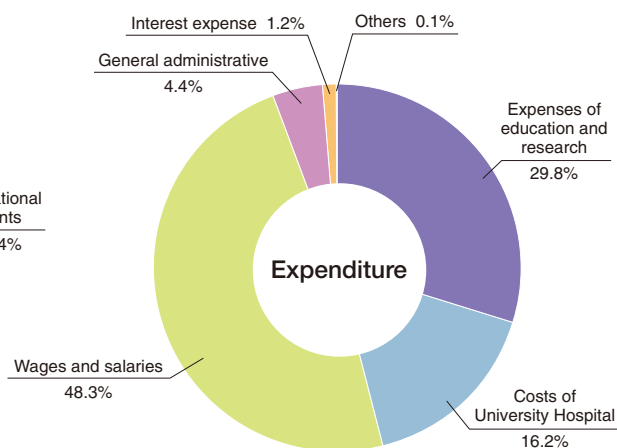
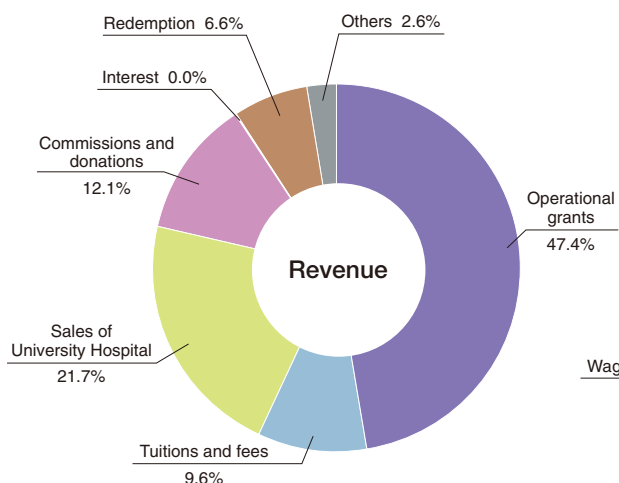
Equity	
Capital	180,269
Capital surplus	12,809
Retained earnings	4,743
Total Equity	197,822

Total Liabilities and Equity	335,890
-------------------------------------	----------------

Income Statement

(April 1, 2005 - March 31, 2006, million yen)

Revenues	98,832
Operational grants	51,103
Tuitions and fees	10,374
Sales of University Hospital	23,421
Commissions and donations	13,028
Others	904
Costs and Expenses	104,403
Expenses of education and research	31,518
Costs of University Hospital	17,162
Wages and salaries	51,073
General administrative	4,649
Operating Income	▲ 5,571
Other Income	8,985
Interest	5
Redemption	7,105
Others	1,874
Other Expenses and Losses	1,407
Interest expense	1,300
Others	106
Net Income	2,007



Research Funds

Grants-in-Aid for Scientific Research

(FY 2005)

Categories	Number of Projects	Amount of Grants (thousand yen)		
		Direct Expenses	Indirect Expenses	Total
Specially Promoted Research	9	935,800	280,740	1,216,540
Scientific Research in Priority Areas	200	1,703,506	—	1,703,506
Scientific Research (S) or (A) or (B) or (C)	848	3,824,421	480,912	4,305,333
Exploratory Research	235	360,341	—	360,341
Young Scientists (A) or (B)	401	903,489	117,510	1,020,999
Special Purposes	1	18,800	—	18,800
Creative Scientific Research	8	572,500	171,750	744,250
Total	1,702	8,318,857	1,050,912	9,369,769

Donations and Commissioned Research

(FY 2005)

Categories	Number of Recipients	Amount Received (thousand yen)
Donations	2,437	4,420,443
Joint Research with Industry	479	1,826,814
Funds for Commissioned Research	General Funds	293
	Competitive Funds	190
	Sub Total	483
Sub Total	962	7,358,066
Total	3,399	13,605,323

Other Competitive Funds

(FY 2005)

Categories	Number of Projects	Amount of Funds (thousand yen)		
		Direct Expenses	Indirect Expenses	Total
21st Century COE Program	13	1,879,900	74,700	1,954,600
Research Program on Development of Innovative Technology (JST)	1	8,500	2,550	11,050
Industrial Technology Research and Development Projects (NEDO)	35	362,318	108,695	471,013
Health and Labour Sciences Research Grant (MHLW)	32	557,136	49,477	606,613
Grant-in-Aid for Waste Management (MOE)	3	21,843	0	21,843
Subsidy for Promoting University Reform (MEXT)	19	109,575	0	109,575
Grant-in-Aid for Cancer Research (MHLW)	1	13,282	0	13,282
Subsidy for Innovative and Viable Nuclear Energy Technology Development (METI)	1	118,253	11,811	130,064
Total	105	3,070,807	247,233	3,318,040

Notes:

JST: Japan Science and Technology Agency
 NEDO: New Energy and Industrial Technology Development Organization
 MHLW: Ministry of Health, Labour and Welfare
 MOE: Ministry of the Environment
 MEXT: Ministry of Education, Culture, Sports, Science and Technology
 METI: Ministry of Economy, Trade and Industry



Land and Buildings

(Unit:m)

Area / Size			Land			Building		
			Owned	Rented	Total	Owned	Rented	Total
Within Miyagi Prefecture	Within Sendai City	Katahira	237,532	31	237,563	152,921	0	152,921
		Komegafukuro	3,231	0	3,231	548	0	548
		Kawauchi / Aobayama	1,587,073	27,712	1,614,785	410,840	0	410,840
		Seiryō	180,047	59	180,106	270,053	0	270,053
		Amamiya	92,746	0	92,746	31,297	0	31,297
		Sanjo	70,686	0	70,686	11,980	0	11,980
		Tomizawa	113,877	0	113,877	8,575	0	8,575
		Hyojogawara	18,668	0	18,668	781	0	781
		Miyagi	0	399	399	26	0	26
		Akiu	0	4	4	0	20	20
		Koeji	0	2	2	0	0	0
		Yagiyama	12,810	0	12,810	1,520	0	1,520
		Student Residence	44,212	0	44,212	15,952	0	15,952
		Staff Residence	80,834	0	80,834	43,152	0	43,152
		Sub Total	2,441,716	28,207	2,469,923	947,645	20	947,665
	Outside Sendai City	Zao	0	30,287	30,287	399	0	399
		Shichigahama	0	528	528	355	0	355
		Onagawa / Oshika	23,463	43,338	66,801	1,922	0	1,922
		Kashimadai	10,077	0	10,077	270	0	270
		Naruko / Kawatabi	18,541,862	1,337	18,543,199	18,696	0	18,696
		Natori	1,863	454	2,317	1,050	0	1,050
		Kamafusa	0	144	144	0	5	5
		Kogota	0	1,038	1,038	19	0	19
		Kesenuma	0	112	112	0	0	0
		Yoneyama	0	1,600	1,600	101	0	101
		Marumori	0	181	181	6	0	6
		Wakayanagi	0	100	100	12	0	12
Sub Total	18,582,676	80,254	18,662,930	24,346	5	24,351		
Total			21,024,392	108,461	21,132,853	971,991	25	972,016
Outside Miyagi Prefecture	Aomori Prefecture	28,505	76,183	104,688	2,658	0	2,658	
	Akita Prefecture	1,049	6,602	7,651	932	0	932	
	Yamagata Prefecture	0	1,452	1,452	298	0	298	
	Iwate Prefecture	10,012	19,294	29,306	934	0	934	
	Fukushima Prefecture	990	25,879	26,869	362	0	362	
	Niigata Prefecture	0	303	303	6	0	6	
	Saitama Prefecture	660	1	661	739	0	739	
	Ibaraki Prefecture	4,541	12,161	16,702	6,086	0	6,086	
	Tochigi Prefecture	0	25	25	0	0	0	
	Gifu Prefecture	0	375	375	216	0	216	
	Total	45,757	142,275	188,032	12,231	0	12,231	
	Grand Total			21,070,149	250,736	21,320,885	984,222	25

Major Research Projects

Campuses

International Exchange

Major Research Projects

Finance

Students

Organization

Introduction

The 21st Century Center of Excellence Program (COE Program)

The COE Program is a new project introduced in 2002 by Japan's Ministry of Education, Culture, Sports, Science and Technology. It's aimed to promote establishment of the world's top-class universities renowned for their vitality and level of international competitiveness in Japan. At this end, in order to enhance educational and research standards in this country and to foster creative leadership for the international academic community, the COE Program facilitates the development of a competitive academic environment, and supports the establishment of international research and educational centers in all fields of study.

FY 2002

Program Leader	Research Fields	Program Title	Contents
Life Sciences Masaaki Sato	Human Biomedical Engineering	Future Medical Engineering based on Bio-nanotechnology	<p>When we visit hospitals for treatment or medication, we find ourselves surrounded by various testing and therapeutic equipment. These devices and equipment are achievements in the field of human biomedical engineering based on the latest engineering technologies and contribute to the health of our community. By applying high-precision and sophisticated biological nanotechnology, this COE Program aims to develop technologies for the increasingly growing elderly population enabling senior citizens to lead healthy lives, as well as technologies that can contribute to medical care and treatment. We are also involved in such research and technological development aimed to foster the young researchers.</p>
URL: http://www.fmbe.coe.tohoku.ac.jp/			
Chemistry and Material Sciences Yoshinori Yamamoto	Multidisciplinary Chemistry	Unexplored Chemistry: Giant Molecules and Complex Systems	<p>We have entered an age where research is focused upon unexplored giant molecules and analysis of unexamined complex systems; we advance from the age in which synthesis, analysis, expression of functions, and theory establishment of normal molecules (below that of 1 nm size) is carried out. The aim of this program is to conduct research including the analysis, construction, and expression of functions of complex systems such as in giant molecules and complicated molecular associates, and to also systemize the area of unexplored giant-molecule chemistry for practical application.</p> <p>We have, for the first time in the world, succeeded in completely synthesizing ciguatoxin, and further accomplished total synthesis of gambrierol and brevetoxin B, both of which are natural giant marine molecules (3 nm) and toxins produced by fish.</p> <p>Every year, more than ten thousand people in the tropical and sub-tropical regions receive injury from these marine toxins. It is our hope that the success in the total synthesis of the molecules will facilitate in the treatment of people who are affected by the poisonous fish and the development of those medical kits.</p>
URL: http://www.chem.tohoku.ac.jp/COE/			
Chemistry and Material Sciences Akihisa Inoue	Materials Science	International Center of Research & Education for Materials	<p>Our aim is to develop new advanced functional and high-performance materials while clarifying mechanisms by which properties appear. These newly developed materials with artificially designed structures are created by highly sophisticated technology in nanostructure control, material processing under extreme conditions, nanohybridization, nanofabrication, ultra-thin film processing, etc. This center is determined to recruit young vigorous researchers who are willing to take on the challenge of studying unexplored fields of materials science and also actively promote and facilitate exploratory research based on unique and innovative ideas of young researchers in collaboration with promotion members.</p>
URL: http://21coe.jp/index-e.html			
Information Sciences, Electrical and Electronic Engineering Tatsuo Uchida	Electrical and Electronic Engineering	System Construction of Global-Network Oriented Information Electronics	<p>Through fusion of Nanotechnology (NT) and Information communication technology (IT), we can apply fundamental research of materials, processes, and evaluation, etc. to applied research of cutting-edge devices and systems to create original scientific technologies leading to the direct support and reinforcement of international competitive power, establishing a prominent research and education center in the world. Through such activities, we aim to take the initiative in the fields of the next-generation network information home electronics and mobile communications which are expected to be the main global "battlefield" for the next ten years, establishing the basis for the next-generation information electronics systems for the start of an era beginning 10 years from now and beyond.</p>
URL: http://www.ecei.tohoku.ac.jp/21coe/e/index.html			
Humanities Kaoru Horie	Language Sciences	Strategic and Education Center for an Integrated Approach to Language and Cognition	<p>What is going on in a human brain when one is speaking or trying to comprehend what is being uttered? This fundamental question remained unanswered for many years. An "Integrated Approach to Language, Brain and Cognition" uncovers the inner working mechanism of our brain by employing functional Magnetic Resonance Imaging (fMRI) and visualizing which part of our brain is working when we produce and comprehend utterances. This study will contribute to improvements in rehabilitation therapies for speech disorders and help prevent age-related speech disorders by training and keeping our brain in good shape. It will also facilitate the development of efficient foreign language learning methods and may even lead to the development of a robot that can understand language. A collaborative team of researchers in linguistic sciences from various subdisciplines including linguistics, brain sciences, psychology, and engineering, closely work together to reveal "language in the brain".</p>
URL: http://www.lbc21.jp/index_e.html			

Total: 5 programs

FY 2003

Program Leader	Research Fields	Program Title	Contents
Medical Sciences Kazuo Sugamura	General Medical Sciences	Center for Innovative Therapeutic Development for Common Diseases	Our aim is to cure "signal transduction diseases" caused by abnormalities in the signal transduction system, including immunologic diseases, cancer, metabolic diseases such as diabetes, and neurodegenerative diseases. Combining fundamental medical science and clinical science, an organically integrated series of research was carried out to investigate the molecular mechanisms responsible for the onset of signal transduction diseases, in order to develop new treatments. Through these studies, we hope to foster world-class researchers in the area of medicine and life sciences, as well as form an advanced treatment center for signal transduction diseases.
URL: http://www.med.tohoku.ac.jp/sugamuraco/			
Mathematics, Physics, and Earth Sciences Osamu Hashimoto	Physics	Exploring New Science by Bridging Particle-Matter Hierarchy	The program intends to establish an international center of excellence for education and research by exploring particle-, nuclear-, condensed matter- and astro-physics as well as interdisciplinary fields including mathematics. Thereby we aim at unified understanding of space evolution process and hierarchical structure of the universe. We explore new research fields of science by taking elementary particles, nuclei, atoms, molecules, stars, and galaxies formed with evolution of space since BIG BANG as the particle-matter hierarchy. Based upon research belonging to each hierarchy, we conduct bilateral educational programs in collaboration with overseas institutions in addition to domestic educational programs. By bridging particle-matter hierarchy in this way, we promote understanding the physical world, and contribute to the intellectual assets for mankind.
URL: http://www.phys.tohoku.ac.jp/coe/index-e.html			
Mathematics, Physics, and Earth Sciences Eiji Ohtani	Earth and Planetary Science	Advanced Science and Technology Center for the Dynamic Earth	We aim to clarify the evolution of the earth, recognizing that changes occurring in vast space and wide time scale phenomena of the earth's fluctuations as a sequence of precursory events, catastrophic change, relaxation, and recovery. In particular, we develop unique, state-of-the-art earth science technologies to investigate dynamics of the earth, including the core and mantle dynamics, seismic and volcanic activities, climate changes, the solar and terrestrial system, as well as the assessment of effects of impacts on small celestial bodies during the earth evolution. At the same time, we aim to foster young creative research leaders who can play an active role in the international science community, have a flexible capability to respond to the current needs of science and technology, and possess outstanding skills of technical development and various field works.
URL: http://www.21coe.geophys.tohoku.ac.jp/index-e.htm			
Mechanical, Civil, Construction and Other Engineering Tetsuo Shoji	Mechanical Engineering	The Exploration of the Frontiers of Mechanical Science Based on Nanotechnology	We establish a new academic field, "Mechanical Science based on Nanotechnology," to satisfy the social demands for the functional and structural designs for next-generation machines through the scientific rationale of nano-scale. We also establish a world-leading research and education center of mechanical science by "Double-spiral research and education programs," that enables doctoral students and young researchers to go through both the interdisciplinary and international research activities and to foster their serendipity and leadership.
URL: http://pm.mech.tohoku.ac.jp/21COE/index.htm			
Mechanical, Civil, Construction and Other Engineering Shigenao Maruyama	General Engineering	International COE of Flow Dynamics	Our studies involve a variety of spatiotemporal flow dynamics from the nano scale, which identifies the movements of atoms and molecules, to the mega scale, which targets on the earth and space. We aim to clarify the flow mechanism and create the functions which lead to an effective use of force and energy, which contributes to resolving the 21st century problems related to the environment, energy, and life. As well as fostering human resources in leadership it plays an active role in global scenes through mutual internship overseas, educational programs focused upon individual talent, and in the international liaison offices.
URL: http://www.ifs.tohoku.ac.jp/21coe/index_E.html			
Social Sciences Yoshimichi Sato	Sociology	Center for the Study of Social Stratification and Inequality	When society was poor, it was believed that once society became affluent, inequality would disappear. However, even in affluent modern society, various inequalities such as educational, career, and gender disparities still exist. Why do they exist? We are exploring this puzzle from the viewpoint of social science at our center. Furthermore, we are extending our research to the investigation of desirable "fair society."
URL: http://www.sal.tohoku.ac.jp/coe/index-en.html			
Social Sciences Miyoko Tsujimura	Law and Politics	Gender Law and Policy in the Gender Equal Society	We focus upon the legal and political scientific research of theoretical problems on the gender-equal societies promoted by Japan and the world in the 21st century. We promote the global dissemination of research study and educational accomplishments of related gender laws and policies and also encourage the applied research of policy implementations in collaboration with numerous academic institutions, local governments and bar associations in Japan and around the world.
URL: http://www.law.tohoku.ac.jp/COE/			

Total: 7 programs

Introduction

Organization

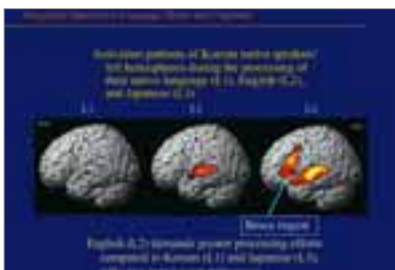
Students

Finance

Major Research Projects

International Exchange

Campuses



Research Programs

FY 2004

Program Leader	Research Fields	Program Title	Contents
Innovative Academic Field Yutaka Imai	Clinical Pharmacology and Therapeutics	Comprehensive Research and Education Center for Planning of Drug Development and Clinical Evaluation	For a certain drug to become useful in the health and welfare of mankind, it must pass through various processes, starting from the fundamental science of drug development to clinical application in humans. In particular, a drug in the clinical application requires the accumulations and integration of knowledge and experience covering the ethics and economics in addition to its medical and pharmaceutical values. This center fosters professionals with knowledge and experience, and the aims for establishing an academic research organization capable of proposing ideas for clinical development of drug and management for drug development and evaluation.

URL: http://www.crescendo.pharm.tohoku.ac.jp/index_e.html

Total: 1 program

Tohoku University Biomedical Engineering Research Organization (TUBERO)

URL: <http://www.tubero.tohoku.ac.jp/>

In 2003 a research grant, the Special Coordination Funds for Promoting Science and Technology of the Ministry of Education, Culture, Sports, Science and Technology was awarded to Tohoku University for establishment of center for research in advanced biomedical engineering which was inaugurated as the Tohoku University Biomedical Engineering Research Organization (TUBERO).

TUBERO aims to develop new biomedical engineering treatments which contribute to enhance the QOL in patients, developing interdisciplinary research systems integrating life science with the engineering areas. As a main player in revolutionizing systems and awareness, TUBERO will become a global center in biomedical engineering.

Biomaterials Science

The area of research is in the development of highly functional and safe biomaterials which are made of metals, ceramics and/or polymers for use in surgical and dental field. The applications of new materials such as in therapeutic instruments, bio-tissue regeneration, less-invasive measuring instruments are being investigated.

Nanomedicine

This division aims at (1) the compactification of medical devices and sensors for implantation, (2) clarification of the precise function from cell to whole body, and (3) development of a functional measurement system, therapeutic method, and functional regenerative technique. The tasks in the development of bio-measuring sensors, therapeutic method of diabetes, application of shock waves to treatments, development of artificial organs such as artificial anus, artificial heart, and that of a compact heart-lung machine, are the selected targets in this division.

Biofunctional Science

Based on a thorough consideration of the dynamic in-vivo environment, we would elucidate on the structures and functions of protein molecules and cells which are the basic components of living tissues and organs using advanced technologies such as in gene analysis and nano-micro machining technology. In addition, the medical engineering technology to regenerate tissues and organs by transduction of protein molecules and cells into the body and the translational techniques for clinical application are being developed.

Telecommunications and Information Technology

This division covers research topics in (1) the application of telecommunications technology in medical treatment, (2) the visualization of live body information under medical treatment and diagnosis and (3) the medical application of management technology.



Education Programs

Tohoku University promotes the following educational programs with support from the government.

Support Program for Distinctive University Education

The Ministry of Education, Culture, Sports, Science and Technology has since 2003, implemented the Support Program for Distinctive University Education to review the efforts of universities and junior colleges in Japan. They select the most outstanding and distinctive programs which contribute to the improvement of education and encourage their initiatives for the improvement of higher education by providing information to the society at large.

Year	Program	Contents
FY2003 - FY2006	Educational Program for the Development of Human Resources with International Competence	Administers three programs – (1) a team-based engineering design course, (2) a program for collaboration with foreign universities, and (3) an international university networking program—aimed at developing capable personnel with the ability to pursue professional issues, having a talent and the capacity to compete internationally for international cooperation, with all the qualities essential for those active in the international stage and also able to play a leadership role in our own society.
FY2005 - FY2008	Nurturing Natural Understanding and Logical Thinking through Interdisciplinary Scientific Experiments	Aimed to design and conduct “interdisciplinary scientific experiments” on a completely new base of thinking whereby “people can approach the same conclusion experimentally from different angles and learn to logically analyze and describe complex natural phenomena,” in contrast to traditional approaches that separate science into physics, chemistry, biology, geology, etc.

Initiative for Attractive Education in Graduate Schools

This Initiative selectively supports educational efforts by the graduate schools to nurture motivated and creative researchers with aims of strengthening the capabilities to train creative young researchers.

Year	Field	Program	Contents
FY2005 - FY2006	Humanities	Program for Fostering Researchers and Educators in Language	Focusing on the field of Applied Japanese Linguistics, the aim of the program is to foster researchers and educators in language who oversee the Language Education Program with “broad perspective”, “higher knowledge and skills grounded in practices” as well as “global mind and flexibility”.
FY2005 - FY2006	Science and Technology	Program for the Development of Young Internationally-Minded Researchers (Young Brains 21)	The aim is to nurture an international outlook in young researchers at work in universities and corporations.
FY2005 - FY2006	Science and Technology	Exploring Aerospace Frontiers through Flight Testing	Aims are to nurture world-class, project-oriented engineers and researchers through the “Flight Tests” experiences of rocket launches and/or student-build aircrafts.
FY2005 - FY2006	Science and Technology	An International Educational Initiative Program for Bio-nano Electronics	Aims are to nurture professionals, who play in an active international role and works in “the academic fields that affects the quantum of ‘bio-science’ a leap in the science of nano-electronics” it also educates as well as guides such professionals.

Support Program for Professional Graduate School Formation

This program is very selective in supporting pacesetting efforts to forge partnerships with related industry and their professional associations as well as businesses for raising the quality of education tailored to the human-resources needed in the specific fields. It seeks to raise the level of education in professional graduate schools that are expected to play a central role in the development of highly specialized professionals to bridge the gap between theory and practical application and effectively nurture specialized professionalism in Japan.

Year	Program	Contents
FY2005 - FY2006	Raising the Curriculum Quality of Accounting School's to International Levels	Aims are to provide useful information in order to train competent accounting professionals and for raising the curriculum quality of Accounting School's to international levels.

Long Term Internship Program for Graduate Students

Under this plan, students who already possess a certain level of expertise, are publicly solicited and implemented in joint projects between universities and corporations. They target on developing and carrying out programs centered on “hands-on” training within the industry and nurture professionals who can play a central role in a variety of research fields and business activities.

Year	Program	Contents
FY2005 - FY2009	Education Program for the Development of “Green Steel”	Students are sent to steel companies for research, oriented in the development of “green steel” (i.e., earth-friendly steel materials), and receive hands-on training in nurturing their skills, abilities, and values needed in the planning and building of new technological fields and framework that promises great benefits to the society.

Initiatives for Distinctive Education

This is an extra-curricular course for undergraduate and graduate students aimed at enhancing practical English communication skills.

Year	Program	Contents
FY2005 -	Practical English Course	This course, taught by native instructors, will help students further develop English communicative abilities required in academic and social situations through activities including discussions and oral presentations.

Endowed Chairs and Research Divisions

Endowed chairs and research divisions were established to facilitate and enhance the research and education at Tohoku University through contributions from businesses and other entities. Endowed chairs were organized at the graduate schools and endowed research divisions were organized at the research institutes as listed below.

Endowed Chairs

Year	Graduate School	Chair	Duration
FY 2006 (Continued)	Graduate School of Medicine	Advanced Biological Sciences for Regeneration (Kotobiken Medical Laboratories)	01/06/06-31/05/09
FY 2006	Graduate School of Dentistry	Department of Applied Dental Pharmacology	01/04/06-31/03/08
FY 2006	Graduate School of Science	Laboratory of Molecular Transformation (Sanalloy Industry Co., Ltd.)	01/04/06-31/03/09
FY 2006 (Continued)	Graduate School of Engineering	Advanced Power Engineering Laboratory (Tohoku Electric Power Co., Inc.)	01/04/06-31/03/09
FY 2006 (Continued)	Graduate School of Agricultural Science	Laboratory of Terahertz Bioengineering (Takemoto Oil & Fat, Co., Ltd; Mizkan Co., Ltd.)	01/04/06-31/03/09
FY 2006	Graduate School of Information Sciences	Advanced Information Exchange Technology (KDDI Corporation)	01/04/06-31/03/09
FY 2006 (Continued)	Graduate School of Environmental Studies	Control of Environmental Materials (Dowa Mining Co., Ltd.)	01/04/06-31/03/08
FY 2005	Graduate School of Medicine	Department of Geriatric Behavioral Neurology	01/11/05-31/10/08
FY 2005	Graduate School of Medicine	Local Medical System (LOMS) (Miyagi Prefecture)	01/06/05-31/03/08
FY 2005	Graduate School of Medicine	Hematopathology	01/04/05-31/03/07
FY 2005	Graduate School of Medicine	Research Division of Dialysis and Chronic Kidney Disease (Astellas Pharma Inc.)	01/04/05-31/03/10
FY 2005	Graduate School of Engineering	Combinatorial Computational Chemistry	01/04/05-31/03/08
FY 2003	Graduate School of Medicine	Geriatric and Complementary Medicine (Tsumura & Co.), Center for Asian Traditional Medicine Research	01/10/03-30/09/06
FY 2003	Graduate School of Pharmaceutical Sciences	Planning for Drug Development and Clinical Evaluation	01/04/03-31/03/08

Endowed Research Divisions

Year	Institute / Center	Research Division	Duration
FY 2006 (Continued)	Institute of Development, Aging and Cancer	Division of Medical Engineering and Clinical Investigation (Fukuda Denshi Co., Ltd.)	01/04/06-31/03/08
FY 2006 (Continued)	New Industry Creation Hatchery Center	Research Department of Future Life Particle Interaction Engineering Creation	01/04/06-31/03/08
FY 2006	Center for Interdisciplinary Research	Laboratory for Development of Fundamental Technology for GaN-based Devices	01/04/06-31/03/09
FY 2006	Institute of Multidisciplinary Research for Advanced Materials	Division of Organic Nanocrystal Science and Technology	01/04/06-31/03/09
FY 2005 (Continued)	New Industry Creation Hatchery Center	Research Department of Future Information Industry Creation	01/04/05-31/03/08
FY 2005 (Continued)	Institute of Multidisciplinary Research for Advanced Materials	Division of Futuristic Crystal Chemistry and Engineering	01/04/05-31/03/07
FY 2004	Graduate School of Engineering	Division of Advanced Electric Power Research (Tohoku Electric Power Co., Inc.)	01/07/04-31/03/07
FY 2004	Research Institute of Electrical Communication	Next-Generation Information Storage (Hitachi, Ltd.)	01/04/04-31/03/07
FY 2004	Institute for Materials Research	Nano-Metallurgy for High Temperature Metals	01/04/04-31/03/07
FY 2003	Institute of Fluid Science	Advanced Technology Division for Environment and Energy (Keihin Corporation)	01/12/03-30/11/06



Cooperation with Industry

Joint Research Projects with Industry

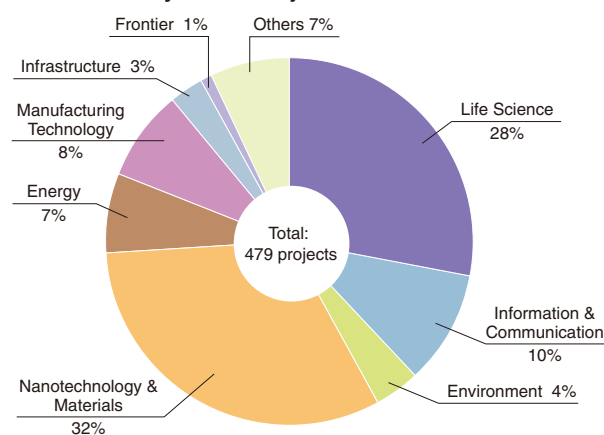
Fiscal Year	No. of Projects	Amount of Money (Unit: million yen)
1999	123	397
2000	140	551
2001	187	631
2002	233	889
2003	284	1,129
2004	392	1,675
2005	479	1,827

Commissioned Research

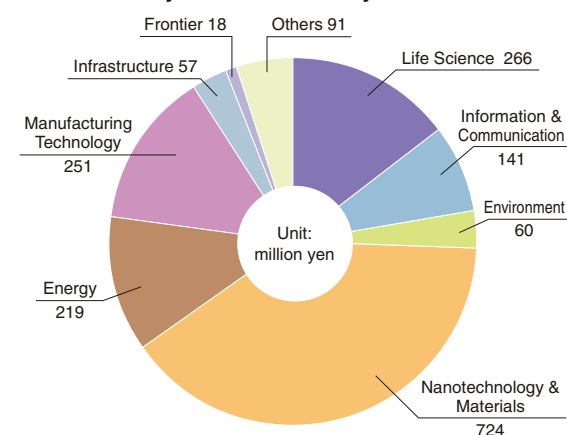
Fiscal Year	No. of Projects	Amount of Money (Unit: million yen)
1999	369	3,272
2000	396	3,775
2001	332	2,517
2002	374	3,910
2003	373	3,450
2004	456	6,149
2005	483	7,358

Joint Research Projects with Industry (FY 2005)

〈Breakdown by No. of Projects〉



〈Breakdown by Amount of Money〉



Intellectual Properties

In order to utilize technology effectively in society, Tohoku University actively promotes academic-industrial alliances in collaboration with Tohoku Technoarch Co., Ltd. established in 1998, which is a Technology Licensing Organization (TLO) and aims to assist patents and technology transfer activities owned by academic researchers in the Tohoku District. After April 2004, all the national universities in Japan became incorporated bodies, and the attribution from intellectual properties became that of the universities. The University then adopted the following policy for royalty distribution: 30% (higher limit) to the inventor; 30% to a University account for the inventor to support his/her research; and 40% to the University Administration. Up to the present, Tohoku University has obtained 79 national patents and 11 international patents including 6 US patents, and its royalty income is increasing year by year. The latest statistics on intellectual properties at Tohoku University are as follows.

Intellectual Properties at Tohoku University (FY2005)	
National Applications Filed	528
International Applications Filed *	63
National Patents Awarded	9
International Patents Awarded	3
No. of Licenses & Options Yielding Royalty	48
Royalty Income (unit: thousand yen)	10,967

* Tohoku University generally adopts the system of the Patent Cooperation Treaty (PCT), a 1970 international constitution for properties, to apply for its international applications.

Policy on Collaboration with Industry

The University's third basic mission which comes after education and academic research is contributing to society. We strive actively as a research-intensive university to return the benefits of knowledge accumulated through research and contribute them to the welfare and development of human society.

Establishing partnerships with industry and other sectors is one of the important means of delivering the benefits of knowledge to society and accordingly, Tohoku University must enhance its efforts to forge future alliances.

At this end, Tohoku University resolves in carrying out the following major four activities:

1. Increase the added social value of the University's research and education by actively transferring their scientific and technological achievements to industry and the other sectors, steadfast to the University's founding principles of "Research First" and "Practical-Oriented Research and Education."
2. Build an organizational structure for utilizing products of intellectual activity at the University and contributing to global competitiveness of Japanese industry through university-industry partnerships.
3. Effectively promote activities oriented in the collaboration with industry which contributes to society and the development of Japan's economy.
4. Develop the ongoing partnerships with local industry and local government.

Cooperation with Community

Science Café

The Science Café provides an opportunity, for the high school students and others, to chat over a cup of coffee with and listen to the scientists carry on about their advanced studies and to see the fun in science, and to understand how it contributes to society.

Date	Theme
August 26, 2005	A Discovery of Transient Luminous Events above Thunderclouds
September 20, 2005	Neutrino Research at a Very Exciting Stage! – The Dawn of Neutrino Geoscience
October 3, 2005	Live Relay of Annular Eclipse from Madrid, Spain
October 17, 2005	Tremendous Violence of Natural Disaster – The Great Sumatra Earthquake
November 21, 2005	A New Frontier of Earthquake Prediction Research
December 9, 2005	What is Media Literacy? – Relationships between You and Media
January 13, 2006	Current Situation of Avian Influenza and a Potential Risk of Influenza Pandemic
January 27, 2006	Mathematics is interesting! – The Principle for Determining Shapes in Nature
February 17, 2006	What are Stresses? – Latest Achievements in Brain Science
March 17, 2006	A New Frontiers of Genetic Medicine – Genes for Design of Our Personal Bodies



Innovation Fair

Date	Contents	Venue
February 7, 2006	Exhibits and presentations introduce Tohoku University's original research in the fields of Materials Science, Medicine, Bioscience, Medical Engineering, Intelligent Systems, Environmental Science, and Electronics.	Akasaka Prince Hotel, Tokyo

Extention Courses

Tohoku University is constantly making efforts to play the leading roles in educational and academic activities in the Tohoku District. Meeting the community's needs, it provides extension courses and public lectures for lifelong learning of citizens. In FY2005, the University organized 47 extension courses including on-demand high school classes and 6 public lectures which gained a high reputation from various academic fields. Tohoku University has continued these educational activities made understandable for the public to strengthen cooperation with community and for the purpose of disseminating information. As a result of these highly motivated activities, Tohoku University secures its position as a highly appraised university in society.

Citations

Tohoku University ranks amongst the highest in quality of universities in the world. According to the ISI Thomson Corporation Database, Essential Science Indicators (ESI), investigates citations in scientific papers of the past 10 years and then ranks their data by fields, countries and institutions. The Database serves as an indicator of evaluation in research of each institution as well as listing the latest information on scientific research. The research findings of Tohoku University were highly evaluated in the international academic community and found to contribute to the global society in the various fields of science.

Field Rankings for Tohoku University Sorted by Citations

(as of October 1, 2006)

National Ranking	International Ranking	Field	Papers	Citations	Citations Per Paper
1	2	Materials Science	4,787	26,926	5.62
2	9	Physics	10,399	99,939	9.61
5	20	Chemistry	6,015	58,299	9.69
2	39	Engineering	3,126	11,140	3.56
4	69	All Fields	38,327	331,594	8.65

Source: ISI Essential Science IndicatorsSM, January 1, 1996 - June 30, 2006

International Exchange

Introduction

Organization

Students

Finance

Major Research Projects

International Exchange

Campuses

Agreement on the University Level

United Kingdom

- Imperial College of Science, Technology and Medicine, University of London
- The London School of Economics and Political Science, University of London
- The School of Oriental and African Studies, University of London
- * The University of Nottingham
- The University of York

France

- * Ecole Centrale de Lille
- * Ecole Centrale de Lyon
- * Ecole Centrale de Marseille (EGIM)
- * Ecole Centrale de Nantes
- * Ecole Centrale de Paris
- * Ecole des Mines d'Albi-Carmaux
- * Institut National des Sciences Appliquées de Lyon
- * Institute National Polytechnique de Grenoble
- * The Global Education for European Engineers and Entrepreneurs
- * Université Bordeaux 1
- * Université Joseph Fourier
- * Université Louis Pasteur
- * Université Marc Bloch
- * Université Pierre et Marie Curie (PARIS VI)
- * Université Pierre Mendés France
- * Université Rennes 1
- * Université Rennes 2-Haute-Bretagne
- * Université Robert Schumann
- * Université Stendhal

Italy

- University Degli Studi Di Roma La Sapienza

Morocco

- * Université Mohammed V-Agdal

Ukraine

- * National Technical University of Ukraine "Kyiv Polytechnic Institute"

Iran

- * University of Tehran

Belgium

- The Belgian Nuclear Research Centre (SCK · GEN)

Switzerland

- * The Swiss Federal Institute of Technology, Lausanne

Germany

- * Darmstadt University of Technology
- * Dresden University of Technology
- * Saarland University
- * University of Dortmund
- * University of Göttingen
- * University of Technology Aachen

Sweden

- * Chalmers University of Technology
- * Lund University
- * Royal Institute of Technology in Stockholm
- * Umeå University
- * Uppsala University
- * Stockholm University

Finland

- * Helsinki University of Technology
- * University of Oulu
- * Tampere University of Technology



India

- * Indian Institute of Technology Bombay

Thailand

- * Asian Institute of Technology
- * King Mongkut's Institute of Technology Ladkrabang
- * Suranaree University of Technology

Singapore

- * National University of Singapore

Indonesia

- * University of Indonesia

Poland

Institute of Catalysis and Surface Chemistry,
Polish Academy of Sciences

Russia

- * Moscow State University
- * Novosibirsk State University
- Siberian Branch of Russian Academy of Sciences

Mongolia

- * Mongolian Academy of Sciences
- * Mongolian Technical University of
Science and Technology

United States of America

- * Colorado School of Mines
- * Pennsylvania State University
- * Purdue University
- * University of Alaska
- * University of California, Berkeley
- * University of California, Davis
- * University of California, Irvine
- * University of California, Los Angeles
- * University of California, Merced
- * University of California, Riverside
- * University of California, San Diego
- * University of California, San Francisco
- * University of California, Santa Barbara
- * University of California, Santa Cruz
- * University of Washington

China

- * Chongqing University
- * Fudan University
- * Huazhong University of Science and Technology
- * Jilin University
- * Nanjing University
- * Nanjing University of Aeronautics and Astronautics
- * Northeastern University
- * Ocean University of Qingdao (Ocean University of China)
- Peking University
- * Qingdao University of Science & Technology
- * Shaanxi University of Science & Technology
- * Tongji University
- * Tsinghua University, Beijing
- * University of Science and Technology Beijing
- * University of Science and Technology of China
- * Wuhan University of Technology
- * Xiamen University
- * Xi'an Jiaotong University
- * Zhejiang University

Korea

- * Changwon National University
- * Chonbuk National University
- * Chosun University
- * Chungnam National University
- * Dong-eui University
- * Gwangju Institute of Science and Technology
- * Korea Advanced Institute of Science and Technology (KAIST)
- * Korea University
- * Kyungpook National University
- * Pohang University of Science and Technology
- * Pukyong National University
- * Seoul National University
- * Yeungnam University

Taiwan

- * National Cheng Kung University
- * National Chiao Tung University
- * National Chung Cheng University
- * National Taiwan University
- National Taiwan Ocean University

New Zealand

- * The University of Auckland

Australia

- * The Australian National University
- * The University of New South Wales
- * The University of Sydney

(*) indicates institutions which agrees upon to a mutual application, matriculation and tuition waivers for students from the partner institution.

Agreement on the Department Level

Departments	Areas	Countries and Regions	Institutions			
Graduate School / Faculty of Arts and Letters	Asia	Indonesia	Graduate Program, University of Indonesia			
		Taiwan	College of Liberal Arts, National Sun Yat-sen University Institute of History and Philology, Academia Sinica			
	Oceania	Australia	Faculty of Asian Studies, Australian National University			
Graduate School / Faculty of Education	Asia	China	Center of Japanese Studies, Peking University			
		Korea	College of Sciences in Education, Yonsei University Graduate School of Social Education, Myong Ji University			
	Europe	U. K.	Institute of Education, University of London The Department of Educational Studies, University of York			
Graduate School / School of Law	Asia	China	College of Social Sciences, Kookmin University Institute of Law, Chinese Academy of Social Sciences			
	Central and South America	Brazil	Faculty of Law and LL.M. Program, Federal University of Rio Grande do Sul			
	Europe	Germany	Faculty of Law, University of Heidelberg Juristischen Fakultät der Georg-August Universität Göttingen			
		Italy	Facoltà di Giurisprudenza, Università degli Studi di Milano			
Graduate School of Economics and Management, Faculty of Economics	Asia	China	Center of Japanese Studies, Fudan University Institute of Japanese Studies, Chinese Academy of Social Sciences School of Accounting, Dongbei University of Finance and Economics School of Business, Renmin University of China			
			Korea	College of Political Science and Economics, Kyung Hee University		
			Europe	France	Institut de Gestion de Rennes, Université de Rennes 1	
	Europe	Germany	Institute für Sozialwissenschaftliche Forschung E.V. München			
		U. K.	Faculty of Social Sciences, University of Leicester			
		U. S. A.	School of Chemistry, Physics and Environmental Science University of Sussex			
Graduate School / School of Science	Asia	China	College of Life Science and Technology, Jinan University College of Oceanography and Environmental Science, Xiamen University Lanzhou University South China Sea Institute of Oceanology, Chinese Academy of Sciences			
			Korea	Graduate School, Kongju National University National Fisheries Research and Development Institute		
			Thailand	Faculty of Science, Chulalongkorn University		
		Vietnam	School of Physics, Institute of Science, Suranaree University of Technology			
		Europe	Denmark	Hanoi University of Science, Vietnam National University, Hanoi University of Copenhagen		
			Germany	Faculty of Chemistry, Georg-August Universität Göttingen Faculty of Science, University of Heidelberg		
	Europe	Netherlands	Faculty of Biology, Utrecht University			
		Russia	Institute of Automation and Control Processes of Far-Eastern Branch of Russian Academy of Sciences V.I. Il'ichev Pacific Oceanological Institute, Far-Eastern Branch of Russian Academy of Sciences			
	North America	U. S. A.	University of Alaska Fairbanks University of Illinois at Chicago			
			Oceania	Australia	Faculty of Science, University of Melbourne Faculty of Science, University of Sydney	
	Graduate School / School of Medicine	Asia	China	Beijing Hospital Chinese Medical University Harbin Medical University Hubei Medical University Shanghai Second Medical University Zhejiang Medical University		
				Philippines	San Lazaro Hospital	
				Europe	Hungary	University Medical School of Debrecen
				North America	Canada	Faculty of Medicine, The University of Toronto Faculty of Medicine, University of Calgary Faculty of Medicine, University of Ottawa
U. S. A.						School of Medicine, University of Washington
Oceania				Australia	School of Nursing, Faculty of Health, Queensland University of Technology	
Graduate School / School of Dentistry		Asia	Korea	College of Dentistry, Chonnam National University		
	Europe	Sweden	Faculty of Odontology, University of Umeå			
		U. K.	King's College London Dental Institute			
	North America	Canada	Faculty of Dentistry, University of British Columbia			
		U. S. A.	The Forsyth Institute			
Graduate School / Faculty of Pharmaceutical Sciences	Asia	Korea	College of Pharmacy, Chungbuk National University College of Pharmacy, Sung Kyun Kwan University			
	Europe	Italy	Facoltà di Farmacia, Università degli Studi di Milano			
Graduate School / School of Engineering	Asia	China	College of Engineering, Chongqing University Engineering Department, Zhejiang University Graduate School, Dalian University of Technology Harbin Institute of Technology			

Departments	Areas	Countries and Regions	Institutions	
Graduate School / School of Engineering	Asia	China	Northeast Institute of Technology (Northeastern University)	
			Northwest Institute for Non-ferrous Metal Research	
			Xidian University	
		India	National Chemical Laboratory, Pune	
		Indonesia	Indonesian Institute of Science	
			Institute of Technology Bandung (ITB)	
		Korea	College of Engineering, Chonbuk National University	
			College of Engineering, Chungnam National University	
			College of Engineering, Kyungpook National University	
			College of Engineering, Seoul National University	
			College of Engineering, Yeungnam University	
			College of Engineering, Yonsei University	
		Philippines	Mindanao State University-Iligan Institute of Technology	
		Thailand	Faculty of Engineering of Prince of Songkla University	
	Central and South America	Chile	University of Atacama	
		Mexico	Instituto Politecnico Nacional (IPN)	
	Europe	Czech	VSB-Technical University Ostrava	
		Denmark	Technical University of Denmark	
		France	Engineering School "French Institute for Advanced Mechanics" IFMA	
			Institute National des Sciences Appliquées de Toulouse	
			Université de Metz	
		Germany	Faculty of Engineering Sciences, University of Erlangen-Nuremberg	
			Faculty of Mechanical Engineering, Faculty of Mining, Metallurgy and Geosciences, RWTH Aachen	
			Institute of Microsystem Technology, Freiburg University	
			Technical University Hamburg-Harburg	
		Russia	Institute of Microelectronics Technology and High Purity Materials, Russian Academy of Sciences	
		Slovenia	Engineering Related Five Faculties, University of Ljubljana	
		Sweden	Chalmers University of Technology	
			Institute of Technology, Linköpings University	
		Royal Institute of Technology in Stockholm		
	Switzerland	Swiss Federal Institute of Technology at Lausanne		
Middle and Near East	Iran	Engineering School, Shiraz University		
North America	Canada	Faculty of Engineering, University of Waterloo		
	U. S. A.	Bioacoustics Research Laboratory, College of Engineering, University of Illinois		
		College of Engineering, Georgia Institute of Technology		
		College of Engineering, University of Washington		
		College of Engineering, University of Wyoming		
		Illinois Institute of Technology		
Institute of International Education				
Oceania	Australia	Faculty of Engineering and Information Technology, Griffith University		
Graduate School of Agricultural Science, Faculty of Agriculture	Asia	China	College of Animal Science and Technology, Yangzhou University	
			Fisheries College, Ocean University of Qingdao	
			Shanghai Fisheries University	
			Shanghai Institute of Organic Chemistry, Chinese Academy of Sciences	
		Korea	College of Agriculture, Cheju National University	
		Taiwan	College of Public Health and Nutrition, Taipei Medical University	
		Thailand	Faculty of Agriculture, Kasetsart University	
			Faculty of Fisheries, Kasetsart University	
			Faculty of Science, Kasetsart University	
	Europe	Hungary	Szent Istvan University	
		Italy	Department of Experimental Medicine, University of L'Aquila	
		Spain	Faculty of Agriculture, University of Vigo	
		Sweden	Faculty of Agriculture, Landscape Planning and Horticulture / Faculty of Veterinary Medicine, Swedish University of Agricultural Sciences	
	Graduate School of International Cultural Studies	Europe	France	UFR Langues, Université Rennes 2
			Kyrgyz	International University of Kyrgyzstan
			Uzbekistan	Tashkent State Economic University
Graduate School of Information Sciences	Europe	Italy	Faculty of Engineering, University of Basilicata	
			Volterra Center, The University of Rome "Tor Vergata"	
		Poland	Institute of Mathematics, Wrocław University	
Graduate School of Life Science	North America	Canada	Faculty of Applied Science and Engineering, University of Toronto	
		Korea	College of Agricultural and Life Science, Suncheon National University	
	Asia	Thailand	School of Biotechnology, Institute of Agricultural Technology, Suranaree University of Technology	
Europe	Czech	Faculty of Science, Masaryk University		
	Netherlands	Faculty of Biology, Utrecht University		
Graduate School of Environmental Studies	Asia	Korea	Gwangju Research Center, Korean Institute of Industrial Technology	
	Europe	Uzbekistan	Tashkent State Economic University	
Graduate School of Educational Informatics, Research Division	Asia	Thailand	Faculty of Education, Chulalongkorn University	

* Continued on page 51.

Agreements on Academic Exchange with Foreign Institutions

Agreement on the Department Level (Continued)

Departments	Areas	Countries and Regions	Institutions		
Institute for Materials Research	Africa	Egypt	Assiut University		
		Asia	China	Hong Kong University of Science and Technology Institute of Metal Research, Chinese Academy of Sciences Institute of Physics, Chinese Academy of Sciences Institute of Solid State Physics, Chinese Academy of Sciences School of Material Science and Engineering, Tianjin University School of Materials Science and Engineering, Beihang University School of Materials Science and Engineering, Dalian University of Technology Shanghai Institute of Ceramics, Chinese Academy of Sciences Tsinghua University Wuhan University of Technology	
	Europe	Korea	Atomic Scale Surface Science Research, Yonsei University Ceramic Material Research Institute, Hanyang University College of Engineering, Inha University Department of Metals and Materials Engineering, Sun Kyun Kwan University Division of Materials Science and Engineering, College of Engineering, Korea University Electric Component Metals Design Education Center (EMDEC), Korea Advanced Institute of Science and Technology Institute for Basic Science, Changwon National University Korean Institute of Science and Technology Research Center for Electronics Ceramics, Dong-eui University Research Institute of Industrial Science and Technology (RIST) Research Institute of Industrial Technology, Pusan National University		
		Singapore	Singapore Institute of Manufacturing Technology		
		Taiwan	College of Engineering, National Taiwan University Materials Research Laboratories, Industrial Technology Research Institute		
		Belgium	Materials Research Department, SCK·ECEN		
		France	Ecole des Mines de Saint-Etienne, Centre Matériaux et Structures Institute National Polytechnique de Lorraine Laboratoire de Physico-Chimie des Matériaux Luminescents, Université de Claude Bernard-Lyon I Laboratoire de Thermodynamique et Physico-Chimie Métallurgique, Institute National Polytechnique de Grenoble		
			Germany	Institute für Metallphysik der George-August, Universität Göttingen Max-Planck Institute für Metallforschung	
		Italy	Department of Physics, Pisa University		
		Poland	Institute of Electronic Materials Technology, Poland Institute of Physics, Polish Academy of Sciences Institute of Vacuum Technology, Warsaw		
			Russia	General Physics Institute, Russian Academy of Science	
		Slovenia	Jozef Stefan Institute, Ljubljana		
		U. K.	Department of Electronics, University of York		
		North America	U. S. A.	Division of Engineering and Applied Sciences, Harvard University Geballe Laboratory for Advanced Materials, Stanford University School of Engineering & Applied Science, University of Pennsylvania	
				China	The Liaoning Center Hospital and The Liaoning Center Institute
				Russia	Smolensk State Medical Academy
		Institute of Development, Aging and Cancer	Asia	China	The Liaoning Center Hospital and The Liaoning Center Institute
	Europe		Russia	Smolensk State Medical Academy	
	North America		U. S. A.	The Bioacoustics Research Laboratory, College of Engineering, University of Illinois	
	Institute of Fluid Science	Asia	China	College of Mechanical and Electrical Engineering, Nanjing University of Aeronautics and Astronautics Department of Hydraulic and Hydropower Engineering, Tsinghua University Institute of Physics, Chinese Academy of Sciences The Institute of Theoretical Physics, Chinese Academy of Science	
				Korea	College of Engineering, Korea Advanced Institute of Science and Technology
				Singapore	Faculty of Engineering, National University of Singapore School of Mechanical and Production, Engineering, Nanyang Technological University
			Taiwan	National Nano Device Laboratories, National Applied Research Laboratories	
			Europe	Czech	Institute of Plasma Physics, Academy of Sciences of the Czech Republic
				France	Institut National des Sciences Appliquées de Lyon Institute of Fluid Mechanics, Louis Pasteur University
					Germany
				Greece	School of Mechanical Engineering, National Technical University of Athens
				Hungary	Faculty of Chemical Engineering, Budapest University of Technology and Economics Research Institute for Technical Physics and Materials Science of the Hungarian Academy of Sciences
					Italy
		Romania		Faculty of Electrical Engineering "Polytechnica" University of Bucharest	
		Russia	Institute of Theoretical and Applied Mechanics, Russian Academy of Science Power Mechanical Engineering Faculty Moscow Power Engineering Institute Technical University		

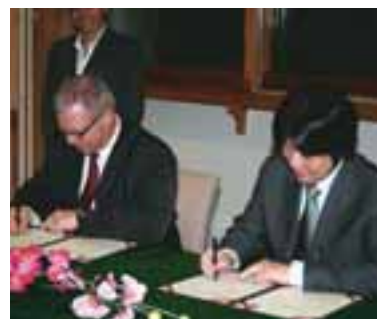
Departments	Areas	Countries and Regions	Institutions	
Institute of Fluid Science	Europe	U. K.	College of Aeronautics, Cranfield Institute of Technology	
			Department of Mechanical, Aerospace & Manufacturing Engineering, University of Manchester Institute of Science and Technology	
	North America	Canada	Institute for Aerospace Studies, University of Toronto	
		U. S. A.	College of Engineering, Syracuse University	
	Oceania	Australia	Faculty of Engineering, University of New South Wales	
Research Institute of Electrical Communication	Asia	China	Department of Computer Science and Engineering, School of Computer Science and Electrical Engineering, Harbin Institute of Technology	
			Nanjing University	
			Scientific Research Department, Shezen University	
			Korea	Institute of Information and Communication Technology, Sung Kyun Kwan University
				School of Computer and Communication, Taegu University
			Thailand	Faculty of Science, Chulalongkorn University
	Europe	France	Germany	Research Center of Condensed Materials and Nanosciences, National Center for Scientific Research
				IHP-Innovations for High Performance Microelectronics
				Institute of Materials Science, Faculty of Applied Physics, University of Twente
				Institute of Physics, Polish Academy of Science
Institute of Radioengineering and Electronics (IRE), Russian Academy of Sciences				
		U. K.	Queen Mary and Westfield College, University of London	
	North America	U. S. A.	James Franck Institute, University of Chicago	
Institute of Multidisciplinary Research for Advanced Materials	Asia	China	Center for Nanoscale Science and Technology, Peking University	
			Changchun Institute of Optics, Fine Mechanics and Physics, Chinese Academy of Sciences	
			College of Material Science and Engineering, Huaqiao University	
			College of Materials Engineering, Zhengzhou University	
			Northeast Institute of Technology (Northeastern University)	
			Korea	Advanced Materials & Process Research Center for IT, Sungkyunkwan University
				Institute of Hybrid Materials for Information and Biotechnology, Hannam University
	Europe	France	École de s Mines d'Albi-Carmaux	
		Germany	Department of Physics, Free University of Berlin	
			Institute für Festkörperphysik, Freidrich-Schiller-Universität Jena	
		Romania	National Institute for Lasers, Plasma and Radiation Physics	
		Russia	Institute of Automation and Control Processes, Far Eastern Branch of the Russian Academy of Sciences	
			Institute of Solid State Physics, Russian Academy of Sciences	
			Nuclear Physics Institute, Tomsk Polytechnic University	
			U. K.	Daresbury Laboratory, Council for the Central Laboratory of the Research Councils
		Ukraine	Institute for Problems of Materials Science, National Academy of Science of Ukraine	
North America	Canada	Department of Metallurgy and Materials Science, University of Toronto		
		Mc Gill Metal Processing Center, Mc Gill University		
	U. S. A.	Department of Chemistry, Columbia University		
			Department of Earth and Environmental Engineering, Fu Foundation School of Engineering and Applied Science, Columbia University	
			Department of Metallurgical Engineering, University of Utah	
Center for Northeast Asian Studies	Asia	China	Guangdong Institute of Ethnology	
		Mongolia	Geoscience Center, Mongolian University of Science and Technology	
	Europe	Russia	Economic Research Institute, Russian Academy of Sciences Far Eastern Division	
			International Foundation of Technology and Investment	
			Ugora Research Institute of Information Technologies	
			V. N. Sukachev Institute of Forest SB RAS	
Cyclotron and Radioisotope Center	Central and South America	Cuba	Finlay Institute	
Center for Interdisciplinary Research	Asia	China	Shanxi Economic Management Cadre College	
		Korea	Institute of Industrial Technology, Changwon National University	



"Tohoku University Lu Xun Award" presented to President Gu Binling of Tsinghua University



His Royal Highness Prince Phillip of Belgium (third left) and President Yoshimoto



Director A. Storck of INSA-Lyon and Executive Vice President Ohnishi

Number of International Students

(as of May 1, 2006)

Number of International Students by Funding Status and Student Levels

Areas	Countries and Regions	Funding Status						Total	Student Levels												
		Japanese Government Scholarships		Private Means					Undergraduates	Graduates			Research Students			Others					
		Male	Female	Foreign government funds		Others				Master Course / Master's Program	Doctoral Program	Doctoral Program (4-year course)	Undergraduate Schools	Graduate Schools	Research Institutes	Intensive Japanese Language Program	Special Auditors (Undergraduates)	Special Auditors (Graduates)	Special Research Students	Special Students	
				Male	Female	Male	Female														
Asia 988 (82.7%)	Armenia		1							1											
	Azerbaijan	1	1			1															
	Bangladesh	9	4			7	3	23			7	12	1	2							1
	Cambodia	1				1		2	2												
	China	30	24			199	219	472	40	154	126	34	86	9	10			11			2
	India	4				6	1	11			1	9						1			
	Indonesia	20	8	1		7	5	41	4	10	19	2	3				1	1			1
	Kyrgyz		1					1			1										
	Laos	2						2			1	1									
	Malaysia	5	4			5		27	20	3	3							1			
	Mongolia	2	9	11	2	13	22	46	1	15	11	1	15	1	1						1
	Myanmar	3	5					8			2	3		1	1	1					
	Nepal	8	1			2	1	12	4	4	3	1									
	Pakistan	7					1	8	1		5			1							
	Philippines	7	5			2		14			4	9						1	1		
	Singapore	1	1					2			2										
	South Korea	37	14			96	58	205	29	34	93	2	7	8	5			23	2		2
	Sri Lanka	4				1	1	6			1	4		1							
	Taiwan					13	27	40	2	10	18		3	2					4		1
	Thailand	7	5	2		9	5	28	2	2	17	3	2					1	1		
Uzbekistan						1	1			1											
Vietnam	8	4			15	8	35	9	13	10			1	1						1	
Middle and Near East 45 (3.8%)	Iran	18	5			6	5	34	4	7	19	3					1				
	Syria	2	1					3					1	1				1			
	Turkey	6	1					7			7										
	Yemen	1						1												1	
Africa 31 (2.6%)	Cote d'Ivoire	1						1				1									
	Democratic Republic of the Congo	3						3		1	1							1			
	Egypt	3		2	1	5		11		2	8									1	
	Kenya	1				1		2		1								1			
	Libya	1					1	2		2											
	Morocco	3	2					5		3	1							1			
	Senegal	1						1			1										
	Tunisia	2	1					3		2								1			
	Uganda	1						1		1											
	Zambia	1						1				1									
	Zimbabwe	1						1		1											
Oceania 5 (0.4%)	Australia	1				2		3		1								1		1	
	Papua New Guinea	2						2		1	1										
North America 22 (1.8%)	Canada	1					1	2		2											
	USA	1				16	3	20		2	3		1					12		1	
Central and South America 29 (2.4%)	Bolivia	2				1		3		1	1	1									
	Brazil	3	2			1	1	7		2	2	1						2			
	Columbia	4						4	2	2											
	Costa Rica	1						1		1											
	Guatemala	1						1												1	
	Mexico	4				1		5			1	1			1	2					
	Nicaragua	1						1				1									
	Panama		1					1				1									
	Peru		1					2				1								1	
	Uruguay	1				1		2			2										
	Venezuela	2						2		1	1										
Europe 74 (6.2%)	Austria	1						1		1											
	Belgium	1						1		1											
	Bosnia Herzegovina	1					2	3		2		1									
	Bulgaria					1		1		1											
	Denmark	1						1				1									
	Finland					6	1	7					1					5		1	
	France	1				4	1	6			1	1						3		1	
	Germany					3	1	4			2						1		1		
	Hungary		1					1									1				
	Italy		1					1											1		
	Moldova		1					1	1												
	Netherlands					1		1											1		
	Poland	1				1		2			1							1			
	Portugal	1	1					2			2										
	Romania	5	5				1	11	5	2	3	1									
	Russia	1	3			1	3	8		1	5								2		
	Spain	1				1	1	3										1	2		
	Sweden	3				8	1	12			2						1		8		1
	UK	2	1			1		4			2		1		1						
	Ukraine	2				1		3			1						1		1		
Yugoslavia					1		1			1											
Total			246	114	16	3	441	374	1,194	126	301	417	60	126	24	26	17	79	2	15	1

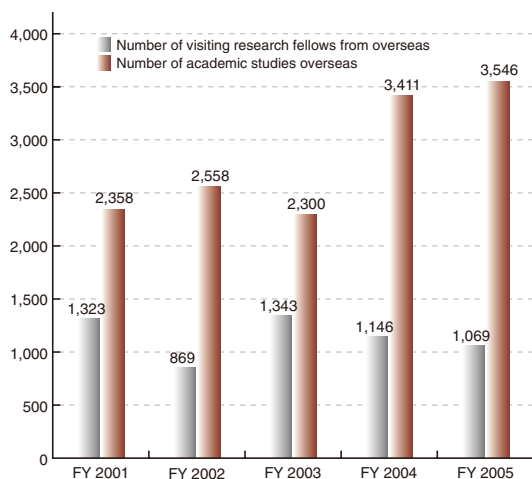
(as of May 1, 2006)

Number of International Students by Disciplines

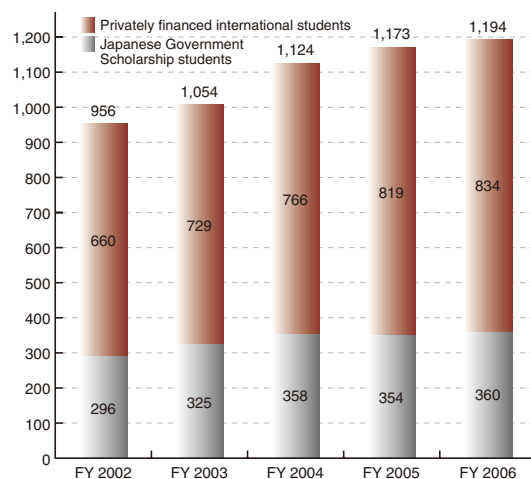
Areas	Divisions		Total	Arts and Letters	Education	Law	Economics and Management / Economics	Science	Medicine	Dentistry	Pharmaceutical Sciences	Engineering	Agricultural Science / Agriculture	International Cultural Studies	Information Sciences	Life Sciences	Environmental Studies	Educational Informatics, Education Division	Institute for Materials Research	Institute for Development, Aging and Cancer	Research Institute of Electrical Communication	Institute of Multidisciplinary Research for Advanced Materials	Center for International Exchange	Center for Northeast Asian Studies	Center for Interdisciplinary Research		
	Countries and Regions																										
Asia	Armenia		1											1													
	Azerbaijan		3						3																		
	Bangladesh		23	1			3	3	2		3	6				5											
	Cambodia		2				2																				
	China		472	23	10	13	121	27	48	6	7	86	8	47	29	2	28	7	6			1			3		
	India		11					5				4			1									1			
	Indonesia		41	1				6	2		1	20	4	1	4		1							1			
	Kyrgyz		1					1																			
	Laos		2									1			1												
	Malaysia		27	2				1	2		1	20				1											
	Mongolia		46		4	1	13	4	1			1		16				5									
	Myanmar		8	1		1		2			1	1		1									1		1		
	Nepal		12	1			2		2			4			2	1											
	Pakistan		8				1					4	1		1												
	Philippines		14				1	2				6	1	2	1			1						1			
	Singapore		2												2												
	South Korea		205	33	7	8	13	7	3	2	1	90	6	13	7	4	5	1	1				3			1	
	Sri Lanka		6					3				2			1												
	Taiwan		40	14	3		3		1			9	1	7	1	1											
	Thailand		28	2			2	2	3		1	14	2		1											1	
Uzbekistan		1																1									
Vietnam		35			1	5	1			1	18		4	3		1								1			
Middle and Near East	Iran		34	1			1	4		1	22			3	1							1					
	Syria		3						1		1														1		
	Turkey		7									7															
	Yemen		1																							1	
Africa	Cote d'Ivoire		1						1																		
	Democratic Republic of the Congo		3				1	1																	1		
	Egypt		11					4				4	1		2												
	Kenya		2									1														1	
	Libya		2															2									
	Morocco		5									2			1	1										1	
	Senegal		1									1															
	Tunisia		3				1		1																	1	
	Uganda		1									1															
	Zambia		1						1																		
	Zimbabwe		1									1															
Oceania	Australia		3	1								2															
	Papua New Guinea		2													1	1										
North America	Canada		2					1			1																
	USA		20	1	1		3					15															
Central and South America	Bolivia		3					1			1							1									
	Brazil		7	1					1		1			1	1											2	
	Columbia		4									3						1									
	Costa Rica		1									1															
	Guatemala		1																							1	
	Mexico		5						1						1								1			2	
	Nicaragua		1						1																		
	Panama		1						1																		
	Peru		2						1																	1	
	Uruguay		2	1								1															
Venezuela		2									1				1												
Europe	Austria		1											1													
	Belgium		1					1																			
	Bosnia Herzegovina		3				1					1		1													
	Bulgaria		1	1																							
	Denmark		1	1																							
	Finland		7				1					6															
	France		6					1				3		1	1												
	Germany		4				1					1		1												1	
	Hungary		1																			1					
	Italy		1	1																							
	Moldova		1				1																				
	Netherlands		1					1																			
	Poland		2					1																		1	
	Portugal		2										2														
	Romania		11	1			3		2			3		2													
	Russia		8		2	1	2	1				2															
	Spain		3									2														1	
	Sweden		12	2					1			6			2								1				
	UK		4	2								1														1	
Ukraine		3									1		1												1		
Yugoslavia		1									1																
Total		1,194	91	27	25	177	78	85	8	19	379	24	100	71	12	47	8	7	1	1	10	19	4	1			

Statistics on Personnel Exchange

Academic Exchange



Number of International Students



Overseas Office

Liaison Office

Institution (Location)	Country (Starting Date)	Liaison Office	Department / Institute of TU
① Siberian Branch of Russian Academy of Sciences (Novosibirsk Science Center)	Russia (September 22, 1997)	Siberia Liaison Office of CNEAS	Center for Northeast Asian Studies
② University of Cambridge (Department of Materials Science and Metallurgy)	U. K. (April 23, 2002)	IFCAM Cambridge Office	Institute for Materials Research
③ The University of New South Wales (International Office)	Australia (May 17, 2002)	Liaison Office of Tohoku University	Institute of Fluid Science Graduate School of Law
④ Harvard University (Division of Engineering and Applied Sciences)	U. S. A. (May 31, 2002)	IFCAM Harvard Office	Institute for Materials Research
⑤ Moscow State University (Faculty of Physics)	Russia (June 21, 2002)	Liaison Office of Tohoku University	Institute of Fluid Science Graduate School of Engineering Institute for Materials Research
⑥ Royal Institute of Technology (Department of Materials Science and Engineering)	Sweden (September 6, 2002)	IFCAM Stockholm Office	Institute for Materials Research
⑦ Stanford University (Geballe Laboratory for Advanced Materials)	U. S. A. (February 11, 2003)	IFCAM Stanford Office	Institute for Materials Research
⑧ Institute of Physics, Chinese Academy of Sciences (State Key Laboratory for Surface Physics)	P. R. China (February 20, 2003)	IFCAM Beijing Office	Institute for Materials Research
⑨ Syracuse University (L. C. Smith College of Engineering and Computer Science)	U. S. A. (November 11, 2003)	IFS Syracuse Office	Institute of Fluid Science
⑩ Korea Advanced Institute of Science and Technology (Department of Mechanical Engineering)	Korea (December 18, 2003)	Liaison Office of Tohoku University	Institute of Fluid Science
⑪ Institut National des Sciences Appliquées de Lyon (Materials Science and Physical Metallurgy Laboratory)	France (January 23, 2004)	Liaison Office of Tohoku University	Institute of Fluid Science Graduate School of Engineering Institute of Development, Aging and Cancer

Overseas Office

Overseas Office	Date Established	Liaison
⑫ Tohoku University US Office	May 24, 2006	Los Altos, CA, USA



International Symposium

Date	Name	Description	Place
October 22-23, 2003	Tohoku-Göttingen Forum	By presenting the latest research achievement to European scholars and to the general public and with the aim of promoting research collaboration as well as researcher and student exchange between Tohoku University and various academic institutions in Europe, Tohoku University held a joint forum with the University of Göttingen and the Japan Society for the Promotion of Science.	Göttingen, Germany
June 10-11, 2004	Tohoku-Cambridge Forum	The event was Tohoku University's second overseas forum, held to facilitate broad-based academic exchange with the research institutions in the United Kingdom and other parts of Europe.	Cambridge, United Kingdom
October 22-23, 2004	The Centennial Anniversary Commemoration of Lu Xun's Enrollment at Tohoku University	To commemorate the 100th Anniversary of a Chinese writer, Lu Xun's enrollment as an exchange student at Sendai Medical School, the forerunner of Tohoku University Faculty of Medicine. The presidents and vice-presidents of six major Chinese universities with which the University has academic exchange agreements were invited to attend a series of events. The events consisted of a commemorative ceremony, a public symposium which includes panel discussions with Sendai's business leaders, a seminar to discuss the future academic exchange between Tohoku University and Chinese institutions, and also a special exhibition of Lu Xun, at the Tohoku University Archives.	Sendai, Japan
September 27-28, 2005	The International Symposium on Lu Xun — His Starting Point and Memories in Sendai	Tohoku University and the Lu Xun Museum in Beijing jointly organized this event with the support of the Japanese Embassy in China, it provided a forum where the scholars, government officials, and members of the general public explored and exchanged views, on the significance of Lu Xun's studies from an interdisciplinary perspective, to contribute in furthering its research. The event was held to celebrate the publication of the Chinese edition of <i>Lu Xun and Sendai</i> ; "The 100th Anniversary of Lu Xun's Enrollment at Tohoku University," compiled primarily by the Tohoku University faculty and students, and published by Tohoku University Press.	Beijing, P.R.China



Activities for International Exchange

Double Degree Program with Overseas Institutions

As society becomes increasingly globalized, Tohoku University launches a double degree master's programs with elite institutes of higher education in France and China, to develop the next-generation of human resources, able to spearhead the 21st century. From fiscal 2006, the Écoles Centrale Group (composed of five Écoles Centrale [Lille, Lyon, Marseille, Nantes, Paris]) and the Institut National des Sciences Appliquées de Lyon (INSA-Lyon) become our program partners in France. All are grandes écoles, leading institutes which attract top students from France and other countries around the world, offering the finest in education. The partner in China is Tsinghua University, an institute of higher learning which is presently attracting much international attention. The Double Degree Programs of Tohoku University are in the undergraduate and graduate fields of science and engineering.

Global Operations Centre

Global Operations Centre (GOC) was established on June the 1st 2005, with the support of Japan's Ministry of Education, Culture, Sports, Science and Technology; to create a university-wide international strategy with the objective of exercising strategic international exchange. GOC, as a strategic headquarters, will achieve and advance a flexible strategic concept with world wide realization of internationally competitiveness in research and education, at Tohoku University, GOC will also serve as a coordinator and guide the university's promotion of (1) the internationalization of the composition in Tohoku University's student body and staff, (2) the internationalization of Tohoku University's research and education activities, and (3) reform Tohoku University's internal organization and activities in light of international standards.

The activities of GOC are listed below:

- 1) Development of Double Degree Programs with institutions of higher learning overseas
- 2) Consult, contact, and coordinate with universities, governmental agencies and related organizations in Japan and overseas
- 3) Participate in activities related to the preparation, organization and support of international conferences (held in Japan and overseas) symposiums, seminars and the like
- 4) Possess provisions of information in various languages via an Internet website
- 5) Hold training programs for administrative staff
- 6) Promote international collaborative projects between the academia and industry
- 7) Establish and support the international student alumni organizations and the creation of an international exchange database
- 8) Support the activities related to the operation of overseas facilities

Students Exchange Programs

Tohoku University International Doctoral Program in Engineering (with elective courses in English and financial support)

This is a special course for overseas students studying on a Doctorate program at the Graduate School of Engineering, where research lectures and discussions are conducted in English. (Participation is limited to 25 students, including 17 students who are awarded a Japanese Government Scholarship)

<http://www.eng.tohoku.ac.jp/eng/index-e.html>

<http://www.eng.tohoku.ac.jp/eng/english/admission/idp-e.html>

International Graduate Program on Advanced Science (Masters or Doctoral Program)

This is a special course for the overseas students who are studying on their Masters or their Doctoral program at the Graduate School of Science, where research lectures and discussions are conducted in English. (Participation is limited to 20 students)

E-mail: direct@sci.tohoku.ac.jp

<http://www.sci.tohoku.ac.jp/direct/>

Tohoku University Junior Year Program in English (JYPE)

Outline

The main purpose of this program is to offer overseas students an opportunity to take science, engineering, and education courses at Tohoku University, without having to attain proficiency in the Japanese language that would be necessary when taking the same courses in Japanese. All lectures are held in English and by standards for school credits of equivalent courses offered in Japanese.

The program also offers courses on the Japanese language, culture and society aimed at the promotion of understanding of Japan's language, and its social customs. Cultural and intellectual exchange with Japanese students are an integral part of this program and will be accomplished through class work as well as participation in activities of research groups.

The one-year course commences on October 1st. Admitting approximately 30 students. Applicants are recommended to take the one-year course, since most classes are designed for one full year. However, some students are admitted to a 6-month course if requested.

http://insc.tohoku.ac.jp/main_e.html

Japan-France Graduate Exchange Program

This is a student exchange program for students enrolled in a Japanese consortium formed by several participating universities including Tohoku University and those of a French consortium. Students are sent to study for one year, in other countries with the financial support offered by the Japan Student Services Organization.

Renault Program

There are three scholarship programs awarded to exchange students by the Renault Foundation. These Programs are designed for enabling students to study the social and economic systems and cultures of Europe, concentrated on France.

MBA Dauphine-Sorbonne-Renault

The program's goal is to teach students to become fluent in corporate management techniques in a multicultural and multinational business environment, and to acquire management skills necessary for a higher level of corporate responsibility.

Master ParisTech Fondation Renault

The program's goal is to teach students to become able and to cope with responsibility by adapting to the context of sustainable development on projects. It also teaches to respect, main issues of transportation, namely those in intermodality, the interface between transportation systems, space and mobility, and the economic and social impact on the transportation sector.

Cycle Majors Renault

This program offers Japanese students the opportunity to visit France, for a one-year study on subjects of their choice, so long as it is connected with business professions. Each application will be examined to give full support and guidance to students for obtaining an appropriate type of training.

Special Japanese Language Program for International Students and Scholars

This program is open to the international students and scholars at Tohoku University. It aims to improve the students' ability in Japanese and basic academic skills, and also helps them to adapt to their new living environments.

Campuses

Introduction

Organization

Students

Finance

Major Research Projects

International Exchange

Campuses

Profile

Sendai is one of the traditional cities of Japan yet known as a modern city with harmony in the beauty of nature and urban life. The city was founded in 1600 by Masamune Date, a famous feudal lord, and prospered as the center city for politics and economy of northern Japan. The city is one of Japan's 14 major cities with a population of one million people.

Sendai is the largest city located in the northeast Tohoku Region with many governmental branches established in the city. Sendai is well known by its nickname, "Mori no Miyako" (City of Trees), as most of the major streets and avenues in the city are lined with zelkova trees. It also became known as an "Academic City," since it has many universities and colleges compared to its population.

Sendai is proud of its history, arts and culture, and enjoys many events such as the Sendai Tanabata Festival. It also cherishes its beautiful nature in and around the city; picturesque seacoast of Matsushima, a gigantic volcano of Zao, and various hot springs resorts.



Access

1. Flight

Sendai International Airport (SDJ) has regular international flights for East Asian cities and also for many domestic cities.

- From Seoul: 2 hrs 10 mins.
- From Beijing: 4 hrs 30 mins.
- From Shanghai: 2 hrs 20 mins .
- From Tokyo-Narita Int'l Airport: 55 mins.

2. "Tohoku Shinkansen" Bullet Train

From Tokyo to Sendai: 1 hr 36 mins.



Provided by the Miyagi Prefecture Industry Department, Tourism Division



Provided by the Miyagi Prefecture Industry Department, Tourism Division



Provided by the Miyagi Prefecture Industry Department, Tourism Division

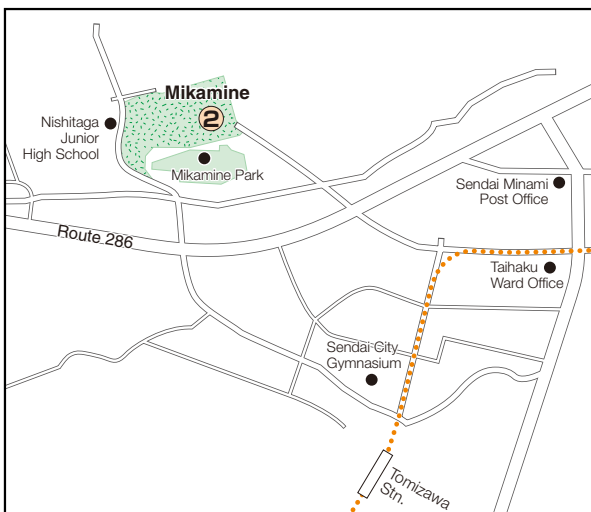
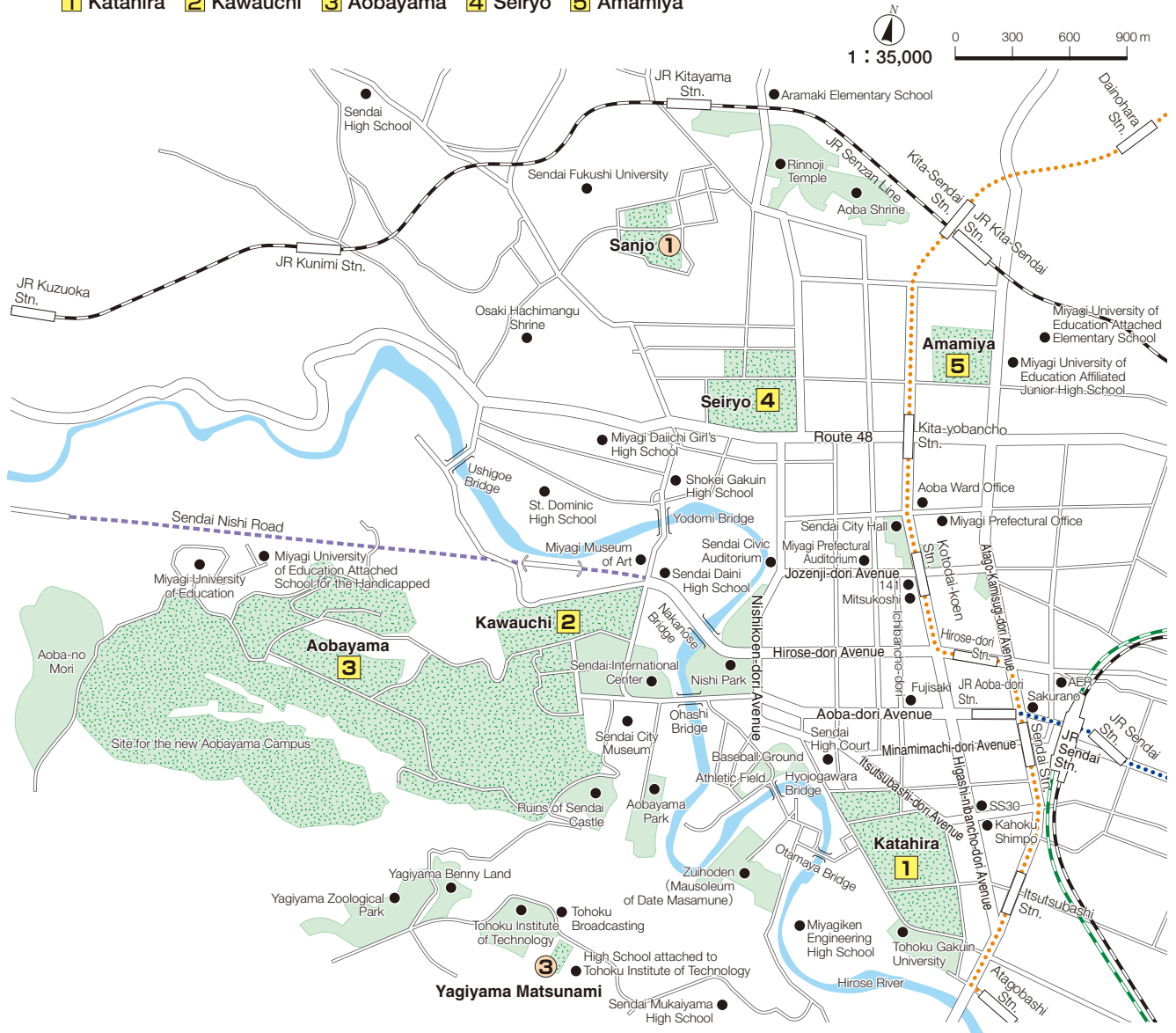


Provided by the Miyagi Prefecture Industry Department, Tourism Division

Location of the Campuses in Sendai City

Campuses in Sendai City

- 1 Katahira 2 Kawauchi 3 Aobayama 4 Seiryō 5 Amamiya



Provided by the Miyagi Prefecture Industry Department, Tourism Division



Provided by the Miyagi Prefecture Industry Department, Tourism Division

Location of the Campuses in Sendai City

Academic Facilities and Others

Facility	Address	Phone
① International House	19-1 Sanjo-machi, Aoba-ku, Sendai 981-0935	+81-22-275-9901
② Laboratory of Nuclear Science	1-2-1 Mikamine, Taihaku-ku, Sendai 982-0826	+81-22-743-3412
③ International House Annex	4-5 Matsunami-cho, Yagiyama, Taihaku-ku, Sendai 982-0836	+81-22-229-9120
④ Planetary Observatory of PPARC (Onagawa)	Kirigasaki, Onagawa-cho, Oshika-gun, Miyagi 986-2204	+81-225-53-3374
⑤ Field Science Center (Onagawa)	15 Konorihama-mukai, Onagawa-cho, Oshika-gun, Miyagi 986-2242	+81-225-53-2472
⑥ Field Science Center (Kawatabi)	232-3 Yomogida, Naruko-onsen, Osaki, Miyagi 989-6711	+81-229-84-7312
⑦ Kawatabi Seminar Center	75 Hara, Naruko-onsen, Osaki, Miyagi 989-6711	+81-229-84-7309
⑧ Planetary Observatory of PPARC (Zao)	200-1 Nanokahara, Togatta-onsen, Zao-cho, Katta-gun, Miyagi 989-0800	+81-224-34-2743
⑨ Research Center for Marine Biology (Asamushi)	9 Sakamoto, Asamushi, Aomori 039-3501	+81-17-752-3388
⑩ Mt. Hakkoda Botanical Laboratory	1-1 Minami-arakawayama, Arakawa, Aomori 030-0111	+81-17-738-0621
⑪ Akita Branch Observatory of RCPEQVE	1-14-46 Shogunno-minami, Akita 011-0936	+81-18-845-8716
⑫ Honjo Branch Observatory of RCPEQVE	Ohyana, Yurihonjo, Akita 015-0091	+81-184-29-2124
⑬ Sanriku Branch Observatory of RCPEQVE	114 Kodomari, Okirai, Sanriku-cho, Ofunato, Iwate 022-0101	+81-192-44-2107
⑭ Tono Branch Observatory of RCPEQVE	Komagi, Matsuzaki-cho, Tono, Iwate 028-0545	+81-198-62-2800
⑮ International Research Center for Nuclear Materials Science	2145-2 Narita-cho, Oarai, Ibaraki 311-1313	+81-29-267-3181
⑯ Osaka Center for Industrial Materials Research	Osaka Prefecture University, 1-1 Gakuen-cho, Naka-ku, Sakai, Osaka 599-8231	+81-72-254-5603
⑰ Planetary Observatory of PPARC (Iitate)	Maeda, Iitate-mura, Soma-gun, Fukushima 960-1636	+81-224-42-0530
⑱ KamLAND, Research Center for Neutrino Science	408 Uemachi, Higashi-mozumi, Kamioka-cho, Hida, Gifu 506-1205	+81-578-5-0030
⑲ Joint Research Facility between Tohoku and Miyazaki Universities of TFIRC (Hyuga)	1610-3 Matsunomoto, Mimitsu-cho, Hyuga, Miyazaki 889-1111	+81-982-58-1988
⑳ Tohoku University Liaison Office (Tokyo)	Suite 2313, Marunouchi Building 23F, 2-4-1 Marunouchi, Chiyoda-ku, Tokyo 100-0005	+81-3-3218-9612
㉑ Tohoku University US Office	4410 El Camino Real, Suite #111, Los Altos, CA 94022, USA	+1-650-947-0664

Notes:

RCPEQVE: Research Center for Prediction of Earthquakes and Volcanic Eruptions

PPARC: Planetary Plasma and Atmospheric Research Center

TFIRC: Transdisciplinary Fluid Integration Research Center

Student Residence

Facility	Structure	Address	Phone
Nisshu Ryo (for male)	1 unit (2,111 m ²), Capacity: 103 persons	16-3 Modori-cho, Yagiyama, Taihaku-ku, Sendai 982-0832	+81-22-229-1858
Ibun Ryo (for male)	1 unit (1,847 m ²), Capacity: 96 persons	ditto	+81-22-229-5392
Seifu Ryo (for male)	1 unit (1,402 m ²), Capacity: 81 persons	ditto	+81-22-229-4954
Joshun Ryo (for female)	1 unit (1,225 m ²), Capacity: 64 persons	19-1 Sanjo-machi, Aoba-ku, Sendai 981-0935	+81-22-272-9857
Meizen Ryo (for male)	1 unit (3,062 m ²), Capacity: 160 persons	6-3-2 Kamisugi, Aoba-ku, Sendai 980-0011	+81-22-234-0134
Matsukaze Ryo (for male)	1 unit (2,908 m ²), Capacity: 150 persons	ditto	+81-22-275-1221

Facility for Extracurricular Activity

Facility	Address	Phone
Hyojogawara Ground / University Hostel	2-1 Kadan, Aoba-ku, Sendai 980-0815	
Natori Boat House / University Hostel	10-1 Yashiki, Shimomasuda, Natori, Miyagi 981-1201	+81-22-384-0455
Toda Ground / University Hostel	5-50 Toda-koen, Toda, Saitama 335-0024	+81-48-447-0658
Shichigahama Yacht House / University Hostel	61-5 Hamayashiki, Yoshidahama, Shichigahama-cho, Miyagi-gun, Miyagi 985-0802	+81-22-357-2659
Shusetsu Hütte	820-1 Arayashiki, Zao-onsen, Yamagata 990-2301	+81-236-94-9094
Seikei Lodge	305 Ro Rinshohan, Kokuyurin, Kurashikidake, Zao-cho, Katta-gun, Miyagi 980-0800	
Katahira Chuo Gymnasium	2-1-1 Katahira, Aoba-ku, Sendai 980-8577	
Katahira (1·2·4·5·6) Hall	ditto	
Katahira Budojo	ditto	
Katahira Tennis Court	ditto	
Tomizawa Baseball Ground / Driver Training Circuit	1-5 Mikamine, Taihaku-ku, Sendai 982-0826	
Aobayama Riding Ground	6-3 Aoba, Aramaki, Aoba-ku, Sendai 980-0845	
Kawauchi Hall	41 Kawauchi, Aoba-ku, Sendai 980-8576	
Kawauchi Circle Hall	ditto	
Facility for Extracurricular Activity (A)	ditto	
Circle Club Rooms E·F·G	ditto	

International House

Tohoku University's International House in Sanjo-machi campus was established in 1983 and expanded in 1989 and 1994. It provides housing for both international students and researchers as well as acting as a forum for intercultural communication in the Sanjo region.

There is an additional accommodation complex for international researchers called Yagiyama Hall, established in 1973, and currently known as the Annex of the International House.

Accommodations available in the International House and the Annex are as follows:

International House

General Information

Address: 19-1 Sanjo-machi, Aoba-ku, Sendai 981-0935

Phone: +81-22-275-9901

Construction: Ferro-Concrete Construction

Area: 28,466m²

Floor: 10,661m²

Opening: November 26, 1983

Two stories building	1
Three stories building	7
Four stories building	1
Five stories building	1

Common Facilities:

Lobby	1
Reading Room	1
Meeting Room	2
Recreational Facilities including Table tennis corner, Cultural room and others	

Residents	Room Type	Floor Area	Number of Rooms
Students	Single Room	18m ²	147
	Couple Room	46m ²	42
	Family Room	48m ²	31
	Sub Total		220
Researchers	Single Room	18m ²	12
	Couple Room	49m ²	14
	Family Room	60m ²	8
	Sub Total		34
Grand Total			254



International House Annex

General Information

Address: 4-5 Matsunami-cho, Yagiyama, Taihaku-ku, Sendai 982-0836

Phone: +81-22-229-9120

Construction: Ferro-Concrete Construction

Area: 12,763m²

Three stories building	3
------------------------	---

Floor: 1,518m²

Opening: August 1, 1973

Common Facilities: Lobby and other facilities

Residents	Room Type	Floor Area	Number of Rooms
Residents	Single Room	26m ²	12
	Couple Room	52m ²	6
	Family Room	100m ²	6
Grand Total			24



Campus Map

1 KATAHIRA CAMPUS

Land: 237,563㎡ Buildings: 152,921㎡

1-1, Katahira, 2-chome, Aoba-ku, SENDAI 980-8577 Phone: +81-22-717-7800



- General Affairs Department 12
- Human Resource Department / Research Cooperation Department / Finance Department / Office for Financial Planning of Campus Relocation 13
- Facilities Department / Office for Campus Relocation 15
- Public Relations Department 11
- Information Department 9
- International Affairs Department 14
- Institute for Materials Research 3
 - Advanced Research Center for Metallic Glasses 4
 - High Field Laboratory for Superconducting Materials 7
 - International Frontier Center for Advanced Materials 2
- Institute of Fluid Science 17
 - Transdisciplinary Fluid Integration Research Center 17
 - Interdisciplinary Shock Wave Research Laboratory 22
 - Environmental Fluid Facility Building 32
- Research Institute of Electrical Communication 28, 30
 - Laboratory for Brainware Systems 29
 - Laboratory for Nanoelectronics and Spintronics 26
 - Research Center for 21st Century Information Technology 33
- Institute of Multidisciplinary Research for Advanced Materials, Research Center for Sustainable Materials Engineering 8, 10, 27
 - Hybrid Nano-Materials Research Center / Materials Science & Technology Research Center for Industrial Creation 8, 9
 - Research Center for Soft X-Ray Microscopy 10
 - Laboratories for Advanced Materials Research 25
- Graduate School of Life Sciences 23, 24, 30
- Law School 16
- School of Public Policy 16
- Center for Low Temperature Science 5
- University Archives 18

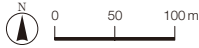
- High-Voltage Electron Microscope Laboratory 19
- Archaeological Research Office on the Campus 21
- Katahira Hall 1
- Welfare Facilities 6
- Gymnasium 31
- Repository for Archaeological Materials 20

Campus Map

2 KAWAUCHI CAMPUS

● Land: 829,736㎡ ● Buildings: 120,005㎡

Kawauchi-Kita Campus: 41 Kawauchi, Aoba-ku, SENDAI 980-8576
 Kawauchi-Minami Campus: 27-1 Kawauchi, Aoba-ku, SENDAI 980-8576
 Phone: +81-22-717-7800

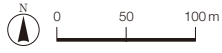


- | | |
|--|--|
| Graduate School of Arts and Letters 16, 18 | Admission Center / Education and Student Support Department, Admission Division 13 |
| Graduate School of Economics and Management 23, 24 | Multimedia Education and Research Complex 3△ |
| Seminar Rooms 25 | Kawakita Joint Building 7※ |
| Graduate School of Law 17, 18 | Graduate School of Arts and Letters / Graduate School of Law 18 |
| Graduate School of Educational Informatics,
Education Division / Research Division 16 | New Humanities Building (Graduate School of Education) 19 |
| Graduate School of International Cultural Studies 11 | Humanities Building 23 |
| University Library (Main Library) 14▲ | Lecture Rooms 4 |
| Botanical Gardens (Garden Hall) 26 | Lecture Hall 21 |
| Memorial Herbarium 22 | Lecture Rooms 20 |
| Health Administration Center / University Counseling
Center / Counseling Room for Harassment 10 | Laboratories for Students 2 |
| Education and Student Support Department
(Administration Building), Center for Career Support 12 | Student Hall 6 |
| Center for International Exchange / International Affairs
Department, Student Exchange Division 1 | Gymnasium 5 |
| Center for Northeast Asian Studies 7 | Recreational Building 9 |
| Center for the Advancement of Higher Education 3, 7 | Welfare Facilities 8 |
| | Welfare Facilities 27 |
| | Memorial Auditorium /
Matsushita Memorial Hall 15 |

※ includes Graduate School of International Cultural Studies, Center for Northeast Asian Studies, and Center for the Advancement of Higher Education
 △ includes Center for the Advancement of Higher Education and Graduate School of International Cultural Studies
 ▲ includes Information Synergy Center, Academic Information Branch



3 AOBAYAMA CAMPUS



●Land: 785,049㎡ ●Buildings: 290,835㎡

Graduate School / School of Engineering,
Graduate School of Environmental Studies: 6-6, Aoba, Aramaki, Aoba-ku, SENDAI 980-8579
Other than those above: 6-3, Aoba, Aramaki, Aoba-ku, SENDAI 980-8578

Phone: +81-22-717-7800



Faculty / Graduate School of Science (Administration Office) ⑫

- Mathematics ⑦
- Physics ②
- Chemistry ⑧
- Earth Science ⑪
- Biology ⑩
- Physics and Natural Science ⑲

- Research and Analytical Center for Giant Molecules ⑨
- Center for Atmospheric and Oceanic Studies ⑰
- Planetary Plasma and Atmospheric Research Center ⑰
- Research Center for Prediction of Earthquakes and Volcanic Eruptions ④⑦
- Research Center for Neutrino Science ⑰
- Lecture Hall ③
- Kawai Hall ④
- Museum of Natural History / University Museum ⑱

Faculty / Graduate School of Pharmaceutical Sciences ⑥

- Pharmaceutical Research Laboratories Building ⑤
- Experimental Station for Medicinal Plant Studies (Administration Building) ⑬

Graduate School / School of Engineering (Administration Building) ④①

- Mechanical Systems and Design / Nanomechanics / Aerospace Engineering / Bioengineering and Robotics ⑳
- Quantum Science and Energy Engineering ④⑤
- Electrical and Communication Engineering / Electronic Engineering / Applied Physics ②⑤, ②⑧
- Applied Chemistry / Chemical Engineering / Biomolecular Engineering ②⑨
- Metallurgy / Materials Science / Materials Processing ④④
- Civil Engineering / Architecture and Building Science ③⑧
- Management of Science and Technology ③⑨
- Innovation Plaza ③⑩
- Laboratory of Architecture and Building Science ②①
- Disaster Control Research Center ③⑨
- Fracture and Reliability Research Institute ③⑨
- Research Center of Supercritical Fluid Technology ②⑦
- Engineering Laboratory Complex ③⑨
- Graduate School / School of Engineering (Lecture Rooms) ④③
- Micro/Nano-Machining Research and Education Center ③④

Graduate School of Information Sciences ②⑥

Graduate School of Life Sciences ⑧, ⑩, ⑰

Graduate School of Environmental Studies (Research Building) ③⑤

Kita-Aobayama Library ⑰

Engineering Library ③①

Cyclotron and Radioisotope Center ②⑩

Center for Low Temperature Science ①

Fluctuation Free Facility (FFF) for New Information ③⑥

New Industry Creation Hatchery Center / Office of Cooperative Research and Development ③⑦

Hatchery Square ④⑩

Center for Interdisciplinary Research ②②

Institute for International Advanced Research and Education ②②

Environment Conservation Center ④⑥

Information Synergy Organization ②④

Gymnasium ②③

Welfare Facilities ③②

Welfare Facilities ⑰

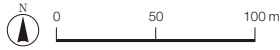
Welfare Facilities ④⑧

Aoba Memorial Hall ④②

Campus Map

4 SEIRYO CAMPUS

● Land: 180,106㎡ ● Buildings: 270,053㎡



University Hospital: 1-1, Seiryō-machi, Aoba-ku, SENDAI 980-8574
 School / Graduate School of Medicine: 2-1, Seiryō-machi, Aoba-ku, SENDAI 980-8575
 School / Graduate School of Dentistry: 4-1, Seiryō-machi, Aoba-ku, SENDAI 980-8575
 Phone: +81-22-717-7000



School of Medicine 22

- Lecture Rooms 27
- Clinical Research Building 28
- Clinical Research Building 29
- Laboratories Building 23
- Laboratories Building 21
- Course of Health Sciences / College of Medical Sciences 10
- Frontier Research Building 12
- Biomedical Research Building 20
- Prion Research Building 11
- Institute of Animal Experimentation 14
- Institute for Experimental Animals 7
- Lecture Rooms 24
- Lecture Rooms 30

Radioisotope Center 15

Graduate School of Dentistry (Clinical Research Building) 9

- Dental Hospital 9
- Laboratories 8
- Lecture Rooms 4
- Anatomical Specimen Room 5

University Hospital 32

- Clinics for Outpatients 31
- Operation & Medical Check Building 25
- West Ward 16
- New West Ward 17
- South Ward 26
- New South Ward 19
- New East Ward 18
- Institute of Development, Aging and Cancer (Research Building) 2*

- Seiryō Total Research Project Building 3*
- Medical Library 33
- Recreational Building 1
- Gymnasium 6
- Seiryō Hall 13
- Gonryō Hall 34

* includes Graduate School of Life Sciences

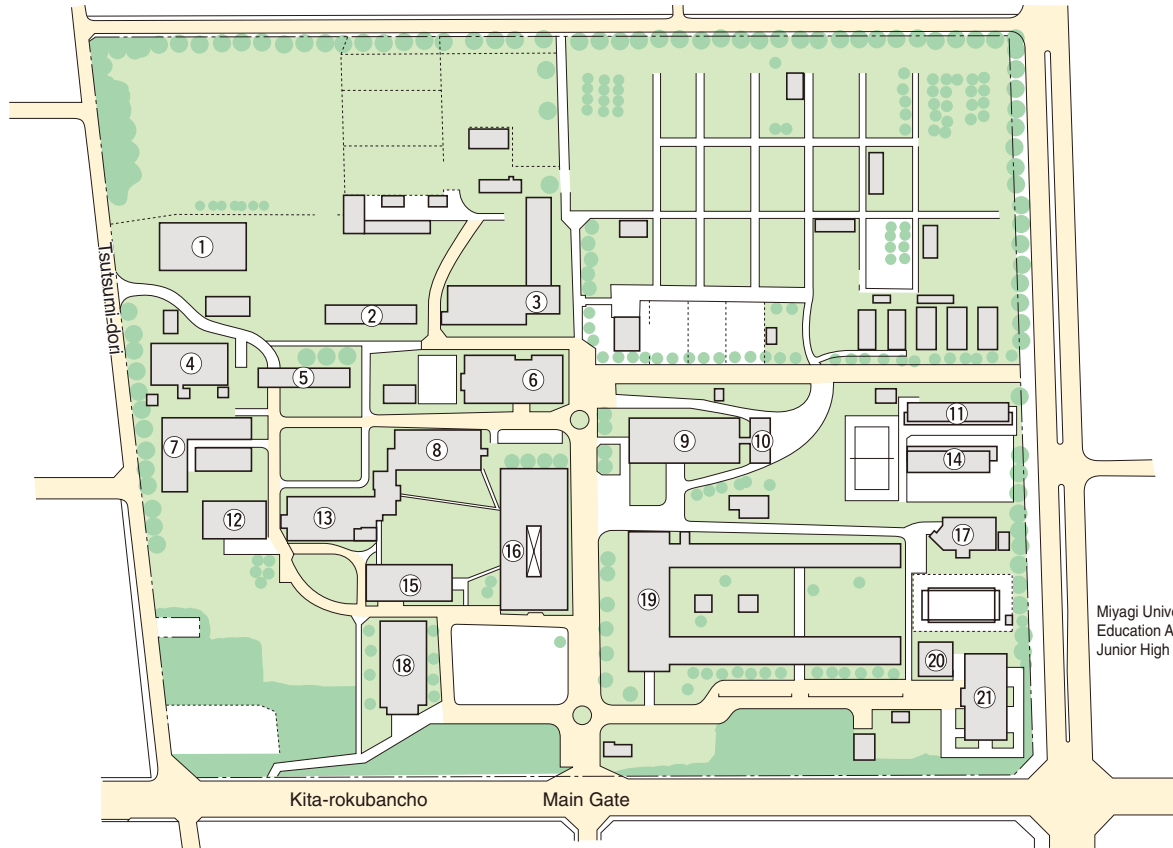
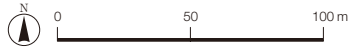


Campus Map

5 AMAMIYA CAMPUS

● Land: 92,746㎡ ● Buildings: 31,297㎡

1-1, Amamiya-machi, Tsutsumidori, Aoba-ku, SENDAI 981-8555 Phone: +81-22-717-8604



Graduate School of Agricultural Science
(Research House named "Honkan") ⑱ *

Administration Office ⑮

Research House named
"Daiichi-kenkyutou" ⑬

Research House named
"Daini-kenkyutou" ⑧ *

Research House named
"Kenkyu Jikkentou 1" ⑭

Research House named
"Kenkyu Jikkentou 2" ⑪

Research House named
"Kenkyu Jikkentou 3" ⑤ *

Research House named
"Kenkyu Jikkentou 4" ②

Building for Animal Breeding
and Experiments ③

Food Processing Laboratory ④

Laboratory and Breeding House of
Aquatic Life ⑦

Laboratory of Plant
Environmental Responses ⑳

Lecture House ⑯

Lecture Hall ①

Radioisotope Laboratory ⑰

Power Center ⑫

Gymnasium ⑱

Institute of Development, Aging and Cancer,
Center for Advanced Genome Research ㉑

Agricultural Library ⑥

Welfare Facilities ⑨

Student Lounge ⑩



* includes Graduate School of Life Sciences



Tohoku University Fact Book 2006

Published by
International Affairs Department
Tohoku University

1-1 Katahira 2-chome, Aoba-ku, Sendai 980-8577 JAPAN
Phone : +81-22-217-5019 Fax : +81-22-217-4846
E-mail : kokusai@bureau.tohoku.ac.jp

<http://www.tohoku.ac.jp/>