



Increase of Fixed Assets

Our Fixed Assets increased as a result of the repairs to buildings and research facilities, and preparation for the Tohoku Medical Megabank Organization.

31.9 billion Yen
(increase from FY2012)

Increase in Research Budget

Our research budget increased as a result of the recovery projects which have commenced, such as the Project for the Reconstruction of Community Health Care.

7.9 billion Yen
(increase from FY2012)

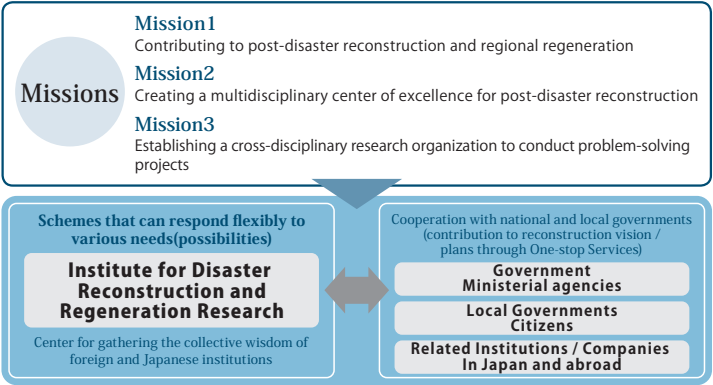
Increase of Grants

Grants increased as a result of the commencement of research activities such as eight projects at the Institute for Disaster Reconstruction and Regeneration Research.

6.5 billion Yen
(increase from FY2012)

Institute for Disaster Reconstruction and Regeneration Research

As an university located at the center of the disaster-affected area, Tohoku University will continue to play a leading role in reconstructing Tohoku and in revitalizing Japan.

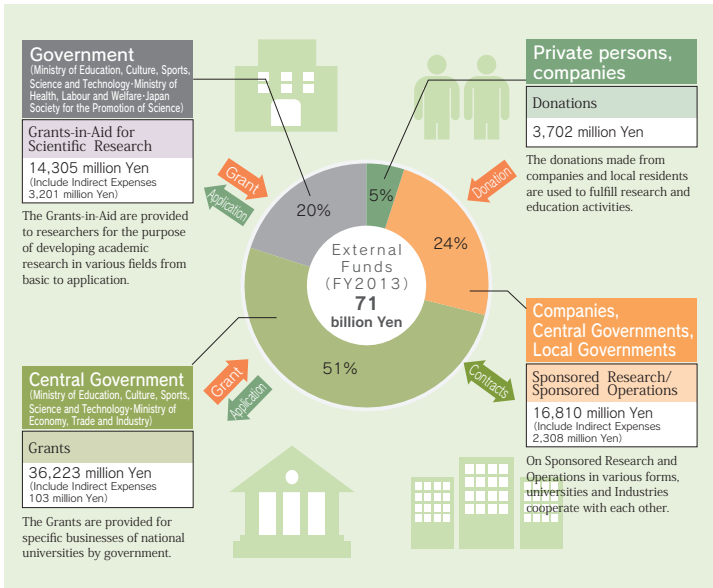


Cash Flow Statement(summary)

(In millions of Yen)			
	Items	FY 2013	FY 2012
This section presents cash flows through business activities of education and research, etc.	I Cash flows from operating activities	36,787	22,930
	Payments for raw materials, goods and service		
	Payments for personnel expenses		
	Proceeds from grants for operations		
	Proceeds from student fees		
This section presents cash flows through "the investment for establishment of management foundation".	II Cash flows from investing activities	▲8,878	▲4,326
	Payments for time deposits		
	Purchase of property, plant and equipment and intangible assets		
	Proceeds from grants for facilities		
This section presents cash flows about borrowings,etc.	III Cash flows from financing activities	▲7,663	3,771
	Repayment of long-term borrowings		
	Repayment of finance lease liabilities		
	Proceeds from issue of share capital		
	IV Effect of exchange rate change on cash	—	—
	V Net increase in cash	20,246	22,374
	VI Cash at beginning of period	50,170	27,795
	VII Cash at end of period	70,416	50,170

The **Cash flow statements** is a cash basis report and presents each cash inflow and cash outflow of "operating, investing, and financing activities".

■ External Funds



Balance Sheet (summary)

(In millions of Yen)			
	Items	FY 2013	FY 2012
Assets	(Non-current assets)		
	Land	133,780	134,561
	Buildings	129,156	117,834
	Machinery and equipment	59,133	52,810
	Books/Work of art	25,285	25,399
	Construction in progress	30,947	17,542
	Other	3,381	1,559
	(Current assets)		
	Cash and deposits	70,416	50,170
	Accounts receivable	15,845	12,725
	(Accounts receivable - student fees)	160	167)
	(Accounts receivable - university hospital)	6,773	6,470)
	(Other accounts receivable	8,911	6,086)
	Securities	3,300	11,160
	Other current assets	416	734
	Total (Assets)	471,664	424,497
Liabilities	(Non-current liabilities)		
	Deferred inflow of assets	119,226	90,411
	Long-term borrowings	36,634	39,917
	Other	5,219	7,488
	(Current liabilities)		
	Deferred inflow of grants for operations	12,353	11,922
	Deferred inflow of donations/Deferred inflow of Sponsored Research	18,425	17,615
	Current portion of long-term borrowings	3,773	3,752
	Accounts payable	47,121	29,757
	Other	3,980	3,507
	Total (Liabilities)	246,734	204,333
	Net assets		
	Capital	192,720	192,720
	Capital surplus	16,642	14,809
	Earned surplus	15,567	12,634
	(Reserve funds carried forward from previous mid-term plan period	5,488	5,488)
	(Reserve for specific purposes	2,086	2,108)
	(Reserve	5,036	2,761)
	(Unappropriated retained earnings	2,955	2,275)
	Total (Net assets)	224,930	220,164
	Total (Liabilities, Net assets)	471,664	424,497

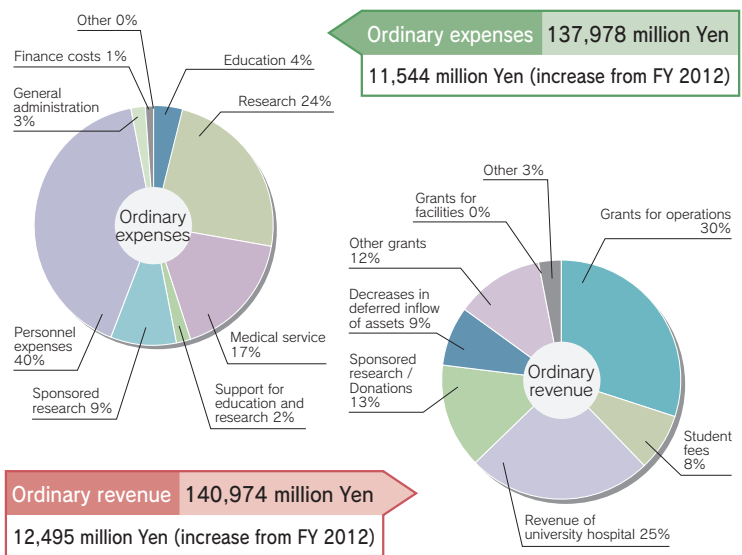
Balance sheet presents information about the financial position on the reporting date by presenting all assets, liabilities and net assets.



Income Statement (summary)

			(In millions of Yen)		
Items	FY 2013	FY 2012	Items	FY 2013	FY 2012
Ordinary expenses			Ordinary revenue		
Education	5,479	4,942	Grants for operations	41,970	42,603
Research	32,627	24,694	Student fees	10,834	10,911
Medical service	23,325	22,147	Revenue of university hospital	35,335	34,236
Support for education and research	3,081	3,412	Sponsored research / Donations	19,009	16,298
Sponsored research	12,927	10,917	Decreases in deferred inflow of assets	12,435	9,750
Personnel expenses	55,909	56,053	Other grants	16,606	10,079
General administration	3,799	3,289	Grants for facilities	532	271
Finance costs	818	954	Other	4,250	4,328
Other	9	22			
Ordinary expenses Total	137,978	126,434	Ordinary revenue Total	140,974	128,479
Extraordinary loss	1,718	7,610	Extraordinary profit	1,660	7,718
Income for the period	2,955	2,275	Reversal of reserve for specific purposes	17	122

Income statement presents information about the financial performance during a reporting period by presenting all revenue and expenses.



Operation Cost Statement (summary)

(In millions of Yen)			
	Items	FY 2013	FY 2012
This section presents the burden on citizens in income statement by deducting non-subsidy revenue.	I Operating expenses	69,985	68,119
	Expenses in income statement		
	Operating expenses		
	General and administrative expenses		
	(Deduction) Non-subsidy revenue, etc.		
This section presents the increase of burden on citizens that is not included in income statement.	II Depreciation expense not included in income statement	5,872	6,197
	III Increase of estimated bonuses not included in income statement	▲344	▲213
	IV Increase of estimated retirement benefit not included in income statement	▲540	▲1,804
This section presents opportunity costs that are favorable in comparison with the private sector when using the assets of government, etc.	V Opportunity cost	2,241	1,675
	Opportunity cost of transactions of decreased or free-of-charge usage fees of the central or local governments		
	Opportunity cost of contributions from the government of Japan		
	VI (Deduction) Amount paid to the national treasury	—	—
	VII Operation cost	78,294	73,974

Operation cost statement presents the burden on citizens to operate national universities. Item VII indicates the burden on citizens by our university.

Statement of Appropriation of Earned Surplus (draft)

(In millions of Yen)		
	FY 2013	FY 2012
I Unappropriated retained earnings		
Income for the period	2,955	2,275
II Appropriated amount		
Reserve	2,927	2,275
Reserve for specific purposes	28	—

This **statement** presents information about the appropriation of unappropriated retained earnings.

